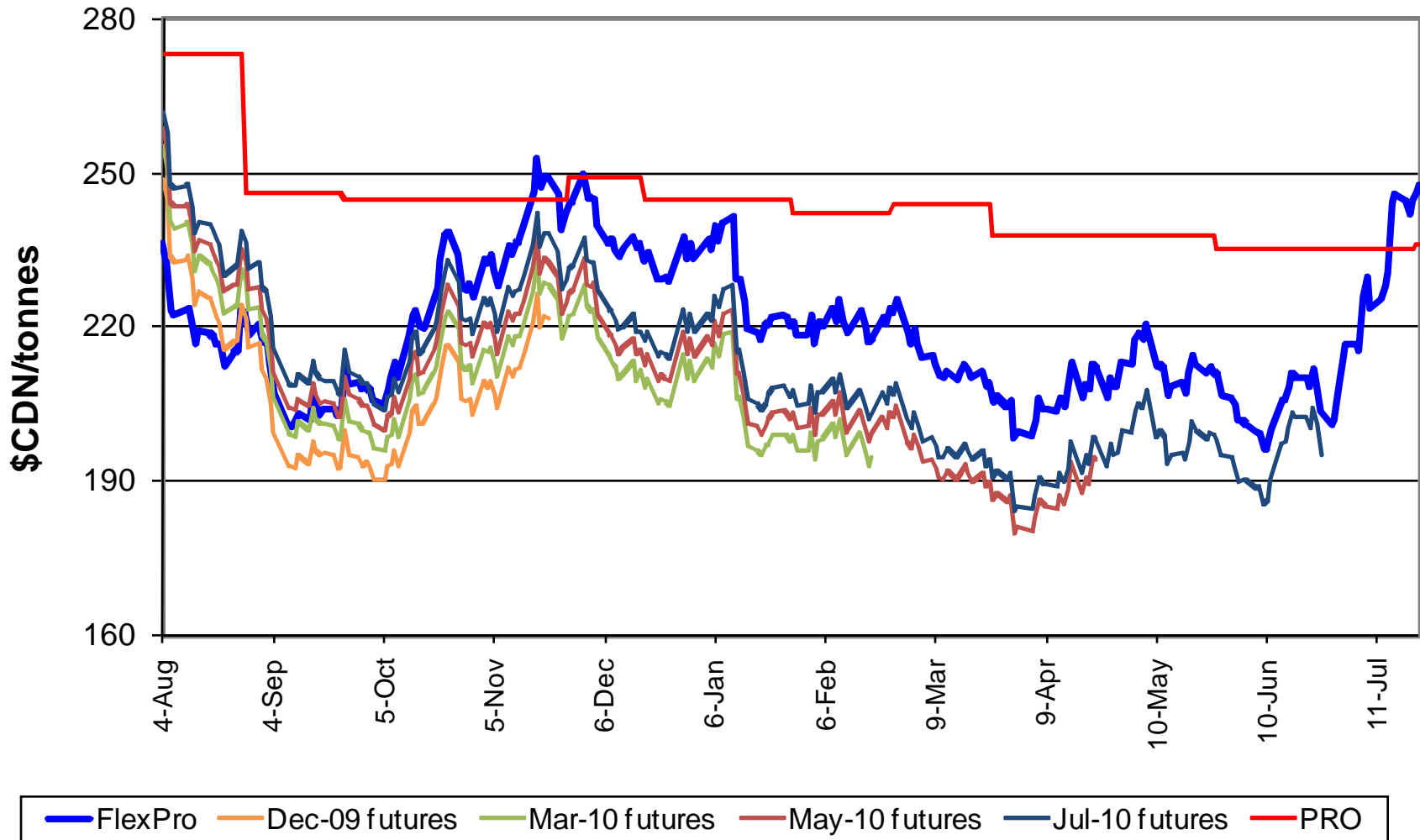
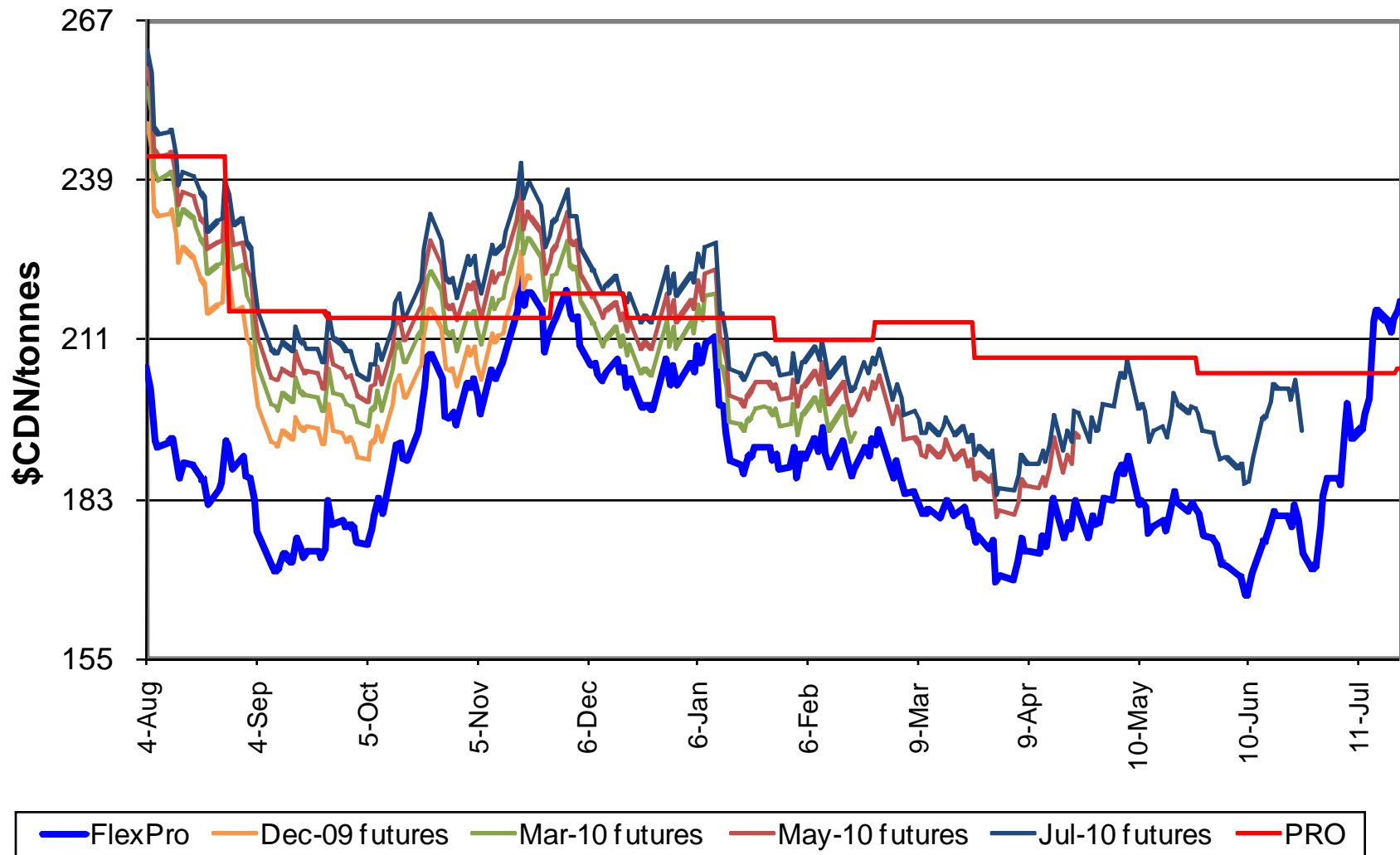


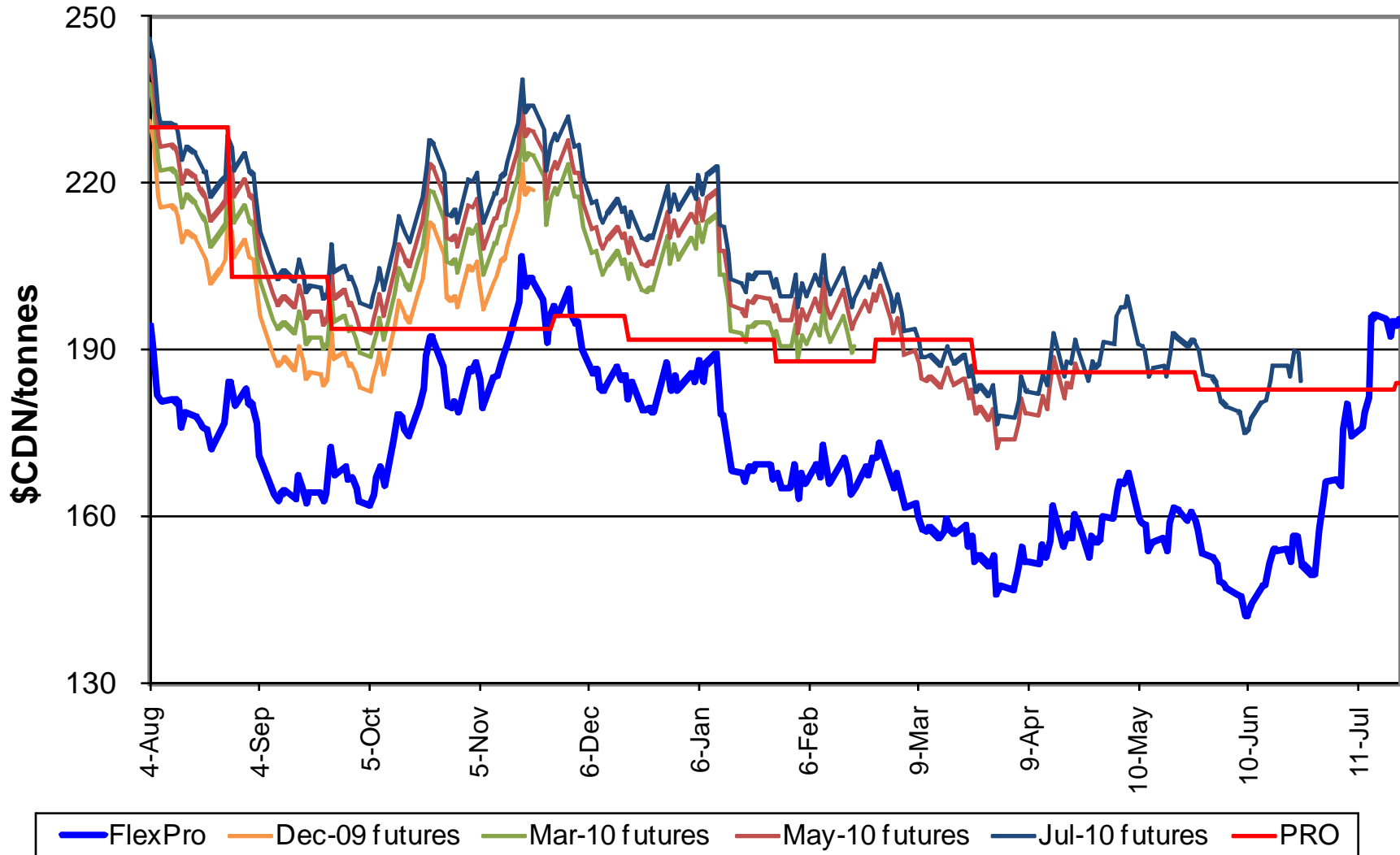
No. 1 CWRs/CWHWS 13.5% daily comparison of Minneapolis futures & FlexPro values for the 2009-10 crop year



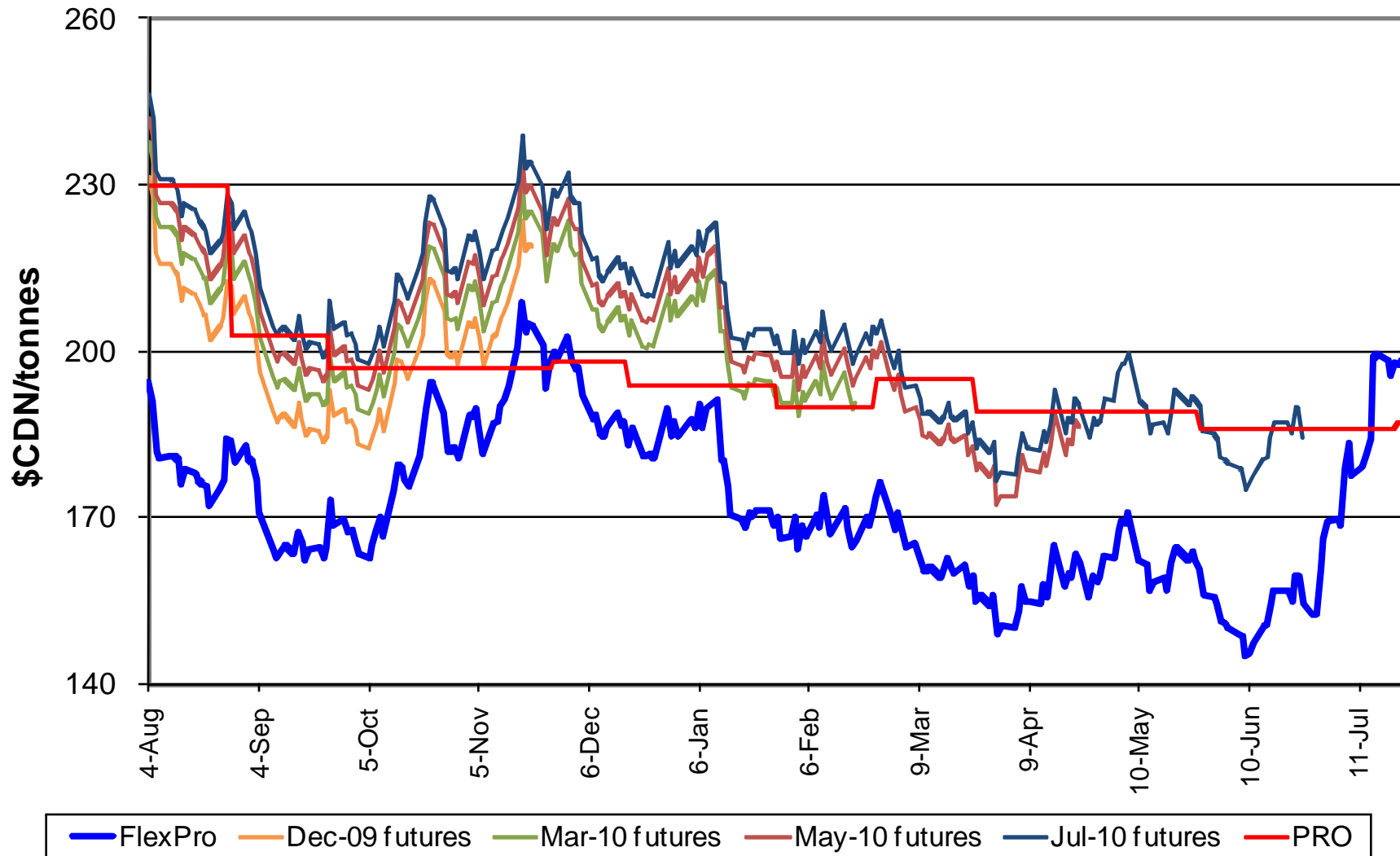
No. 1 CWES daily comparison of Minneapolis futures & FlexPro values for the 2009-10 crop year



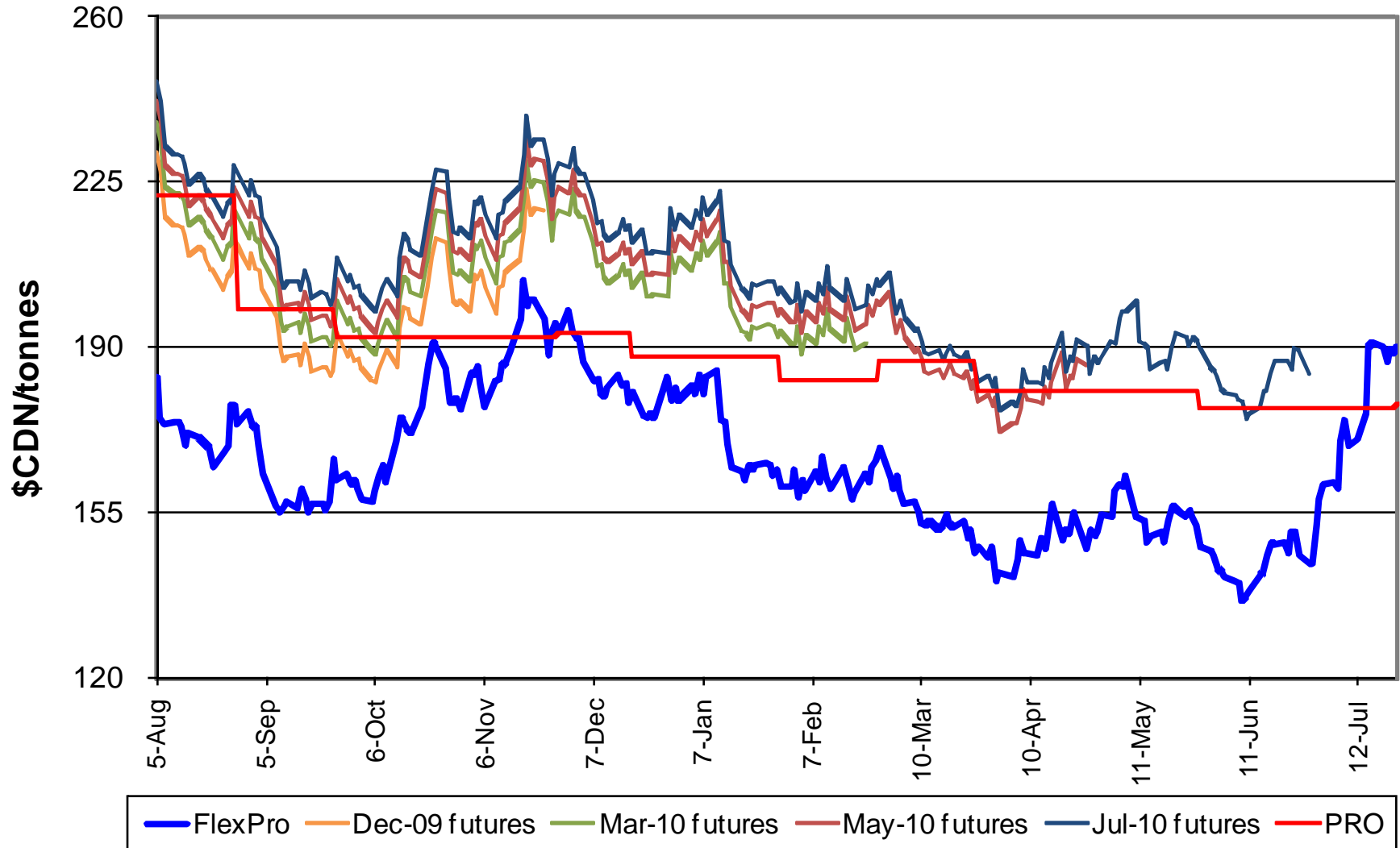
No. 1 CPSW daily comparison of Kansas City futures & FlexPro values for the 2009-10 crop year



No. 1 CPSR daily comparison of Kansas City futures & FlexPro values for the 2009-10 crop year



No. 1 CWRW daily comparison of Kansas City futures & FlexPro values for the 2009-10 crop year



No. 1 CWSWS daily comparison of Chicago futures & FlexPro values for the 2009-10 crop year

