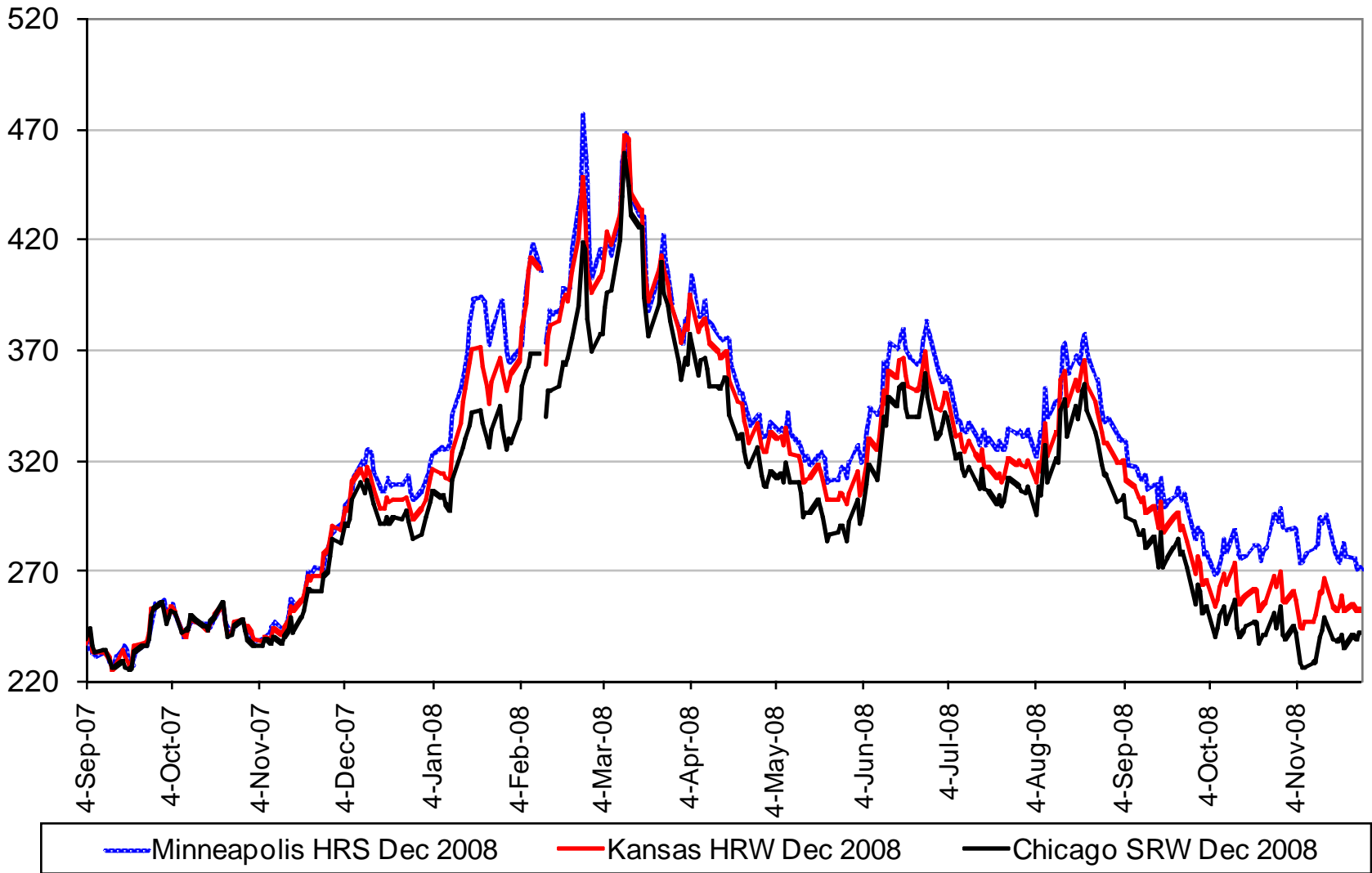


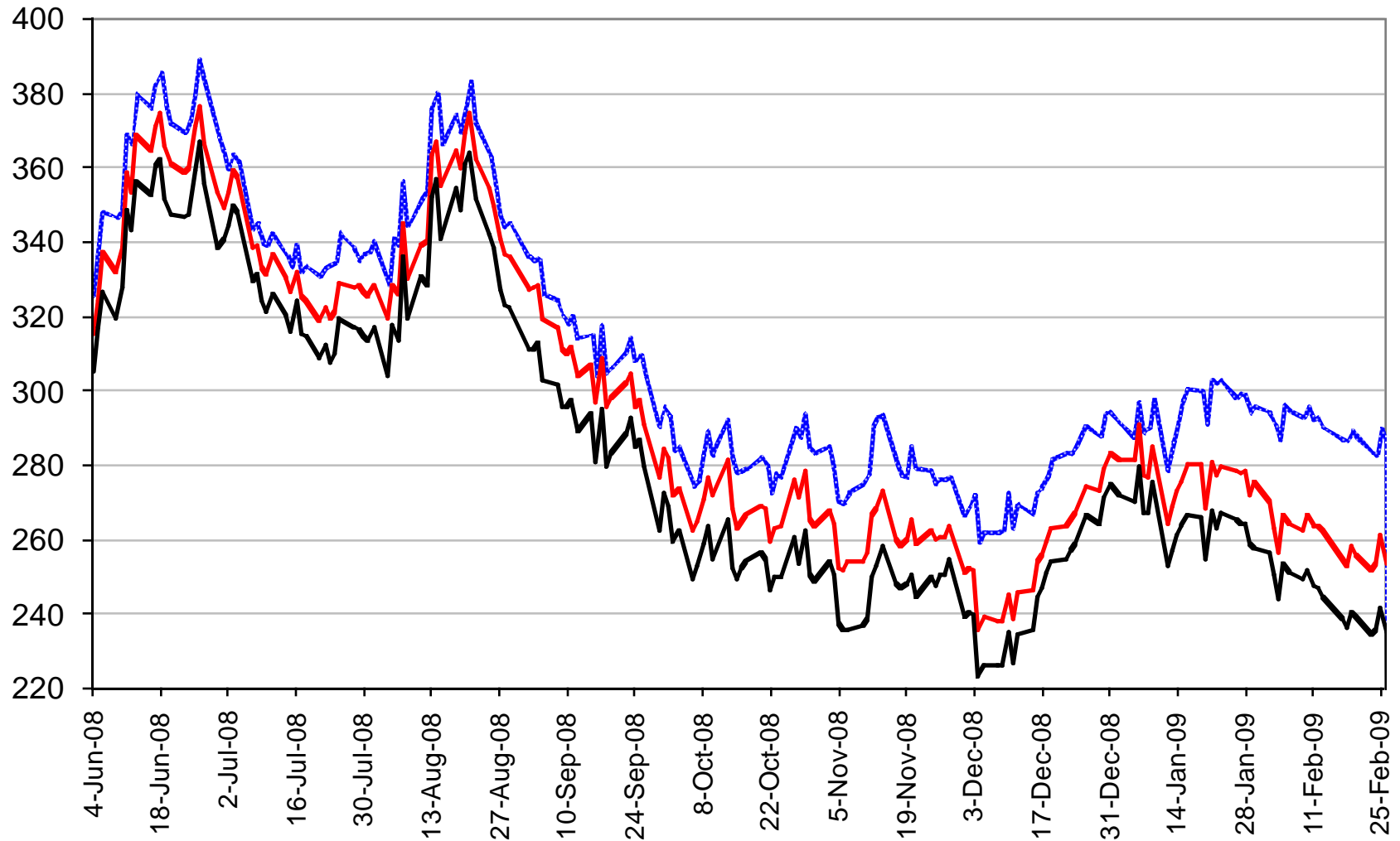
December 2008 Wheat Futures

\$Cdn/tonne



March 2009 Wheat Futures

\$Cdn/tonne



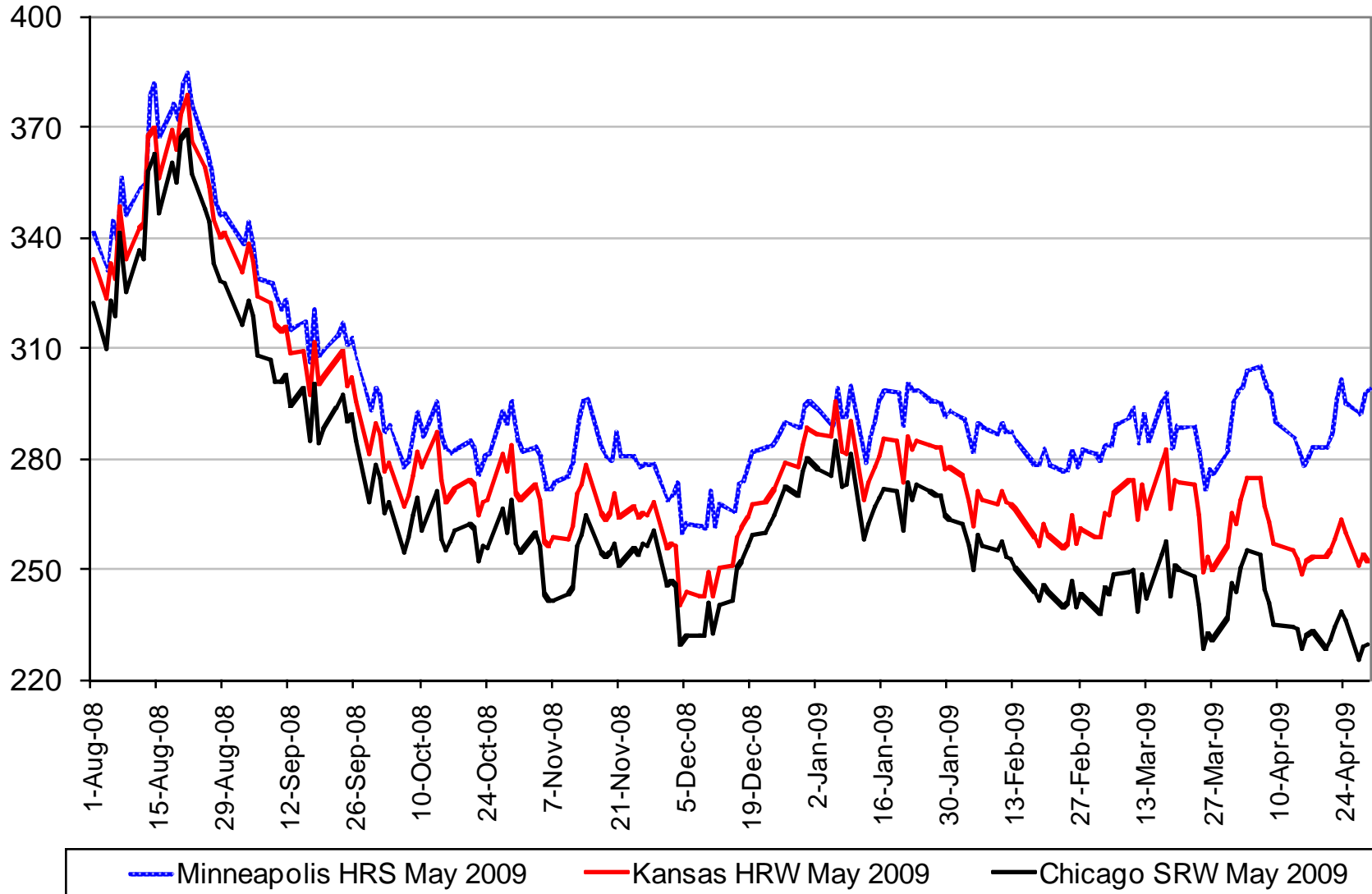
—•— Minneapolis HRS March 2009

— Kansas HRW March 2009

— Chicago SRW March 2009

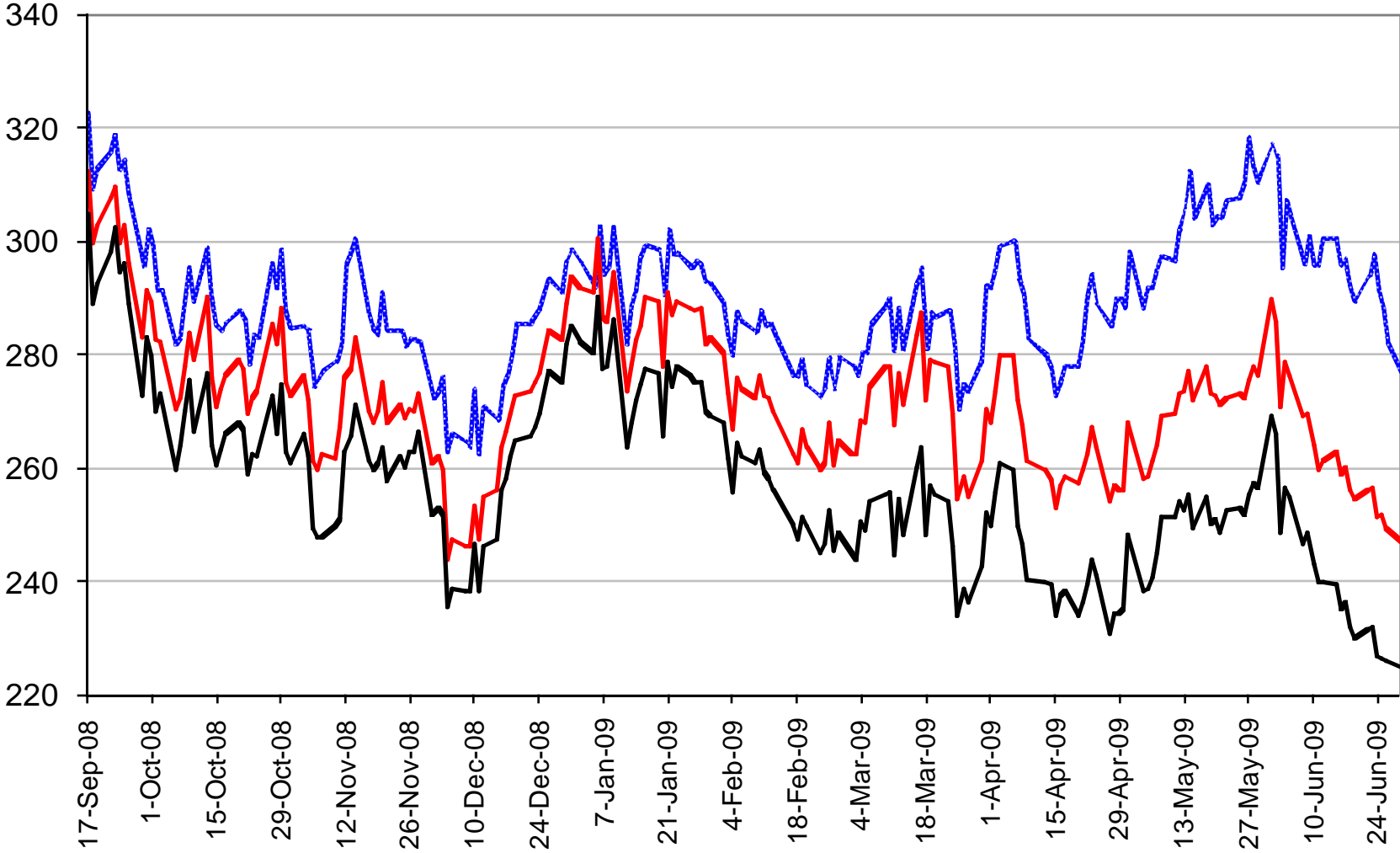
May 2009 Wheat Futures

\$Cdn/tonne



July 2009 Wheat Futures

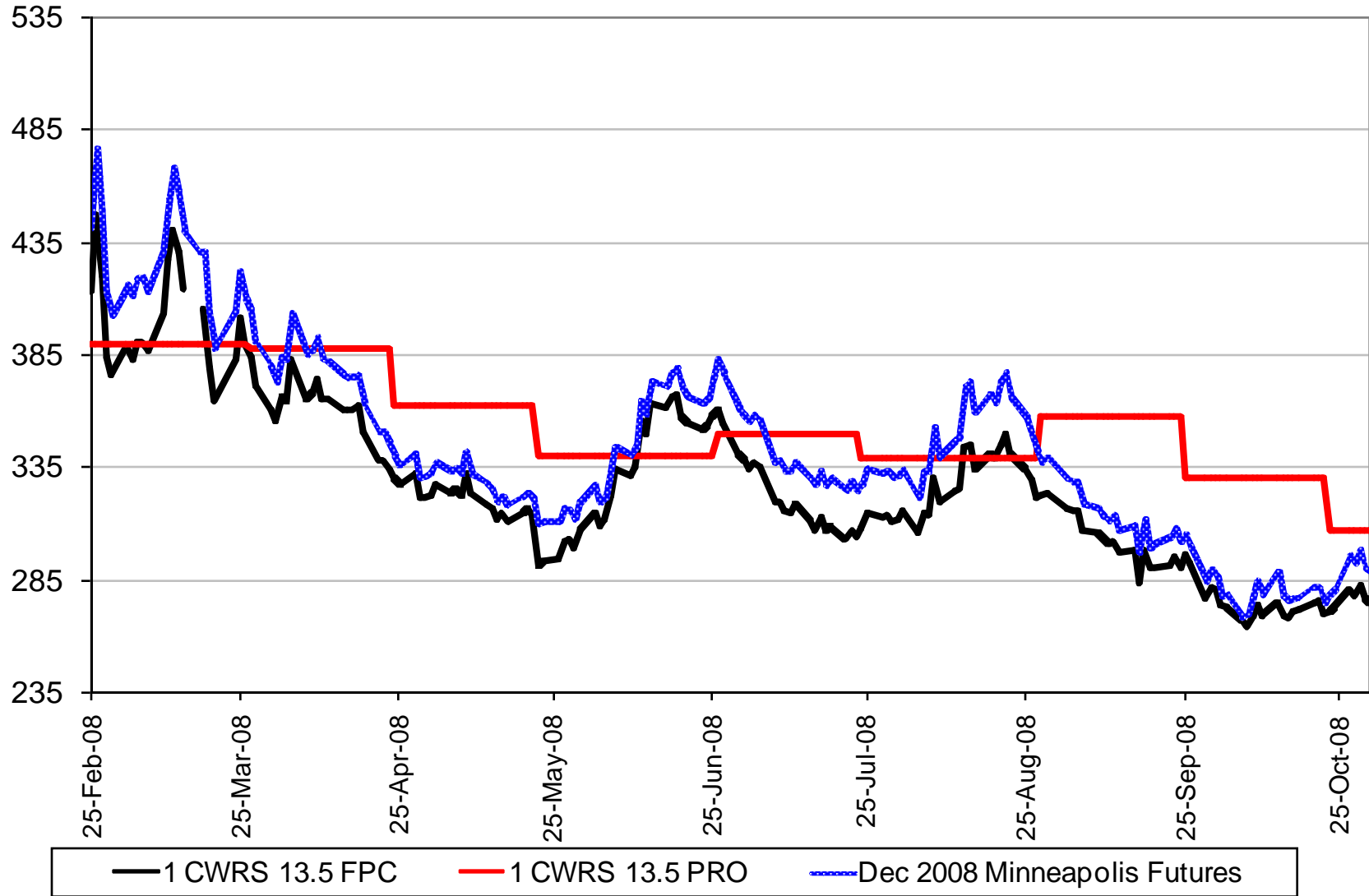
\$Cdn/tonne



— Minneapolis HRS July 2009 — Kansas HRW July 2009 — Chicago SRW July 2009

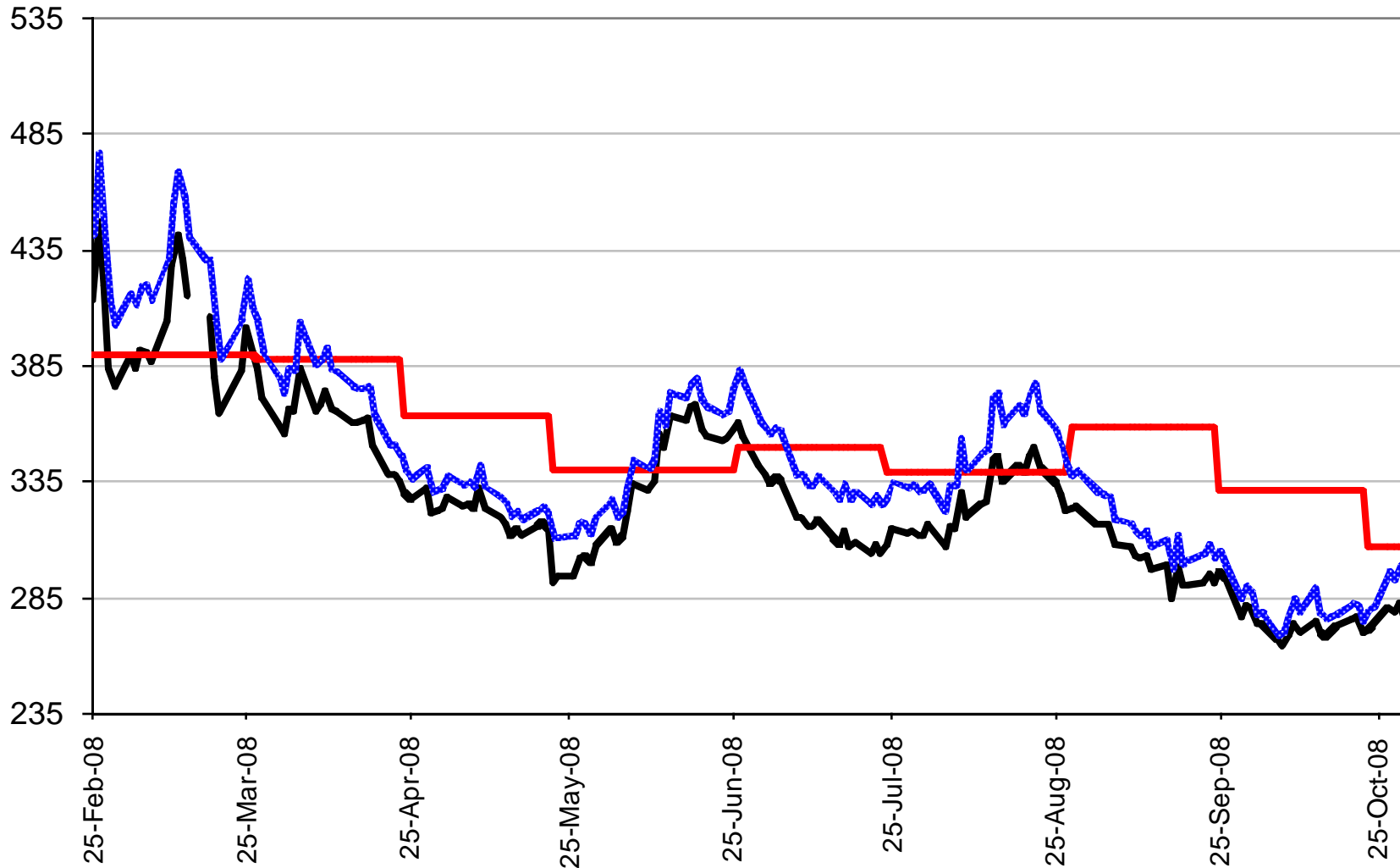
2008-09 No.1 CWRS 13.5 Fixed Price

\$Cdn/tonne



\$Cdn/tonne

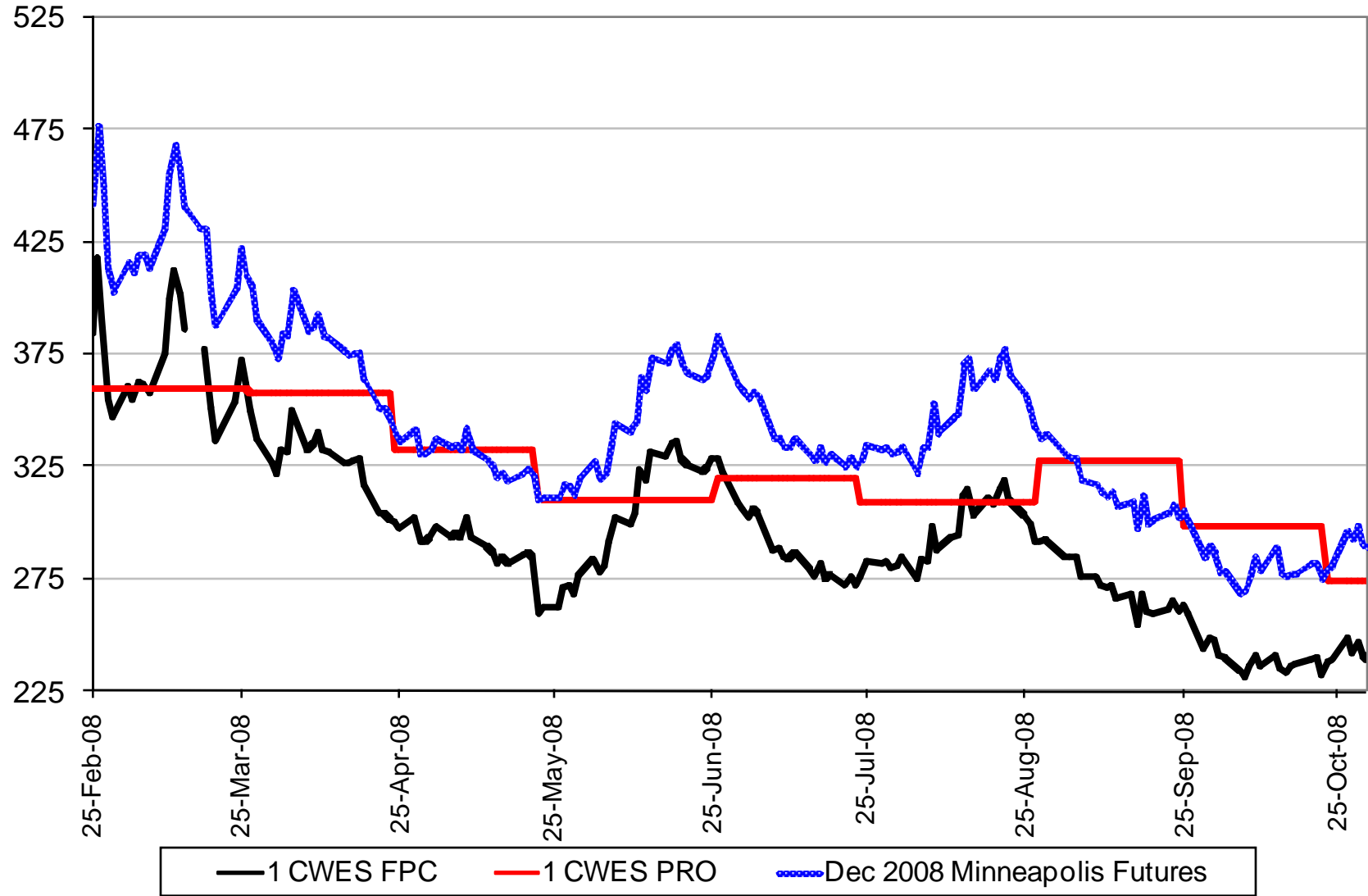
2008-09 No.1 CWHWS 13.5 Fixed Price



— 1 CWHWS 13.5 FPC — 1 CWHWS 13.5 PRO Dec 2008 Minneapolis Futures

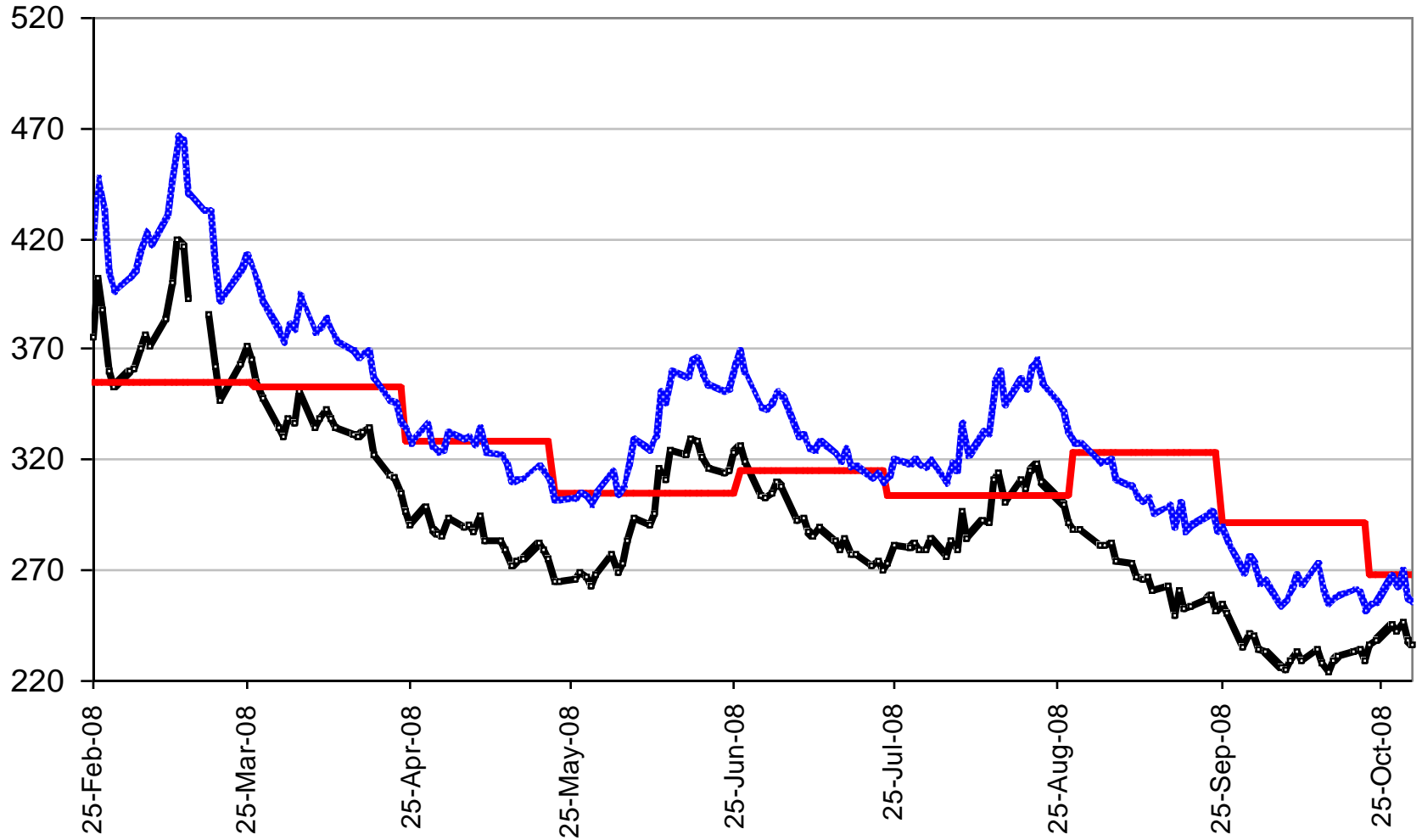
2008-09 No.1 CWES Fixed Price

\$Cdn/tonne



2008-09 No. 1 CPSR Fixed Price

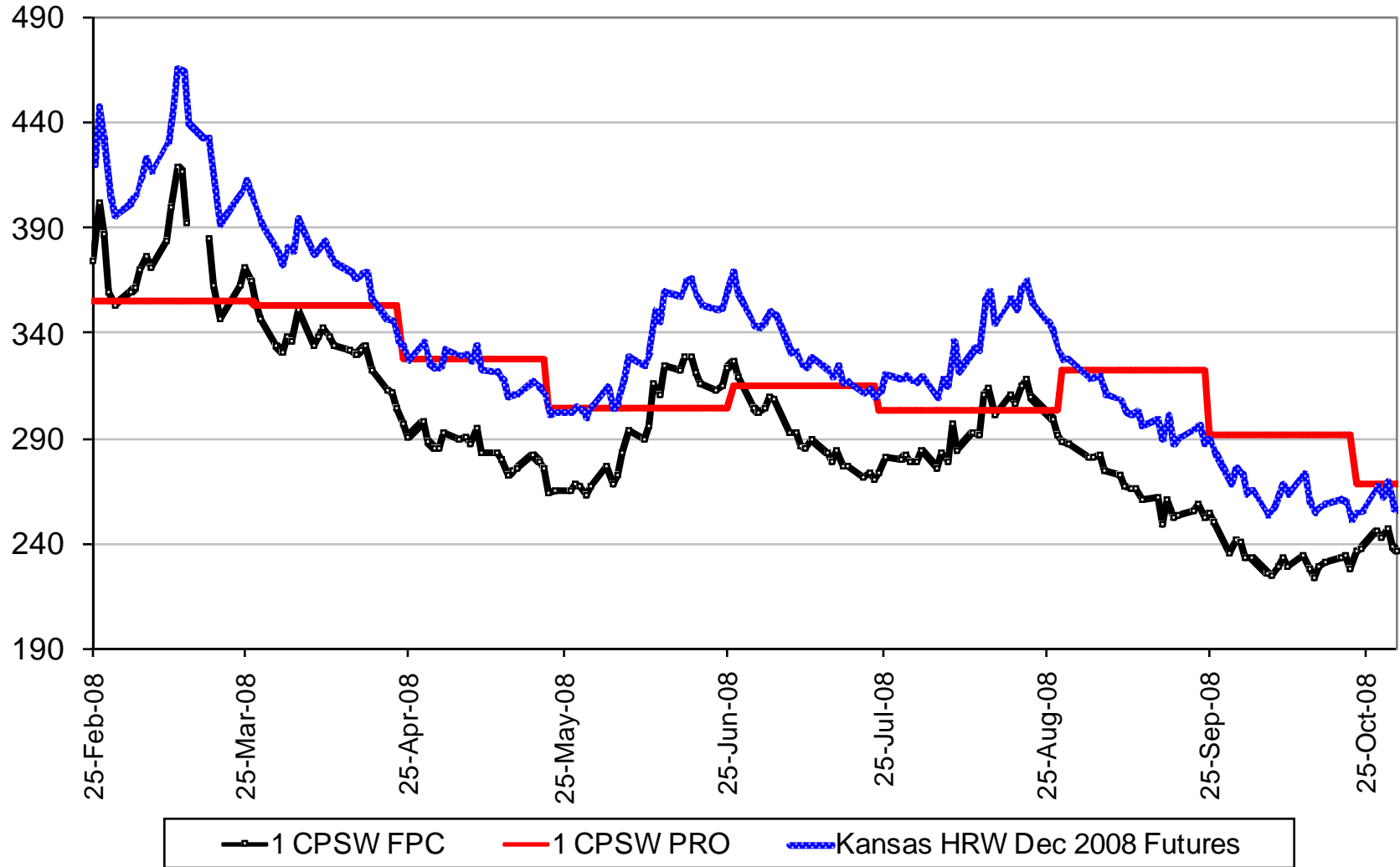
\$Cdn/tonne



— 1 CPSR FPC — 1 CPSR PRO — Kansas HRW Dec 2008 Futures

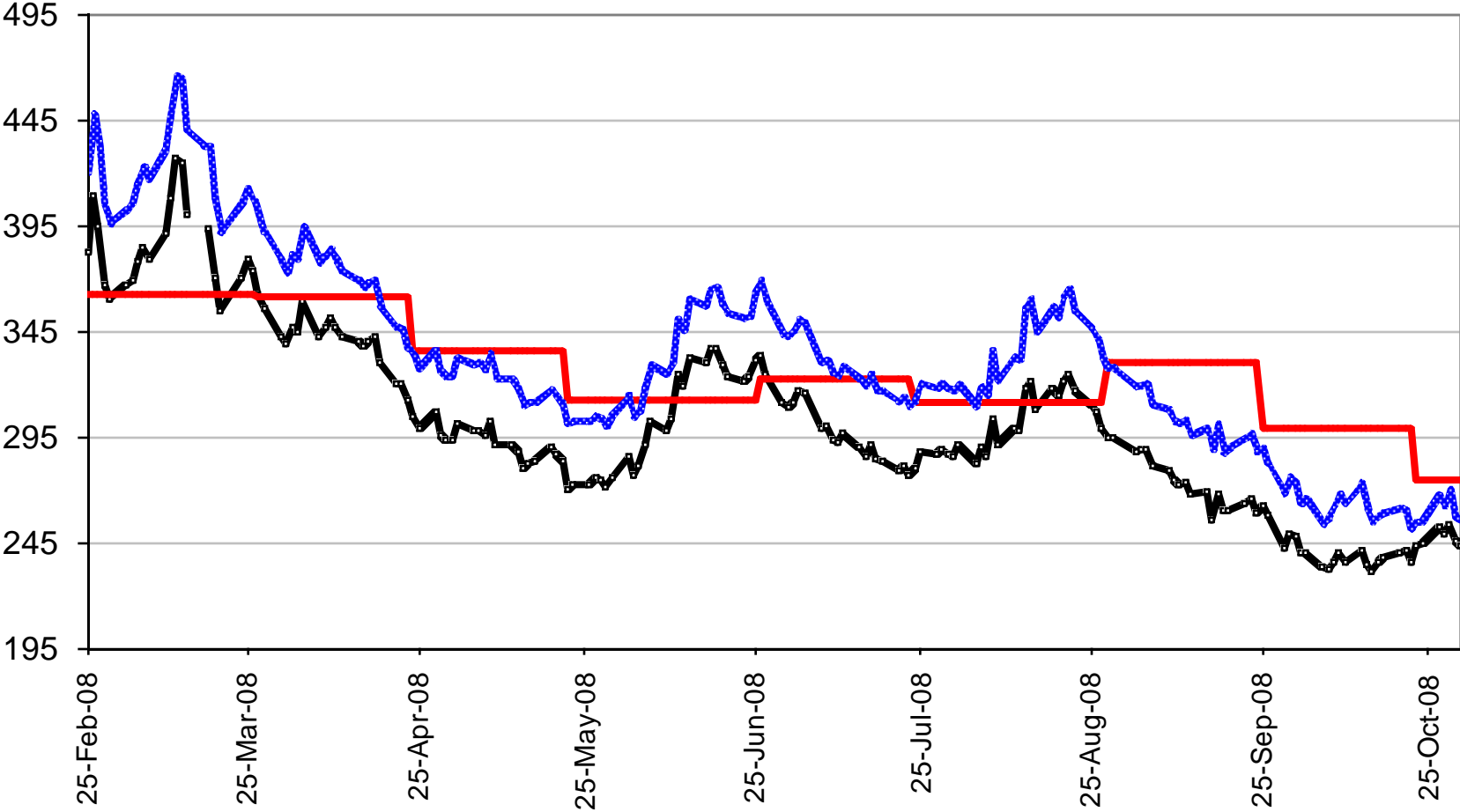
2008-09 No. 1 CPSW Fixed Price

\$Cdn/tonne



2008-09 No. 1 CWRW Select 11.5 Fixed Price

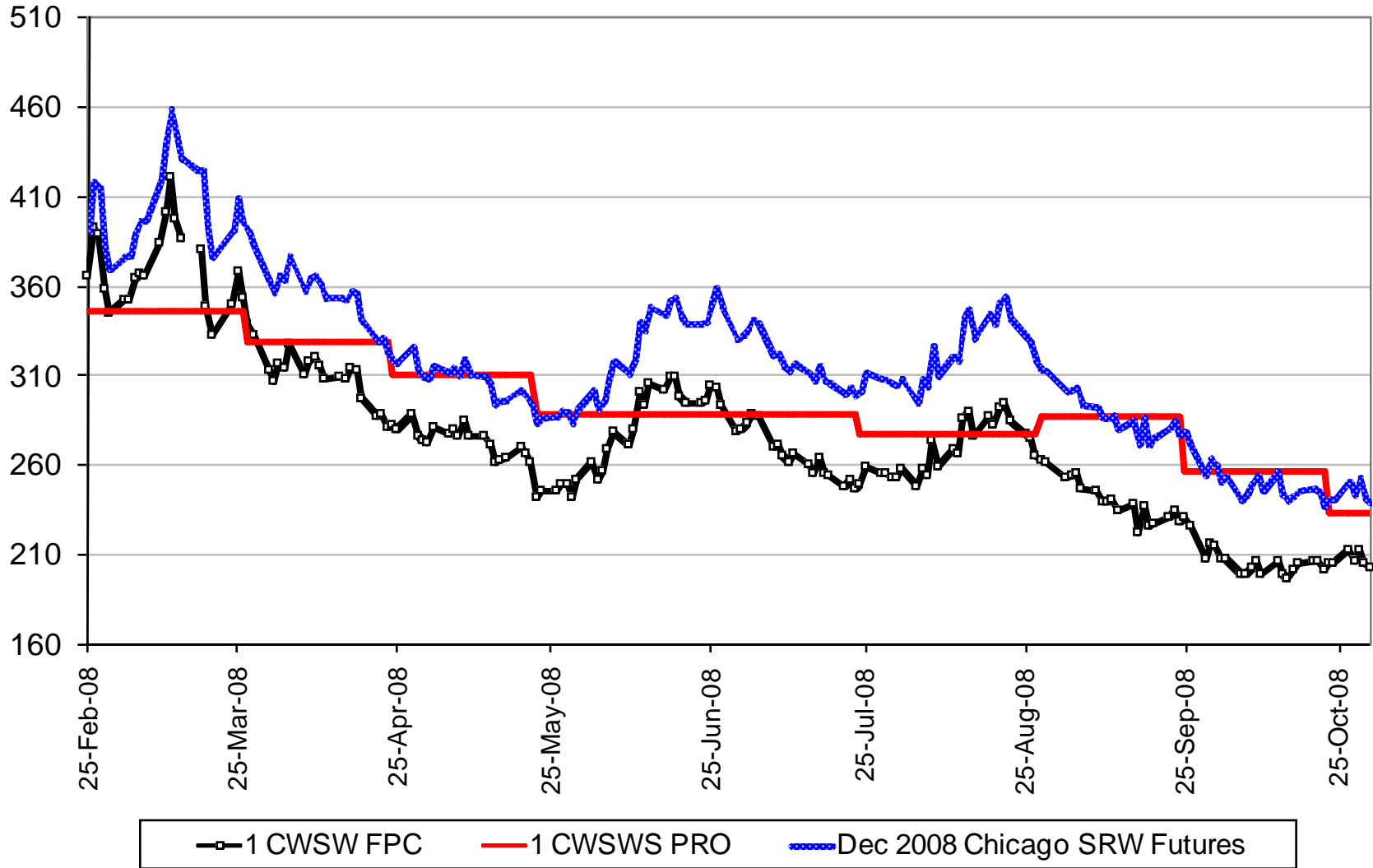
\$Cdn/tonne



— 1 CWRW Select 11.5 FPC — 1 CWRW Select 11.5 PRO - - - - Dec 2008 Kansas HRW Futures

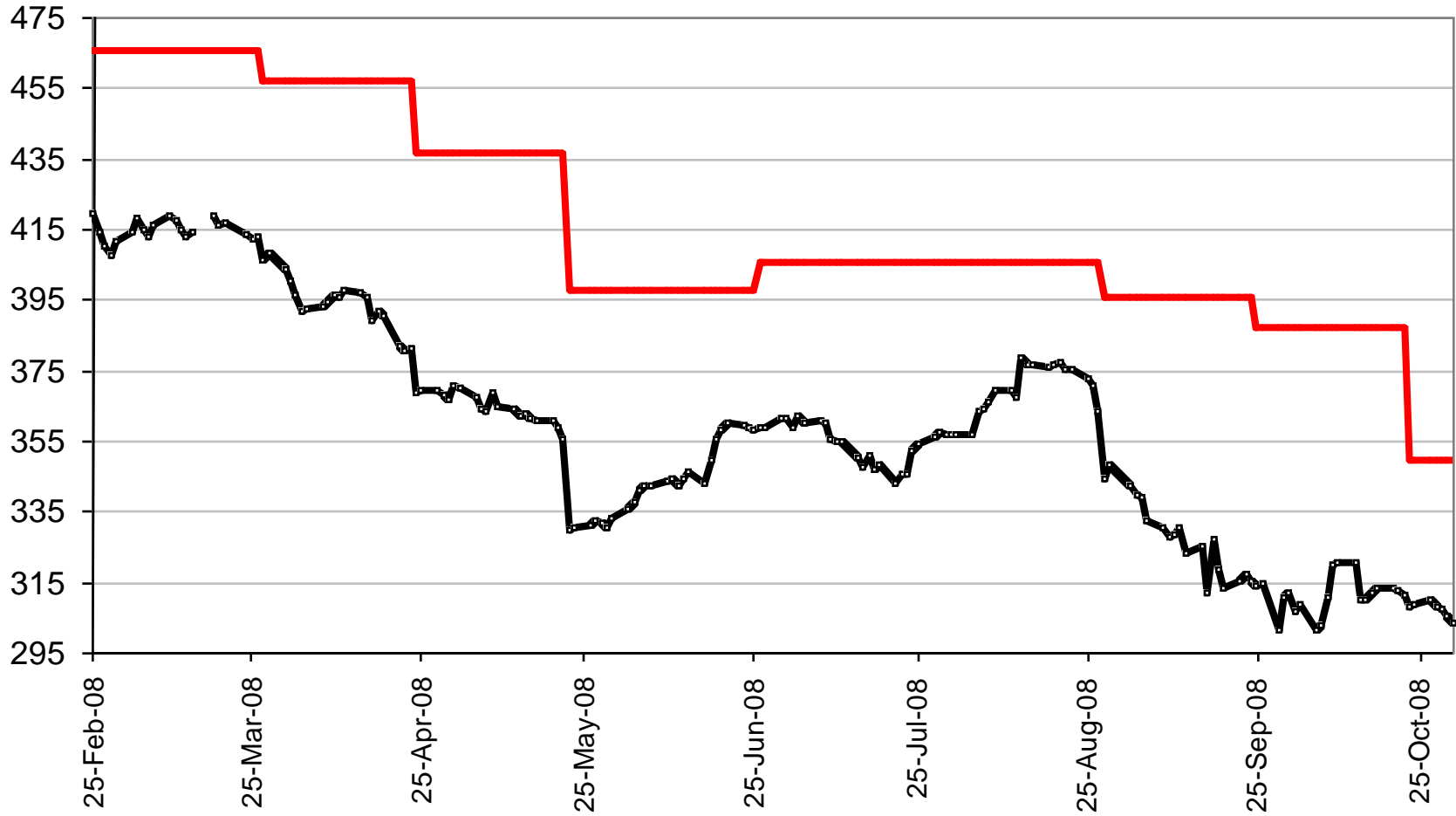
2008-09 No. 1 CWSWS Fixed Price

\$Cdn/tonne



2008-09 No. 1 CWAD 13.0 Fixed Price

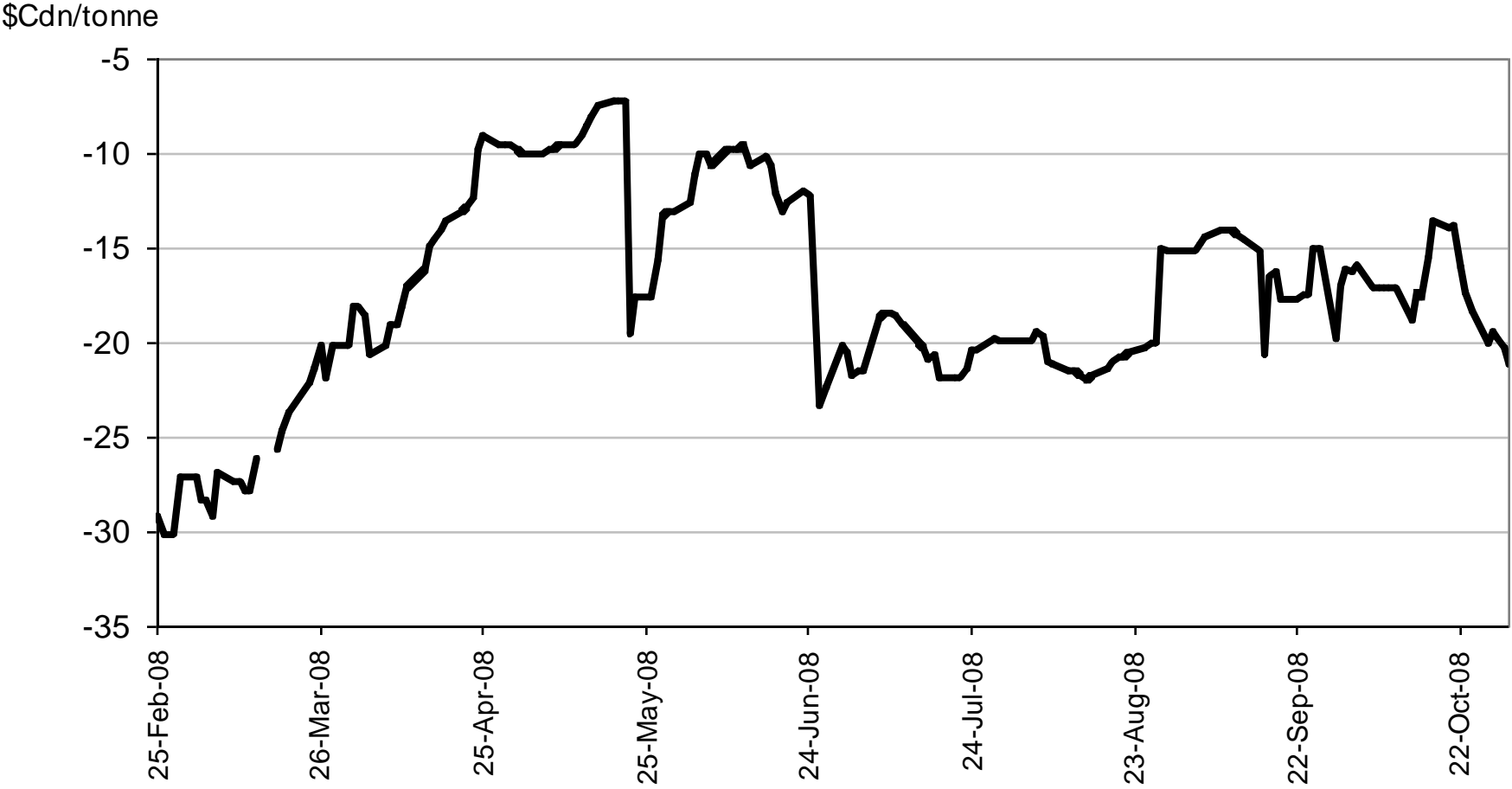
\$Cdn/tonne



— 1 CWAD 13.0 FPC — 1 CWAD 13.0 PRO

2008-09 No. 1 CWRS/HWS 13.5 Basis

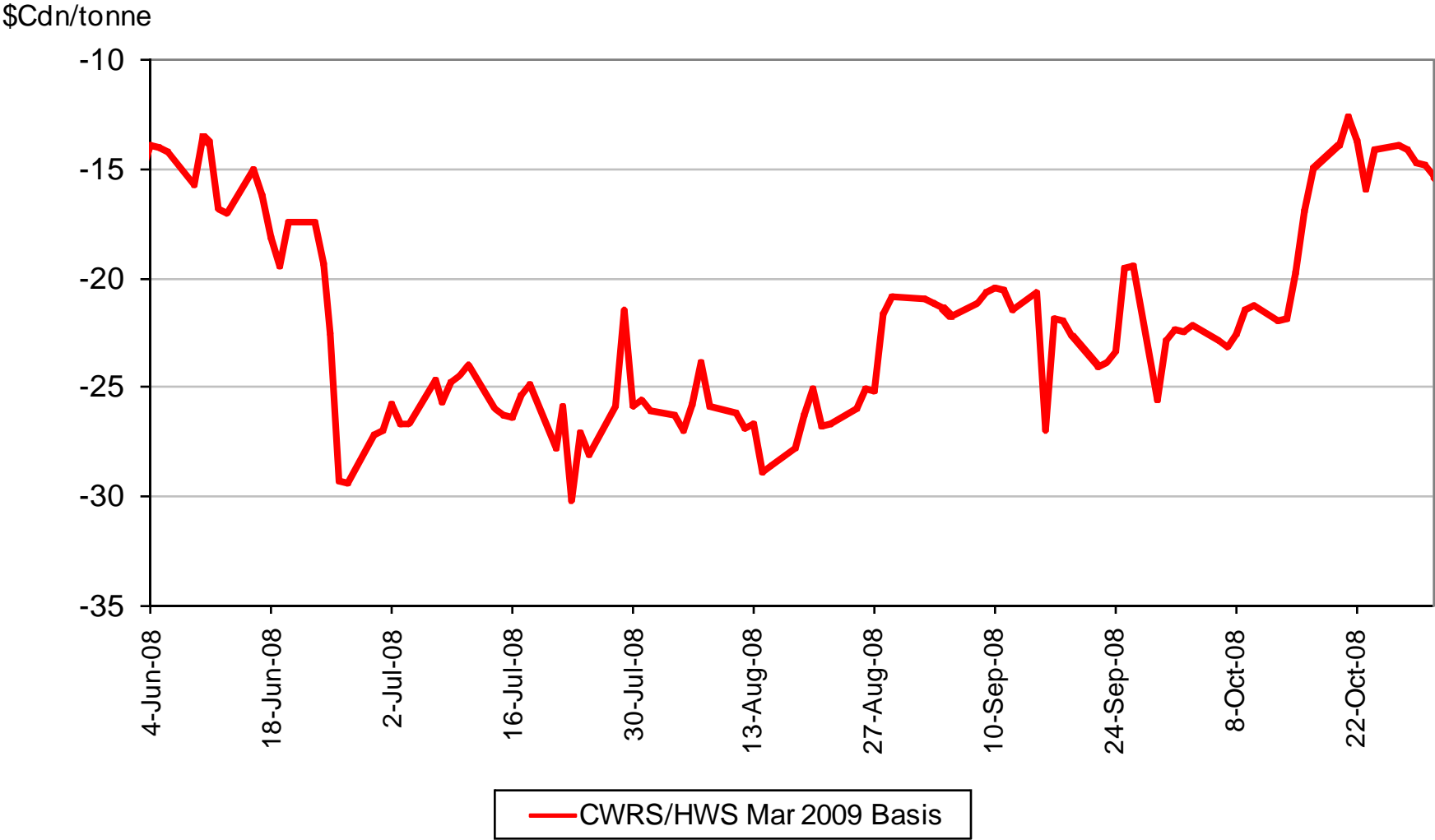
\$ per tonne basis Minn HRS Futures



— CWRS/HWS Dec 2008 Basis

2008-09 No. 1 CWRS/HWS 13.5 Basis

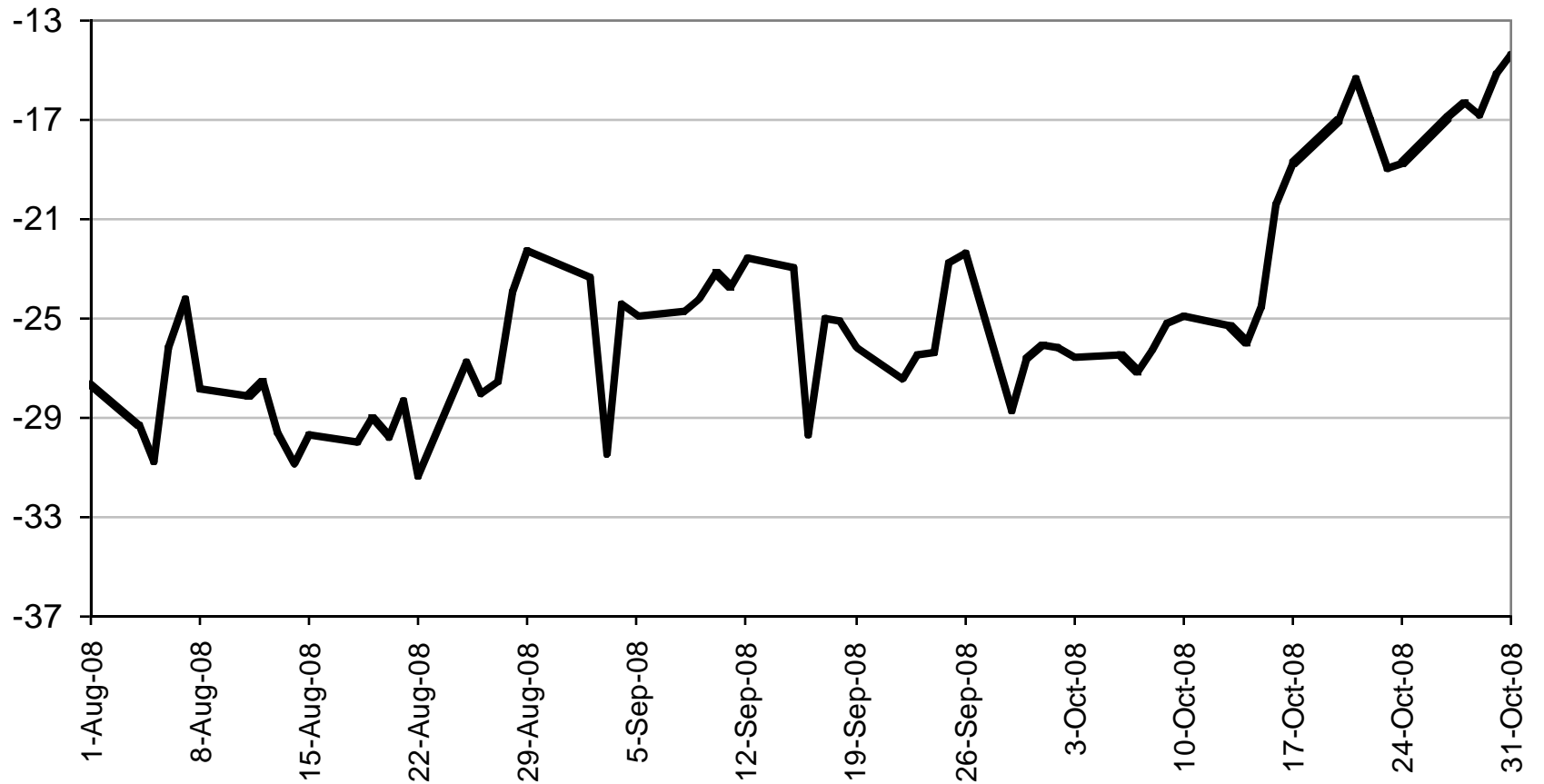
\$ per tonne basis Minn HRS Futures



2008-09 No. 1 CWRs/HWS 13.5 Basis

\$ per tonne basis Minn HRS Futures

\$Cdn/tonne

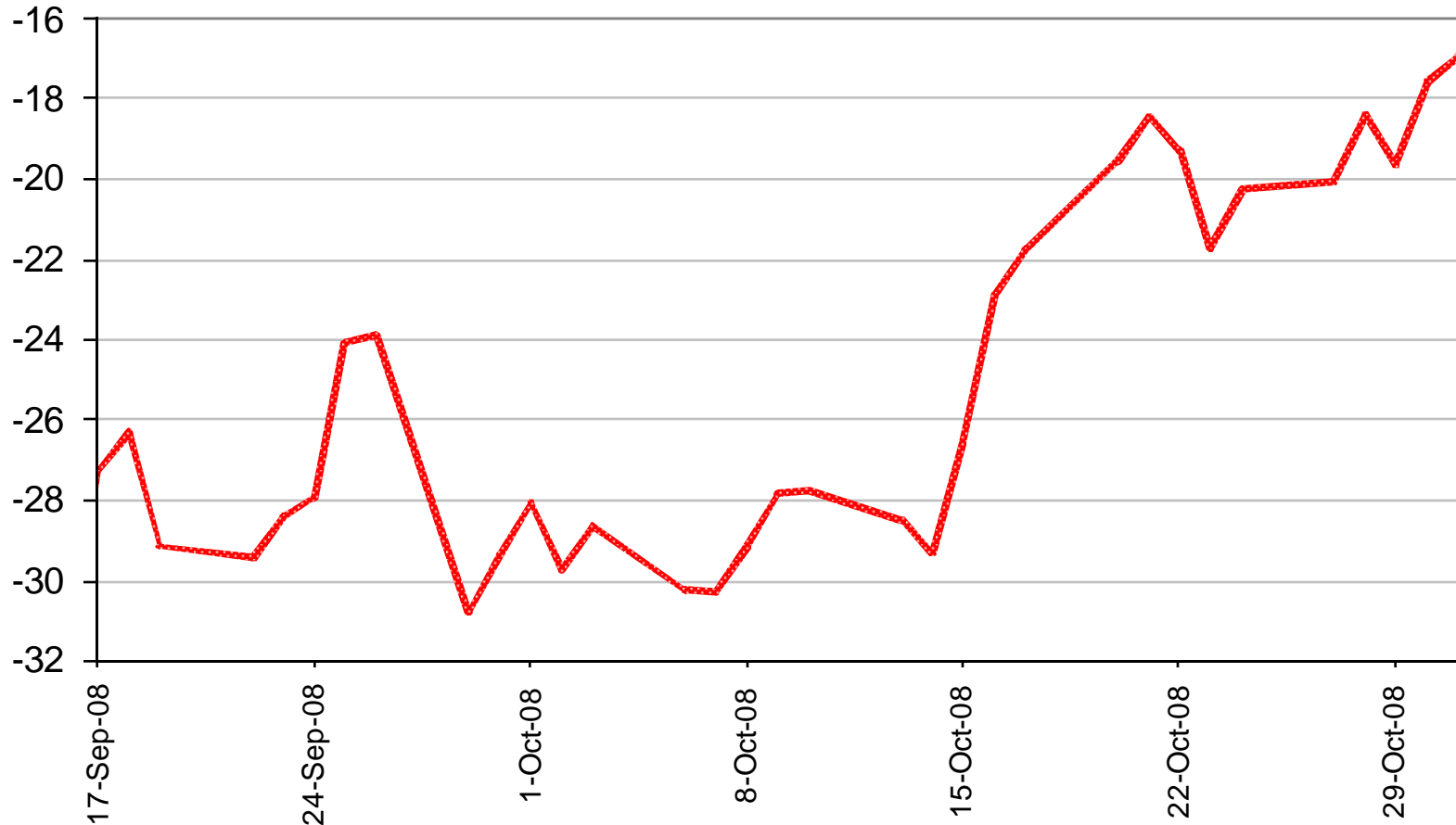


— CWRs/HWS May 2009 Basis

2008-09 No. 1 CWRS/HWS 13.5 Basis

\$ per tonne basis Minn HRS Futures

\$Cdn/tonne

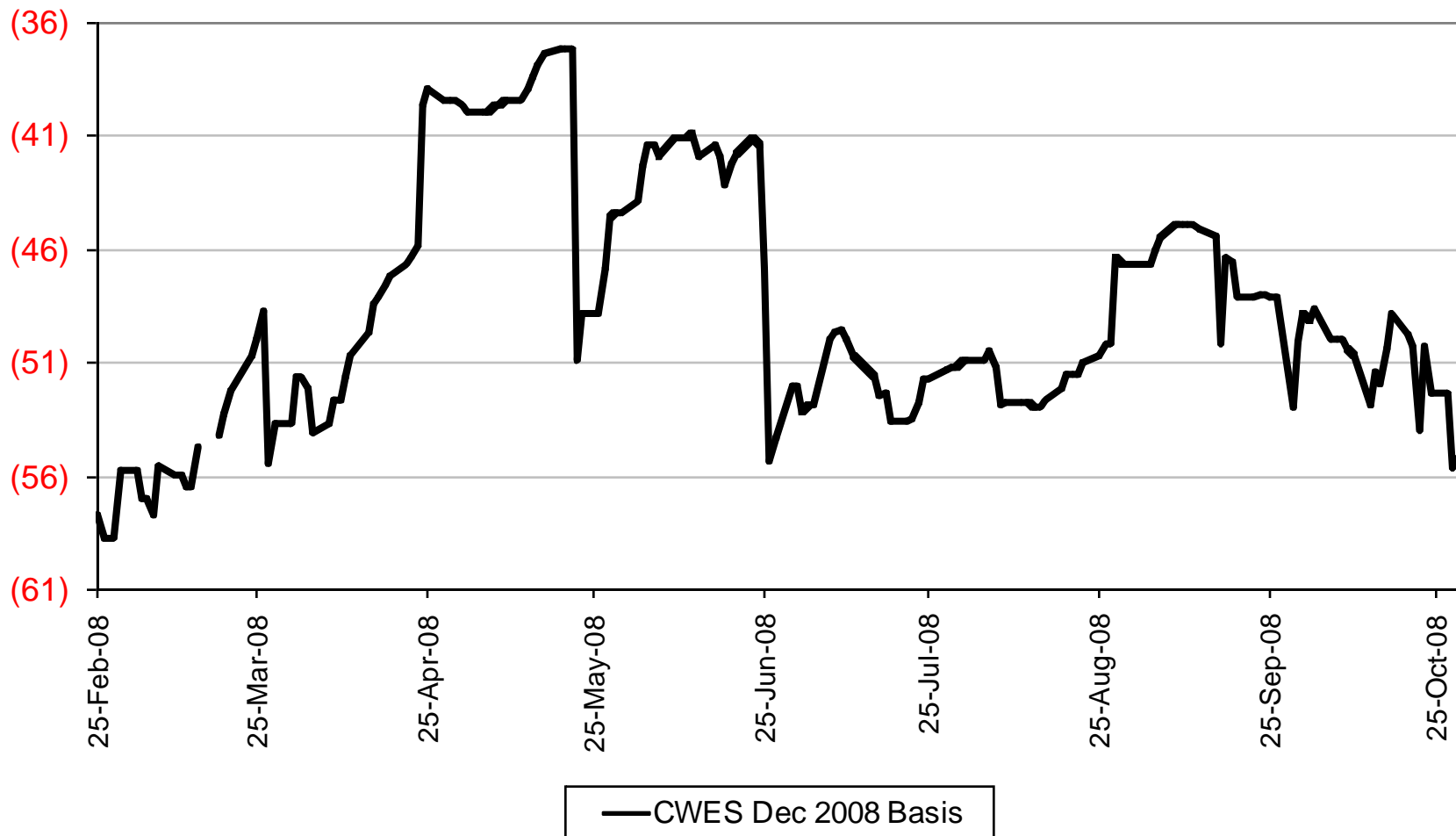


----- CWRS/HWS July 2009 Basis

2008-09 No. 1 CWES Basis

\$ per tonne basis Minn HRS Futures

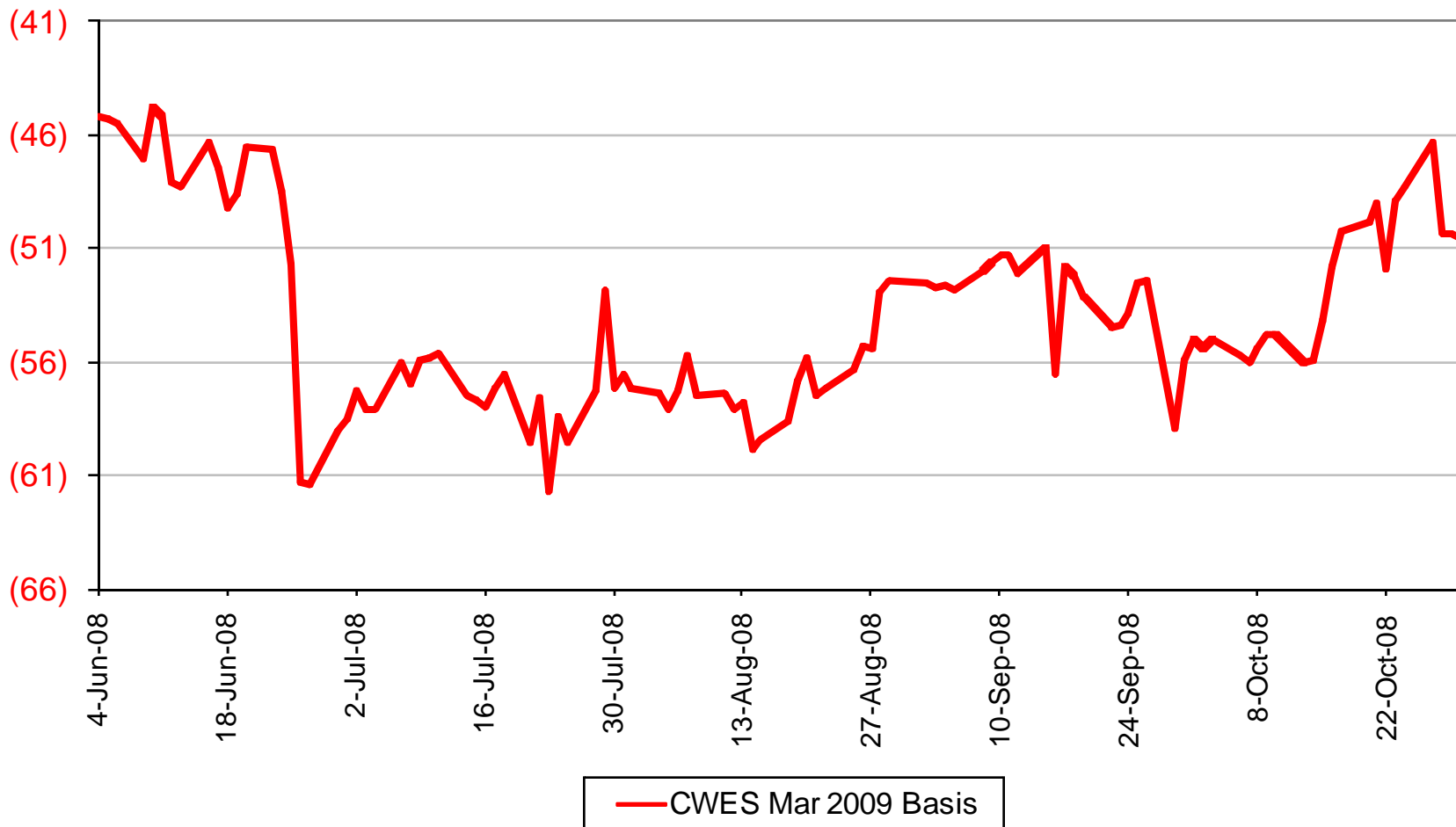
\$Cdn/tonne



2008-09 No. 1 CWES Basis

\$ per tonne basis Minn HRS Futures

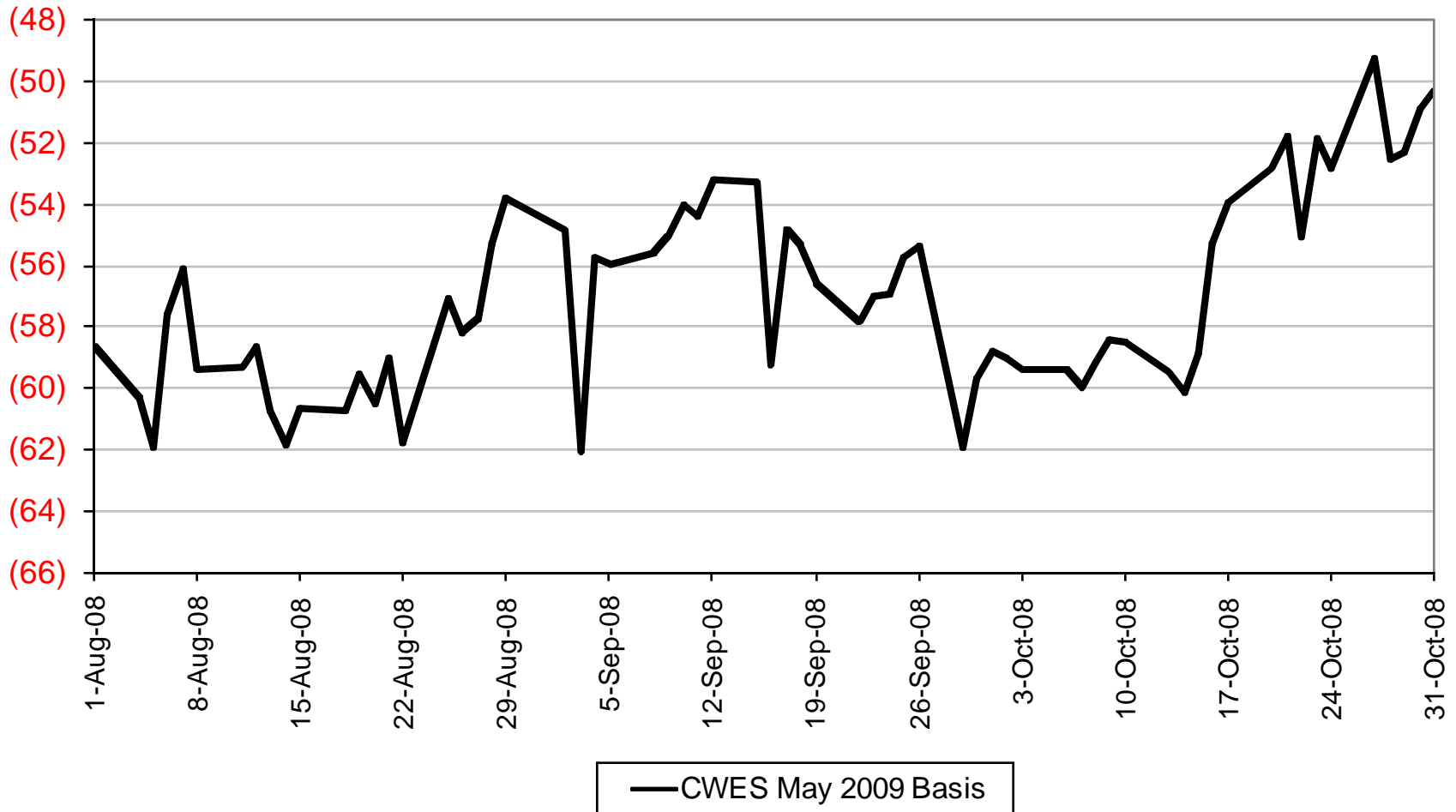
\$Cdn/tonne



2008-09 No. 1 CWES Basis

\$ per tonne basis Minn HRS Futures

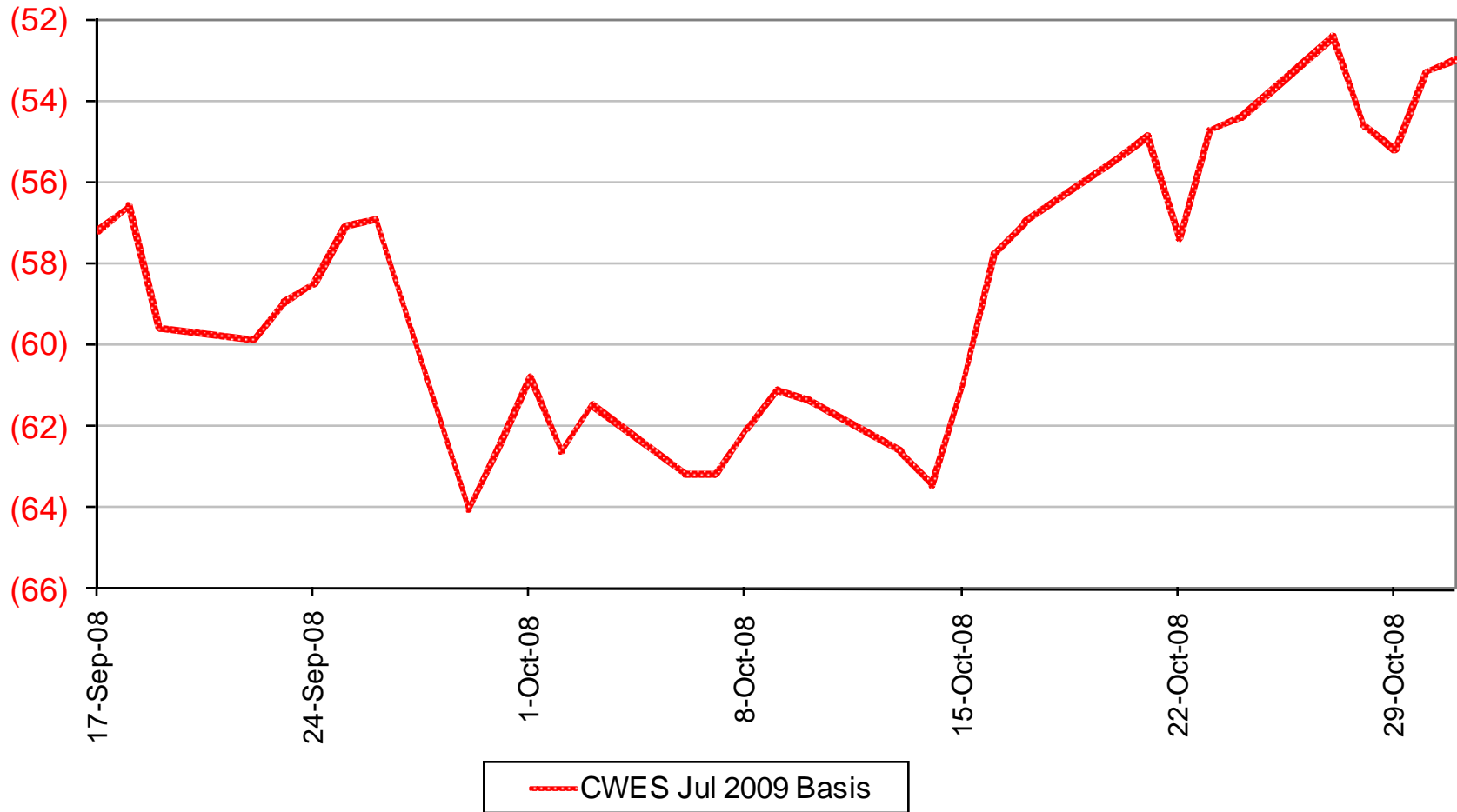
\$Cdn/tonne



2008-09 No. 1 CWES Basis

\$ per tonne basis Minn HRS Futures

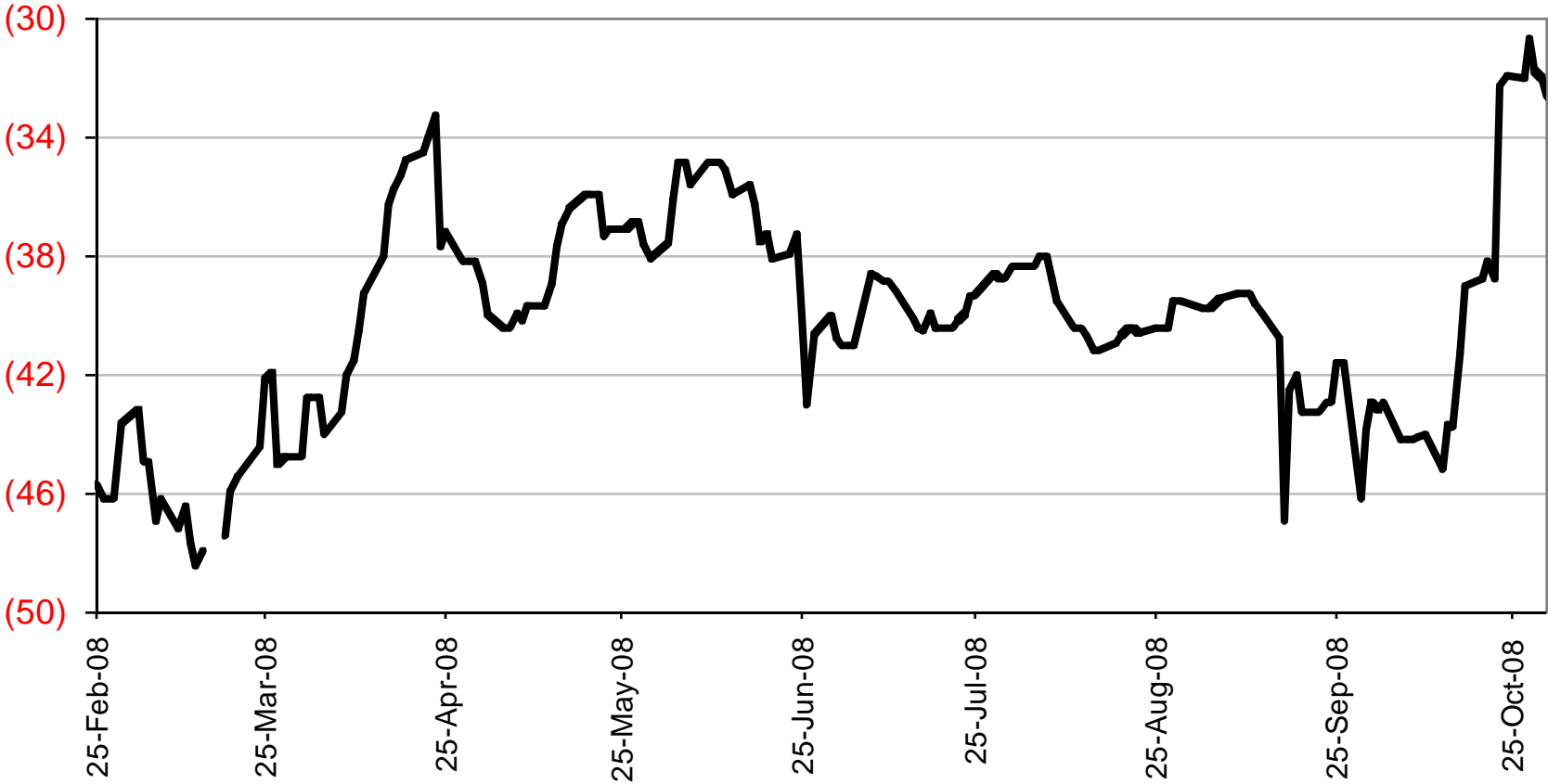
\$Cdn/tonne



2008-09 No. 1 CPSR Basis

\$ per tonne basis Kansas HRW Futures

\$Cdn/tonne

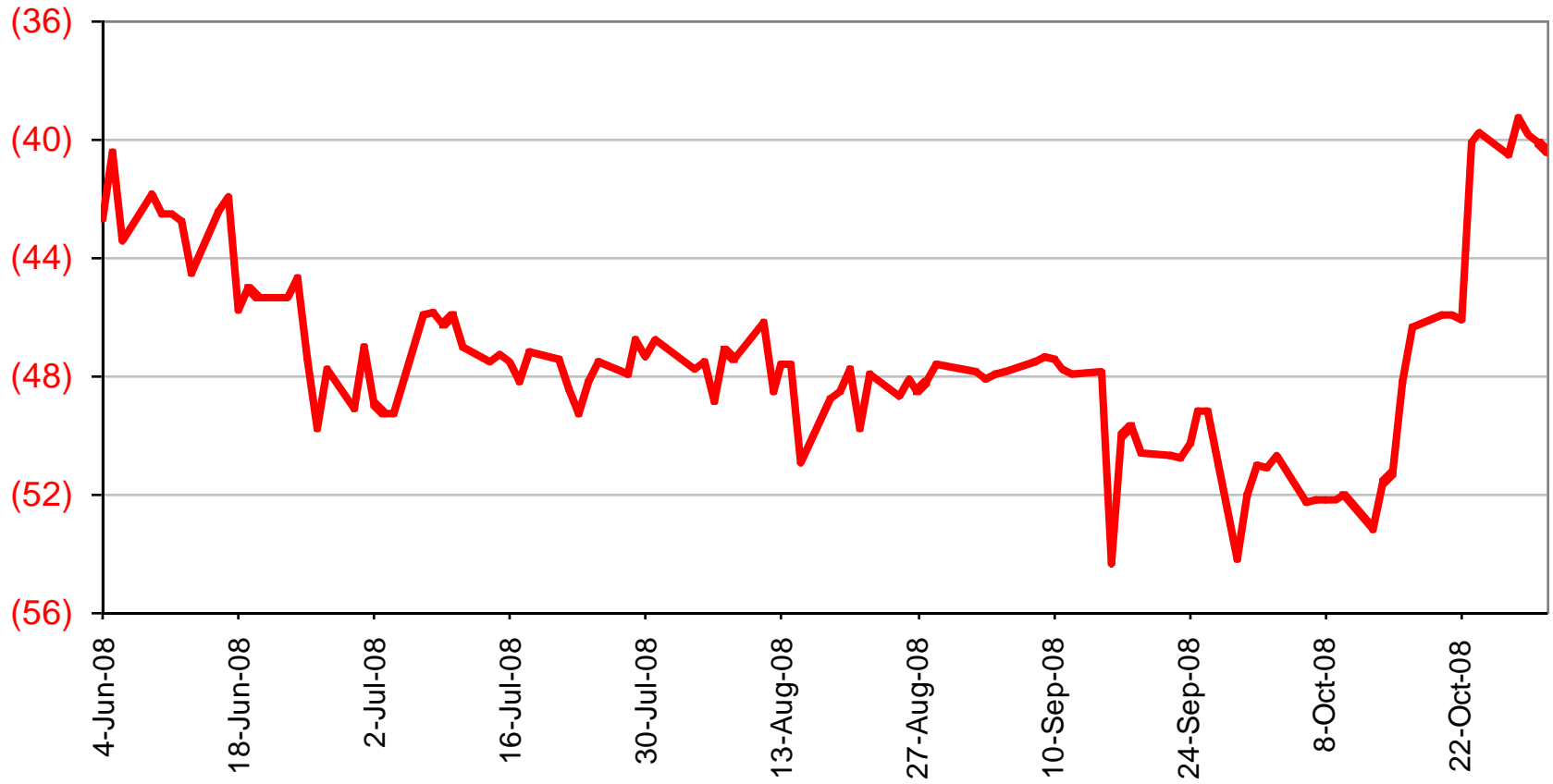


— CPSR Dec 2008 Basis

2008-09 No. 1 CPSR Basis

\$ per tonne basis Kansas HRW Futures

\$Cdn/tonne

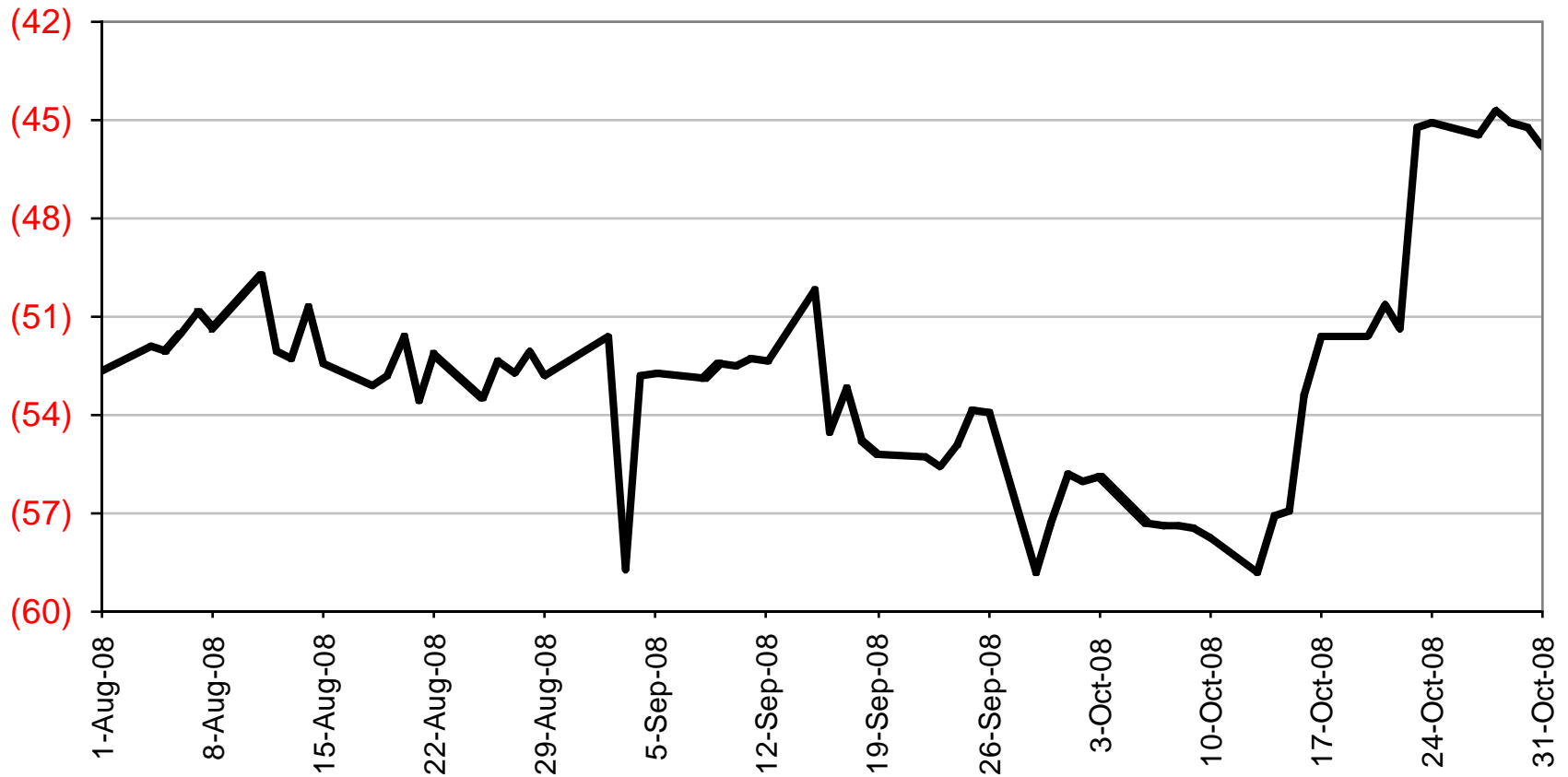


— CPSR Mar 2009 Basis

2008-09 No. 1 CPSR Basis

\$ per tonne basis Kansas HRW Futures

\$Cdn/tonne

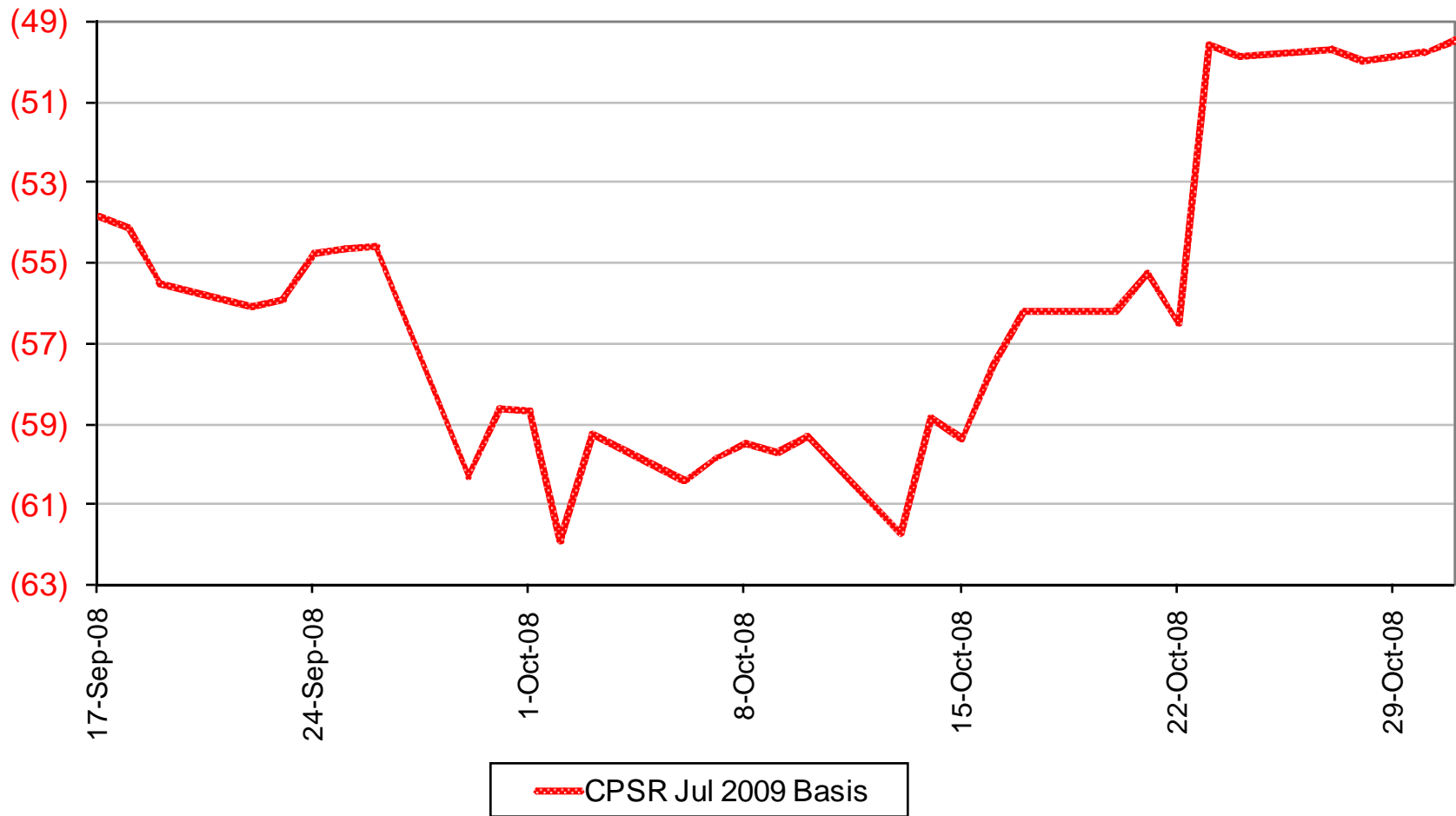


— CPSR May 2009 Basis

2008-09 No. 1 CPSR Basis

\$ per tonne basis Kansas HRW Futures

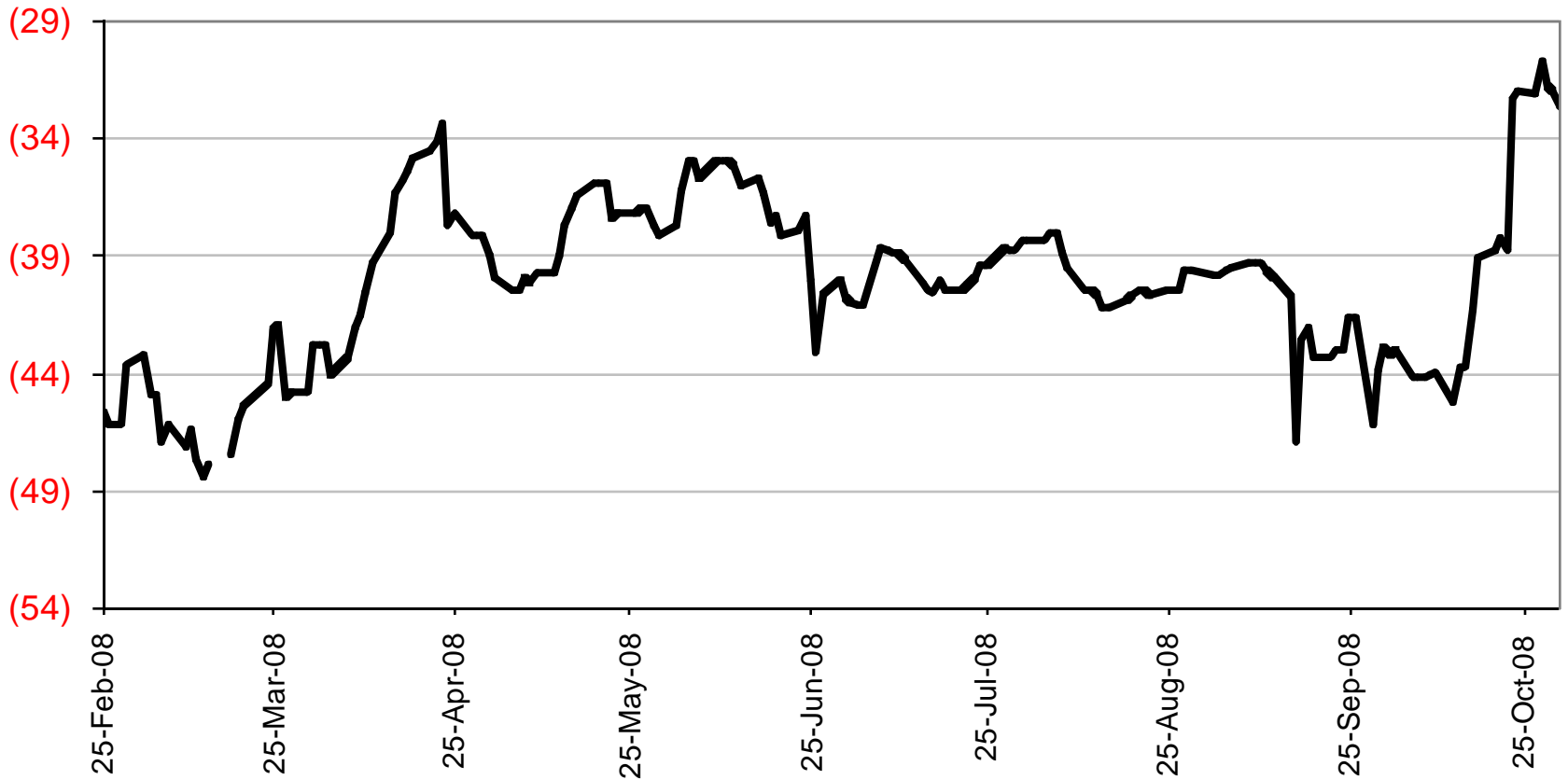
\$Cdn/tonne



2008-09 No. 1 CPSW Basis

\$ per tonne below Kansas HRW Futures

\$Cdn/tonne

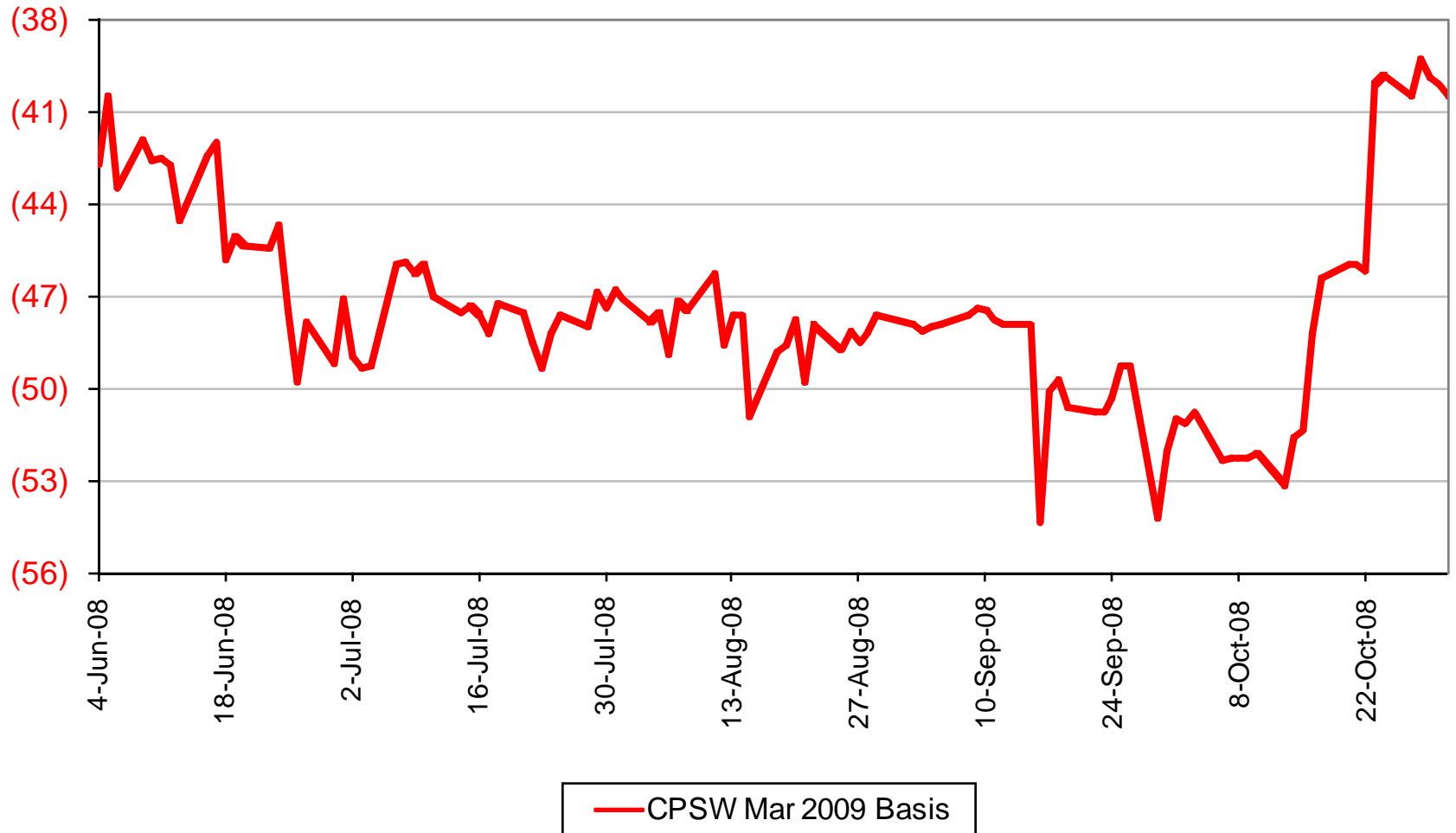


— CPSW Dec 2008 Basis

2008-09 No. 1 CPSW Basis

\$ per tonne basis Kansas HRW Futures

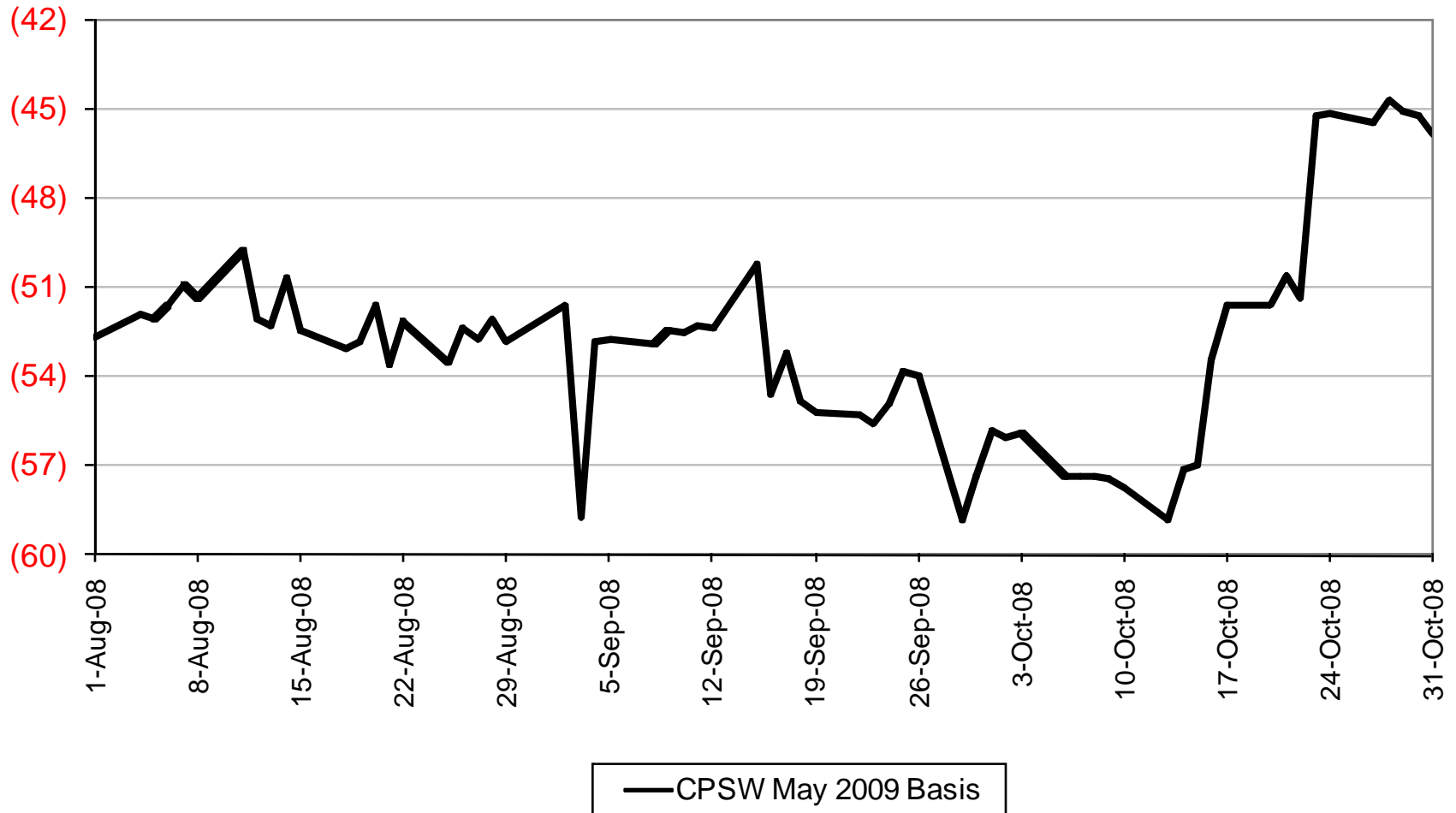
\$Cdn/tonne



2008-09 No. 1 CPSW Basis

\$ per tonne basis Kansas HRW Futures

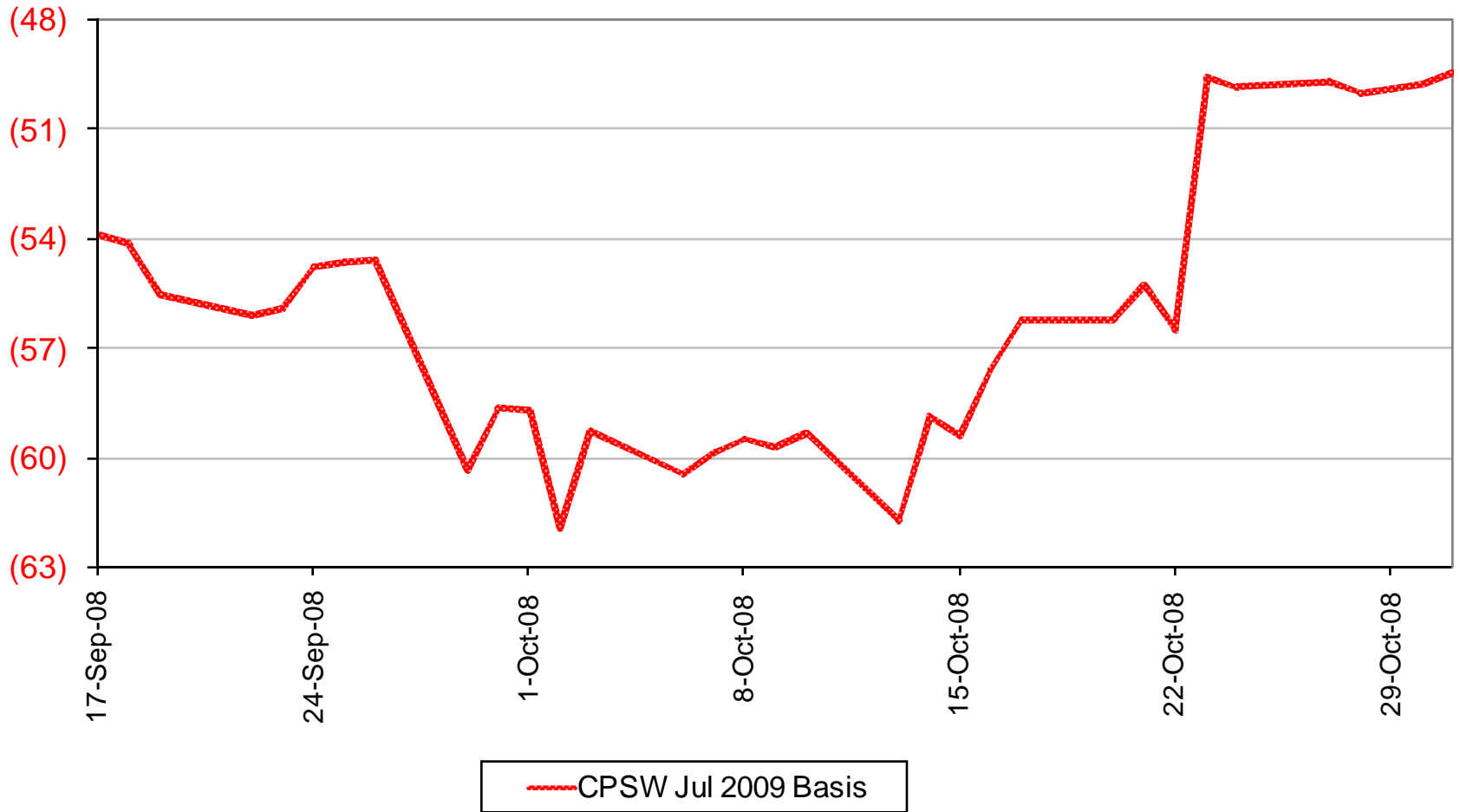
\$Cdn/tonne



2008-09 No. 1 CPSW Basis

\$ per tonne basis Kansas HRW Futures

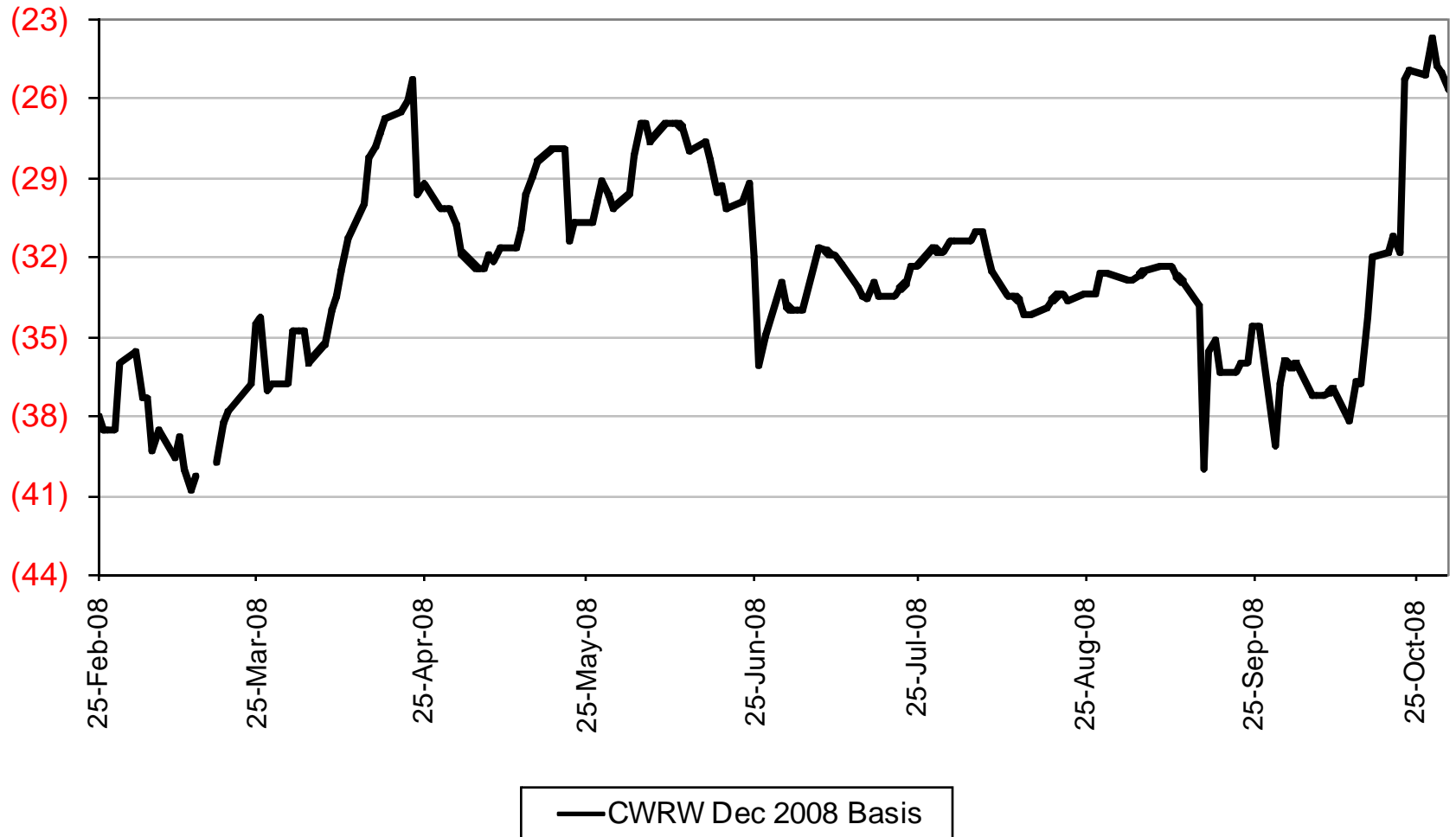
\$Cdn/tonne



2008-09 No. 1 CWRW Select 11.5 Basis

\$ per tonne basis Kansas HRW Futures

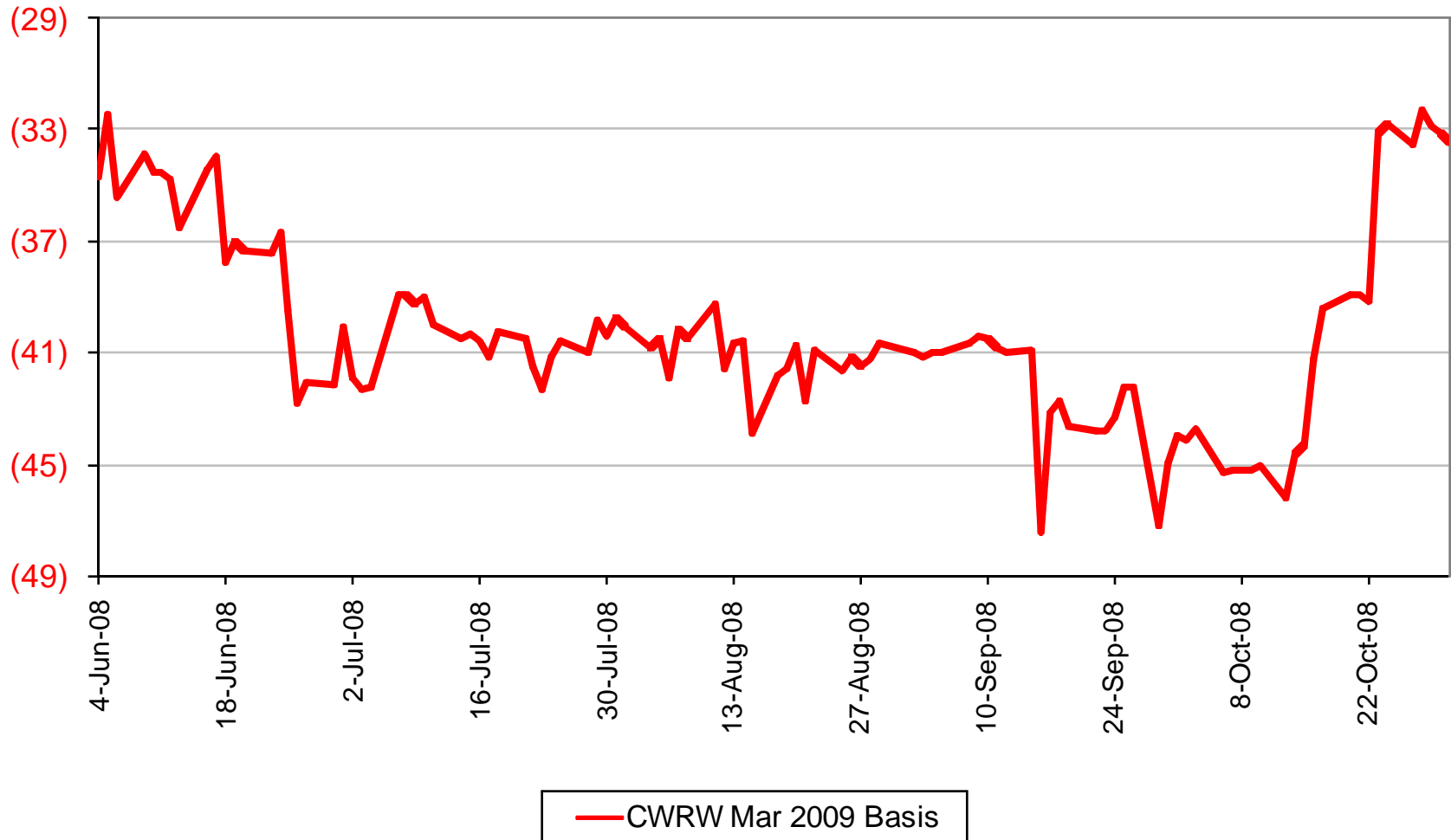
\$Cdn/tonne



2008-09 No. 1 CWRW Select 11.5 Basis

\$ per tonne basis Kansas HRW Futures

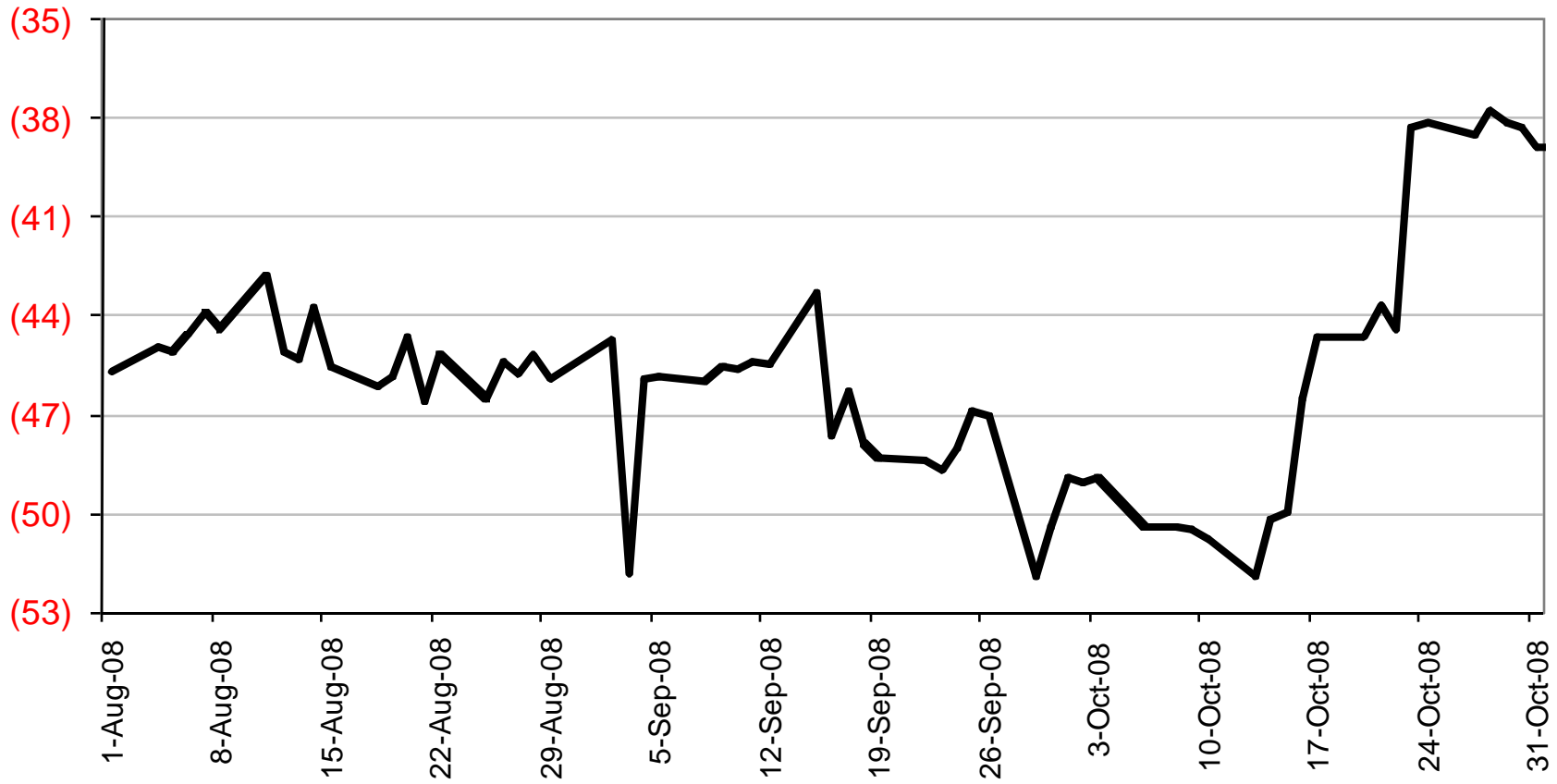
\$Cdn/tonne



2008-09 No. 1 CWRW Select 11.5 Basis

\$ per tonne basis Kansas HRW Futures

\$Cdn/tonne

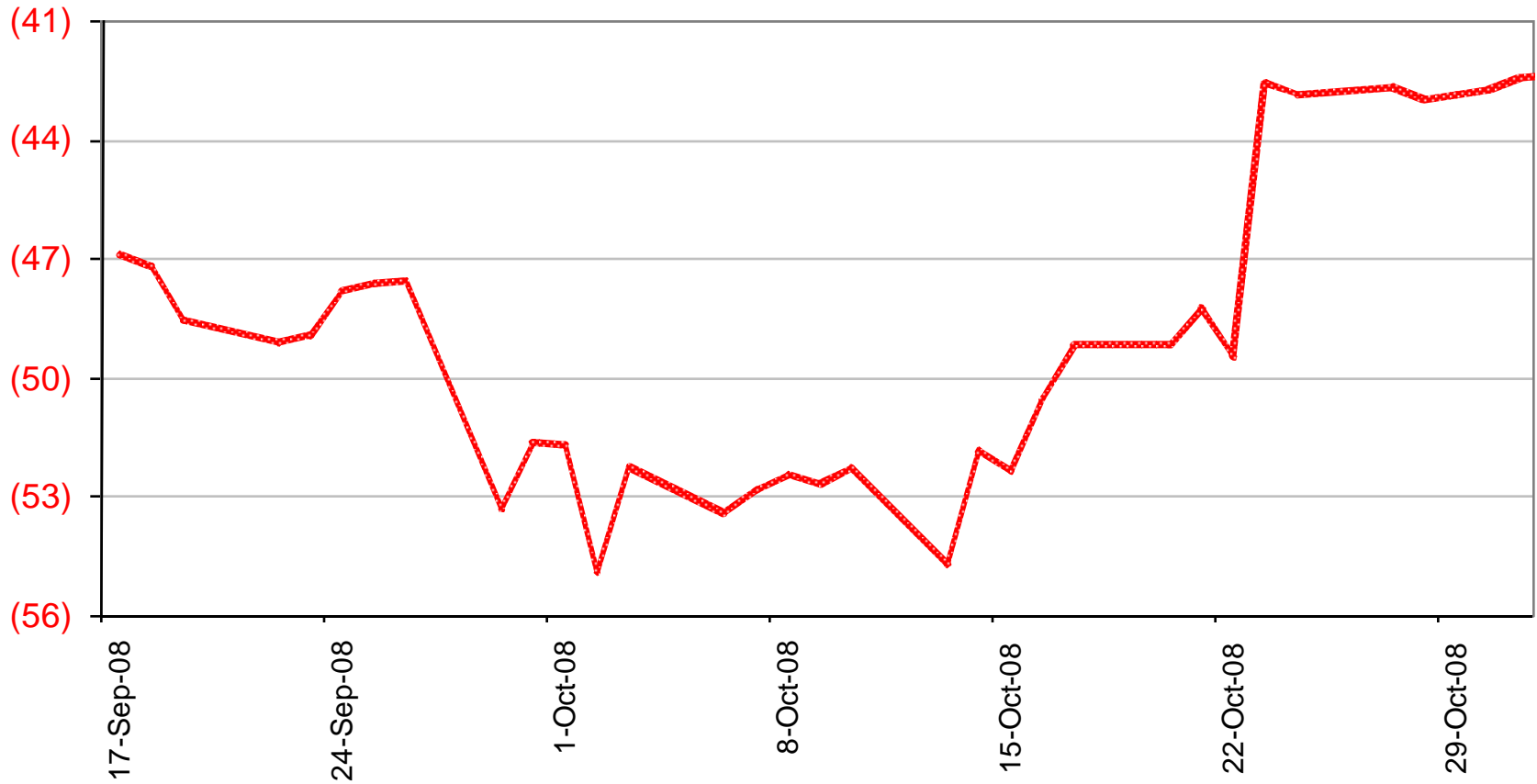


— CWRW May 2009 Basis

2008-09 No. 1 CWRW Select 11.5 Basis

\$ per tonne basis Kansas HRW Futures

\$Cdn/tonne

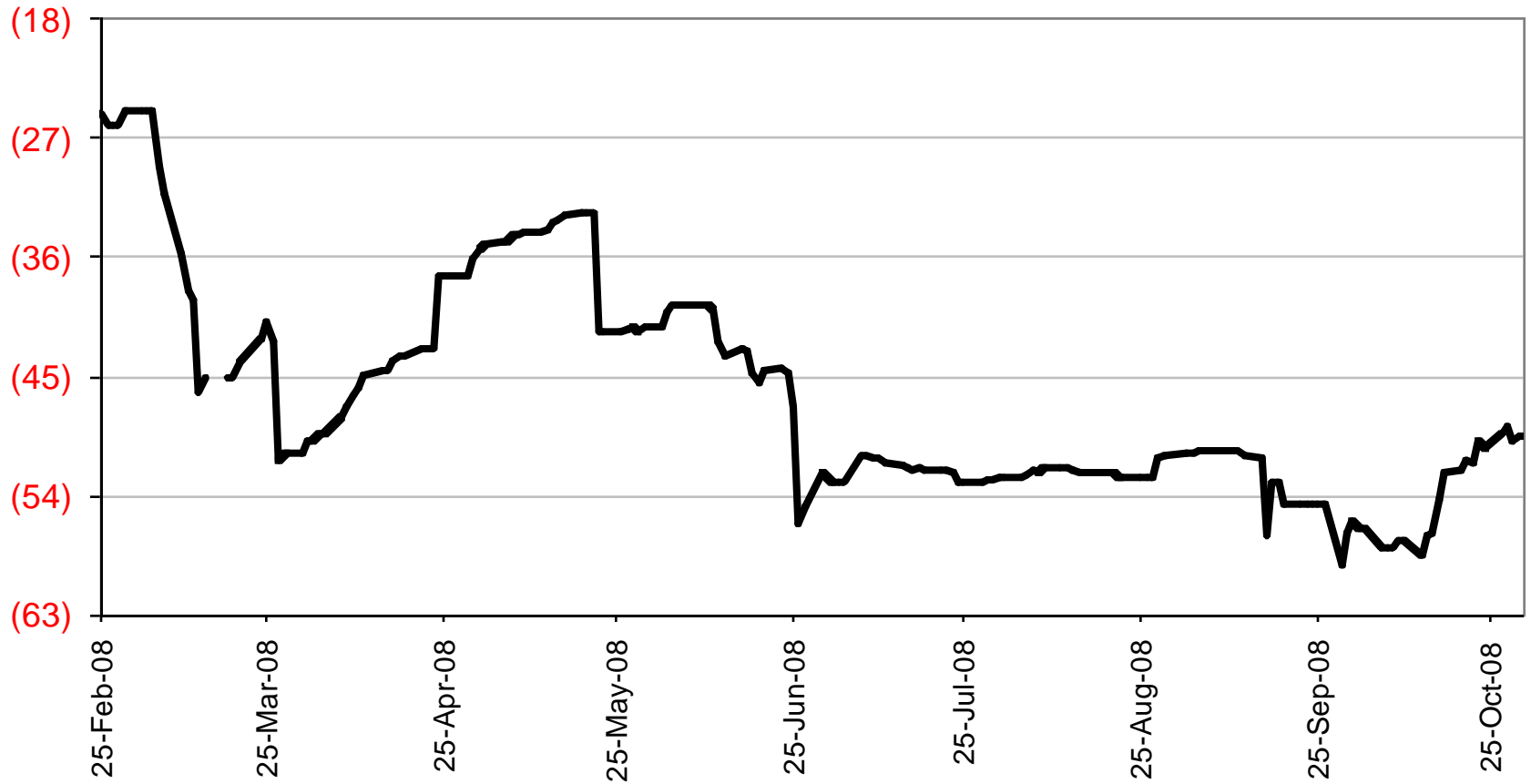


.....CWRW Jul 2009 Basis

2008-09 No. 1 CWSWS Basis Levels

\$ per tonne basis Chicago SRW Futures

\$Cdn/tonne

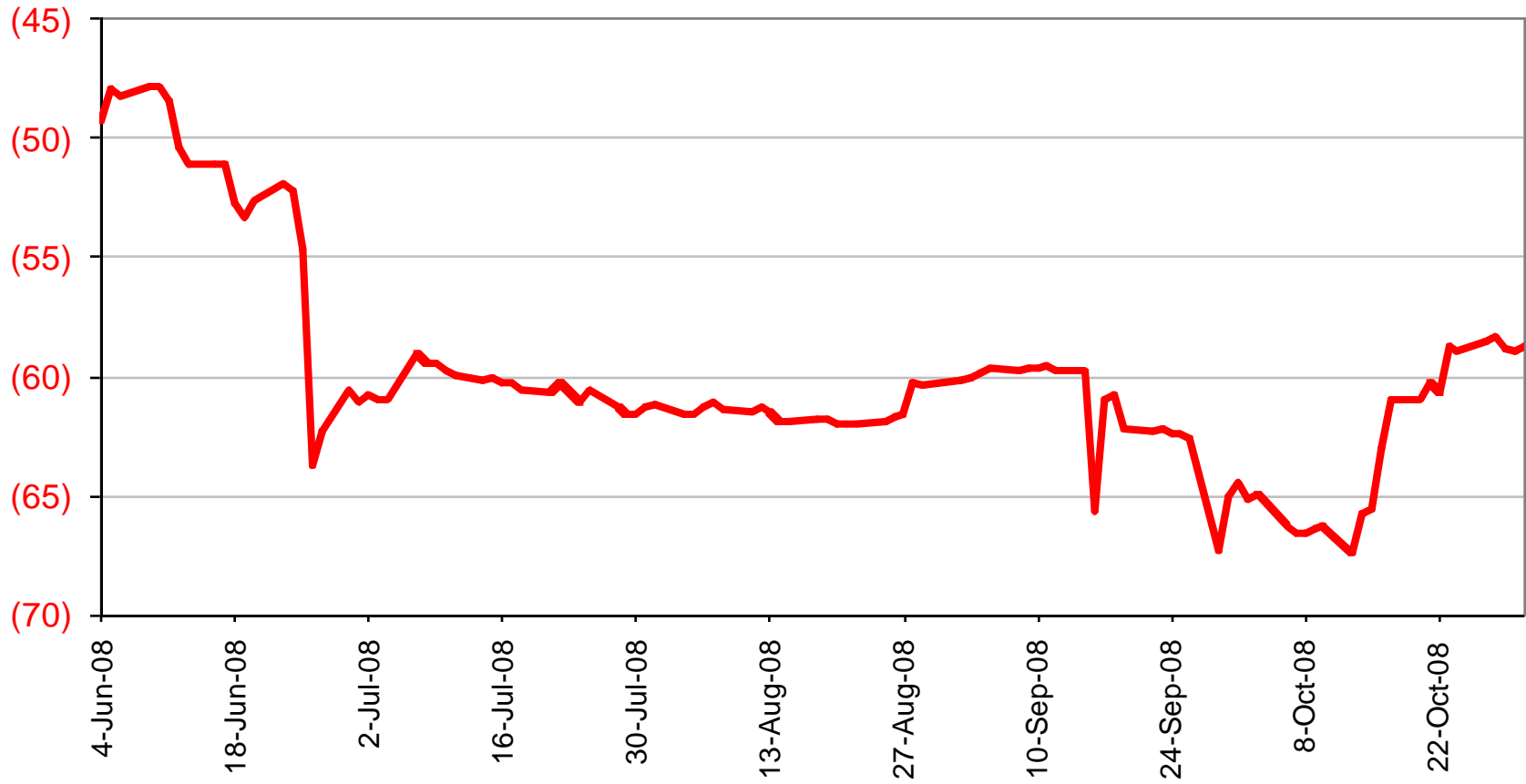


— CWSWS Dec 2008 Basis

2008-09 No. 1 CWSWS Basis Levels

\$ per tonne basis Chicago SRW Futures

\$Cdn/tonne



— CWSWS Mar 2009 Basis

2008-09 No. 1 CWSWS Basis Levels

\$ per tonne basis Chicago SRW Futures

\$Cdn/tonne

