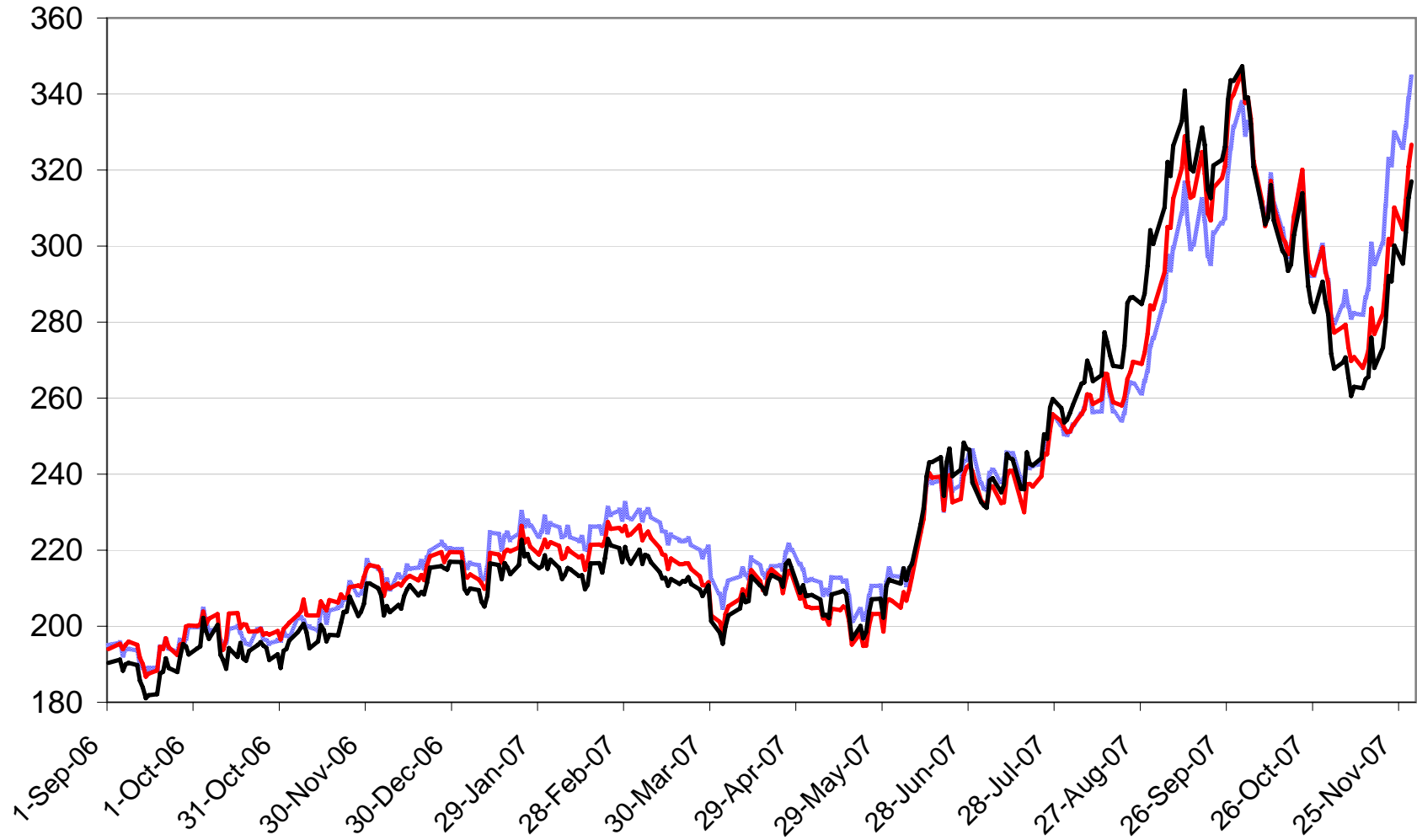


December 2007 Wheat Futures

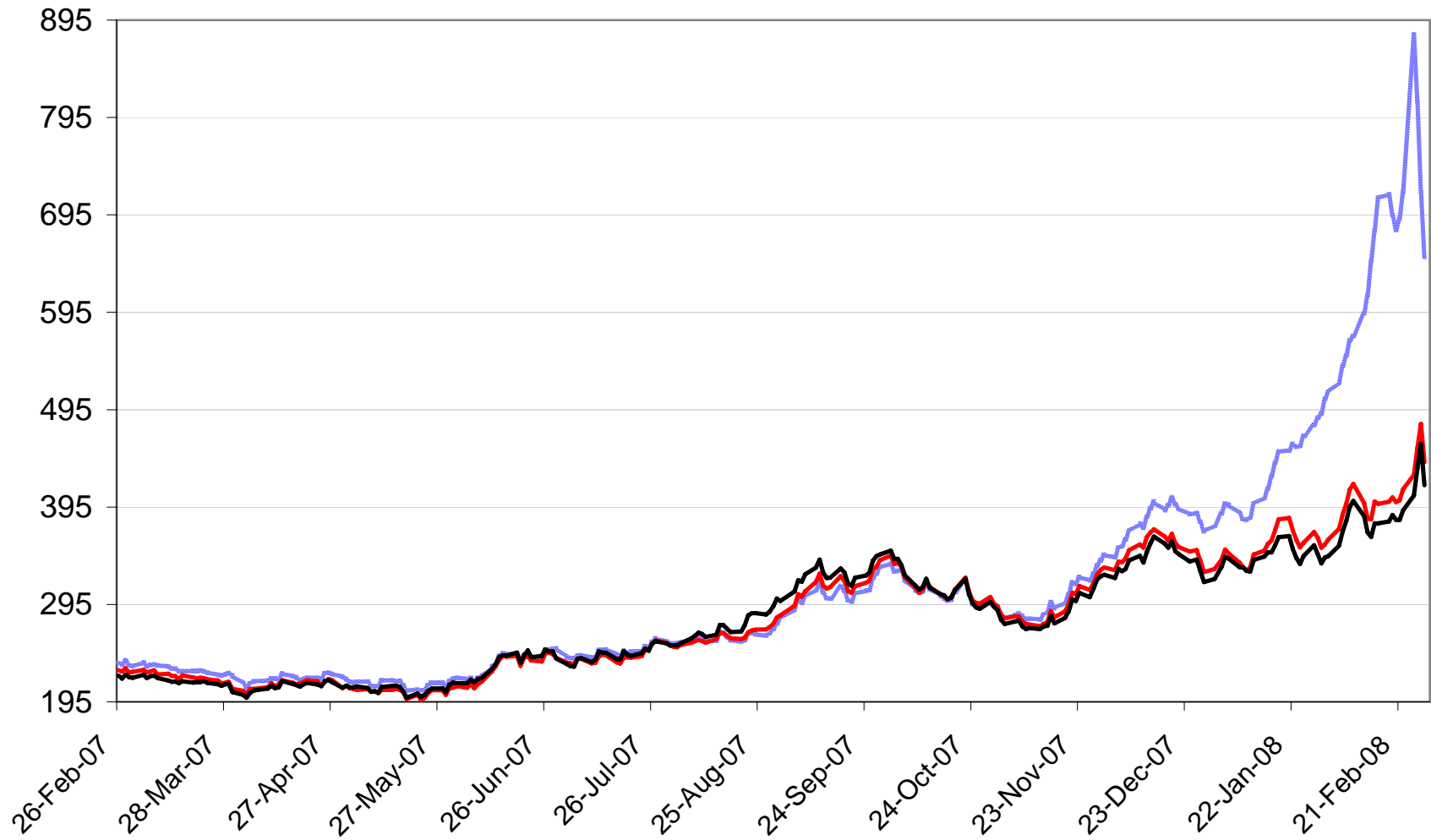
\$Cdn/tonne



— Minneapolis HRS Dec 2007 — Kansas HRW Dec 2007 — Chicago SRW Dec 2007

March 2008 Wheat Futures

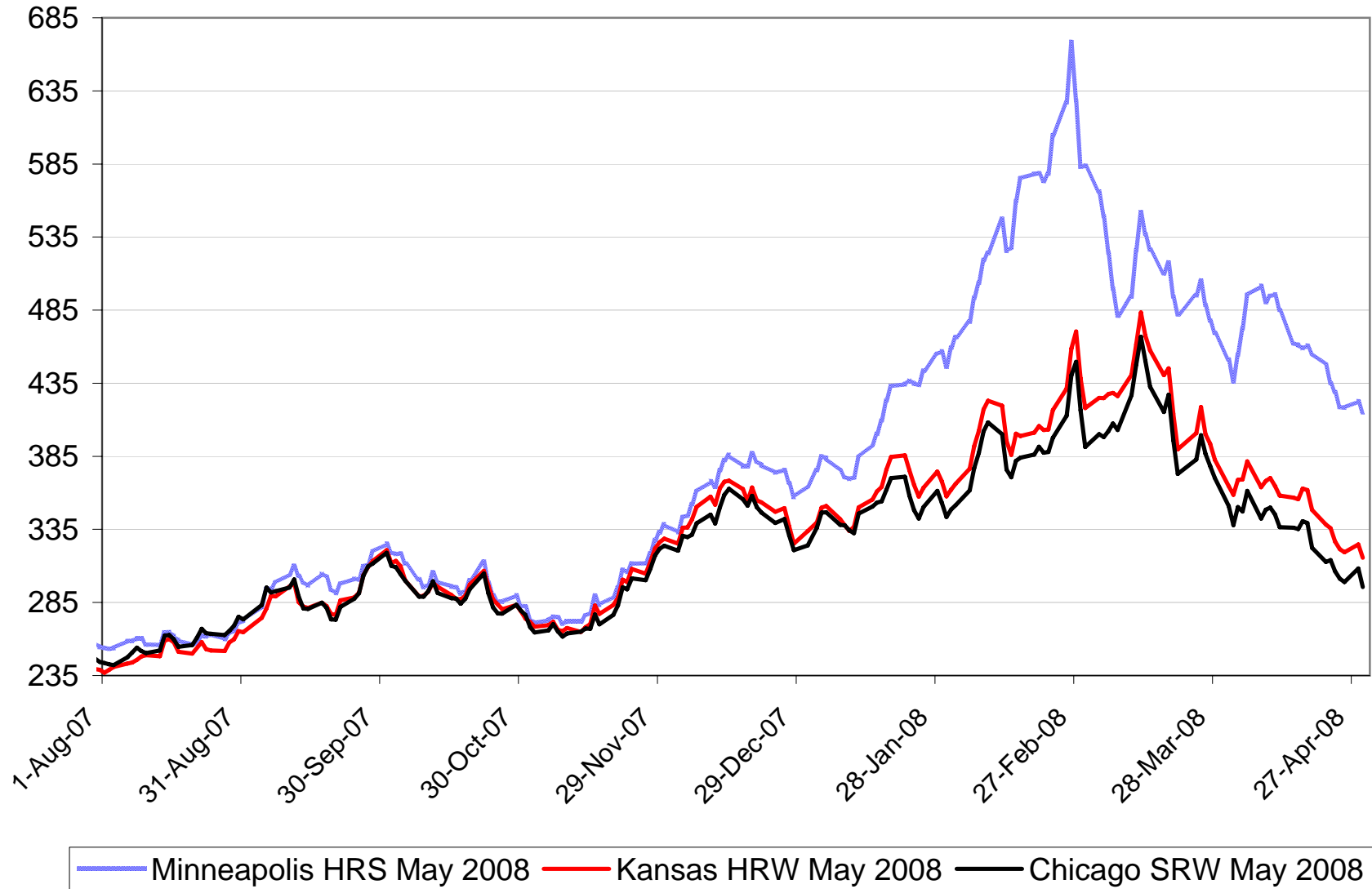
\$Cdn/tonne



— Minneapolis HRS March 2008 — Kansas HRW March 2008 — Chicago SRW March 2008

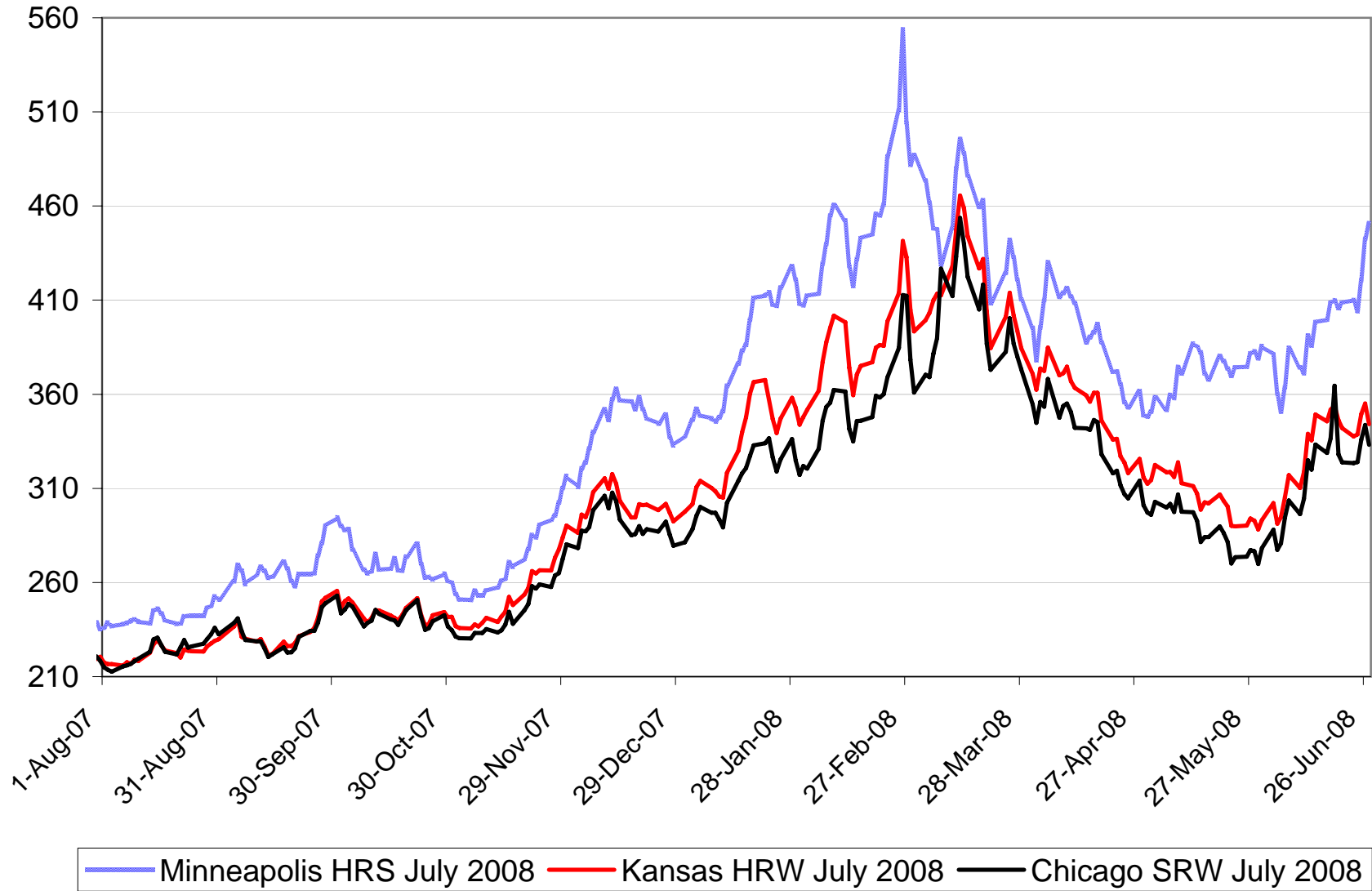
May 2008 Wheat Futures

\$Cdn/tonne



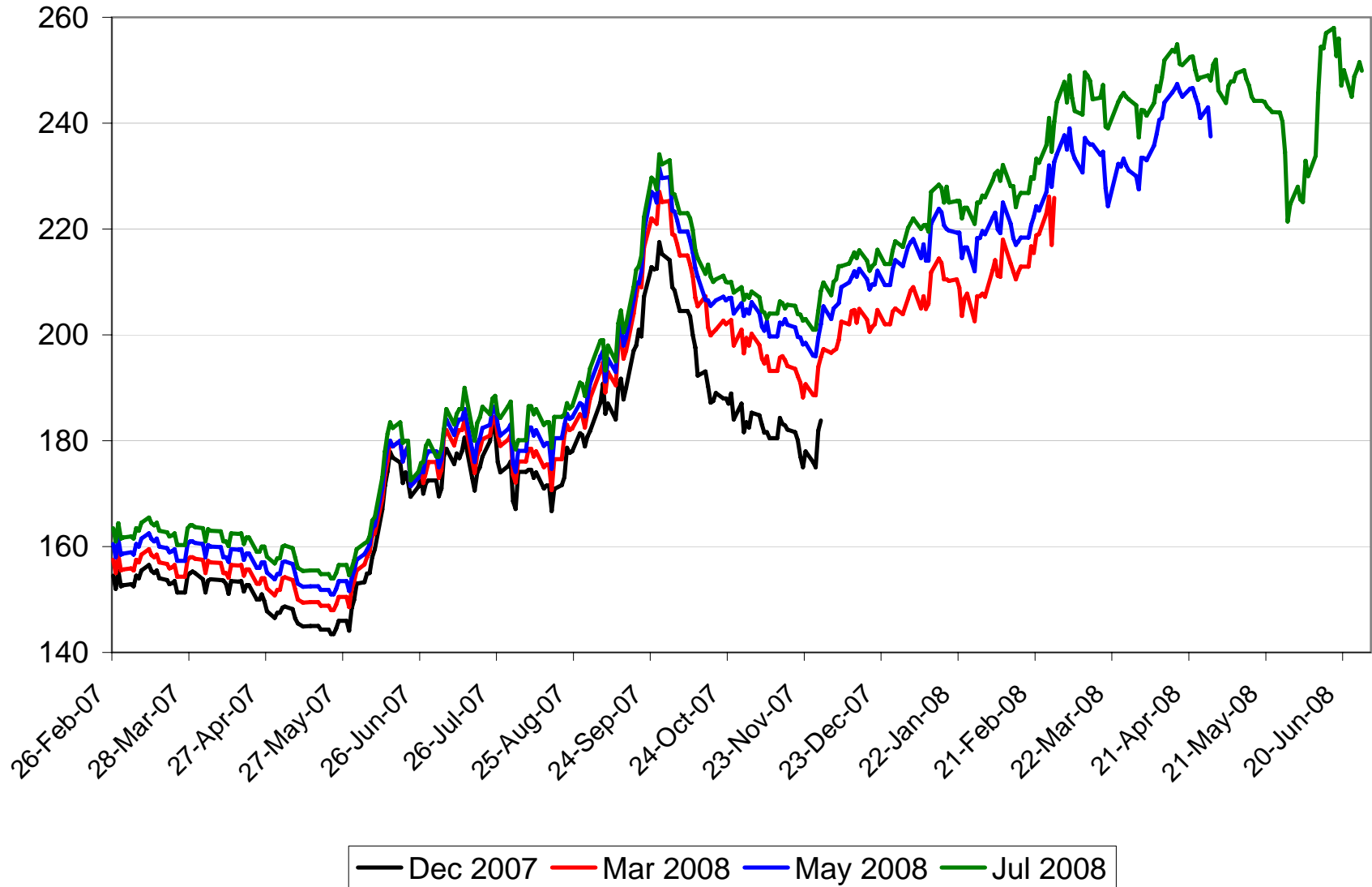
July 2008 Wheat Futures

\$Cdn/tonne

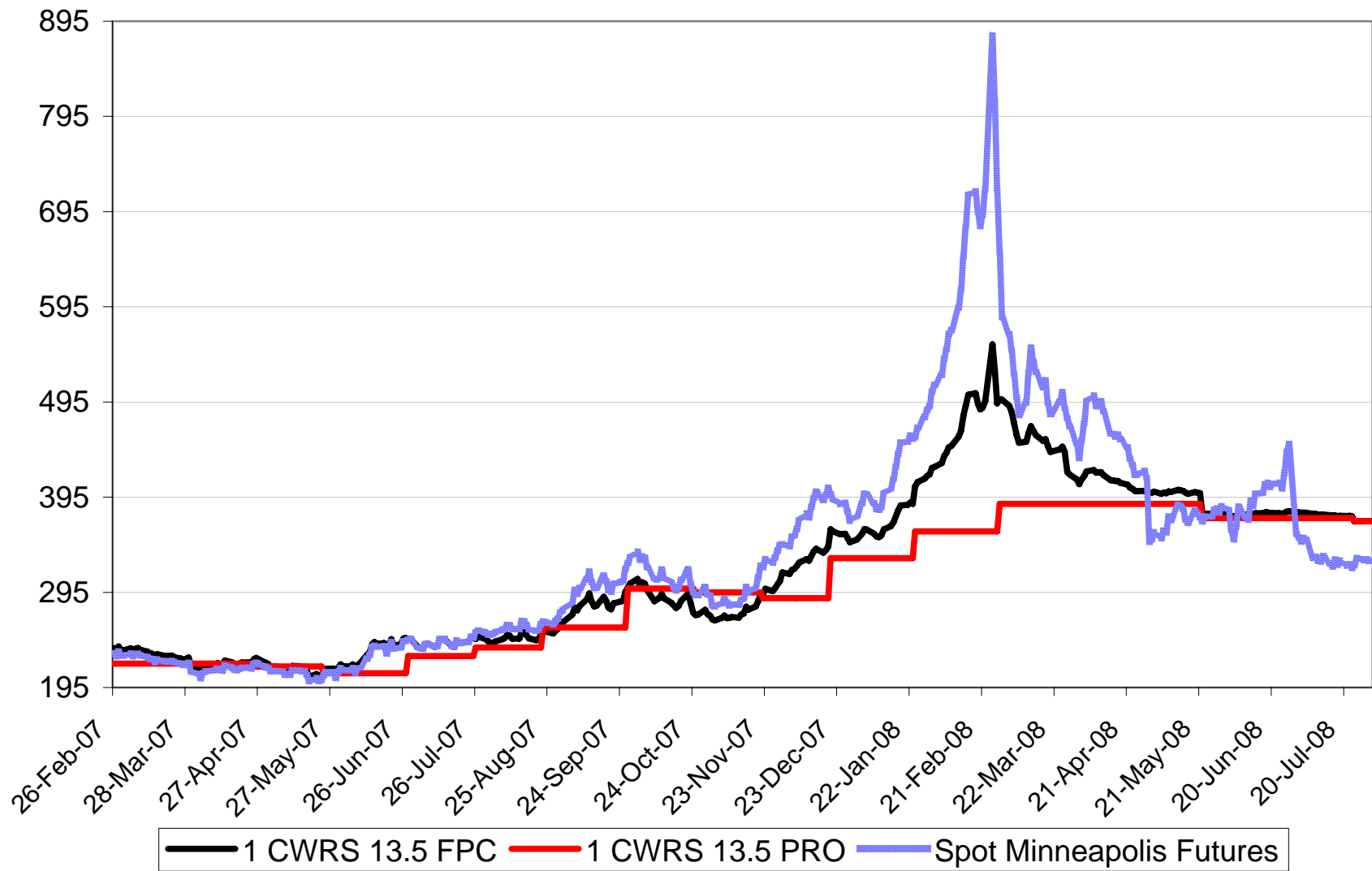


Winnipeg Western Barley Futures

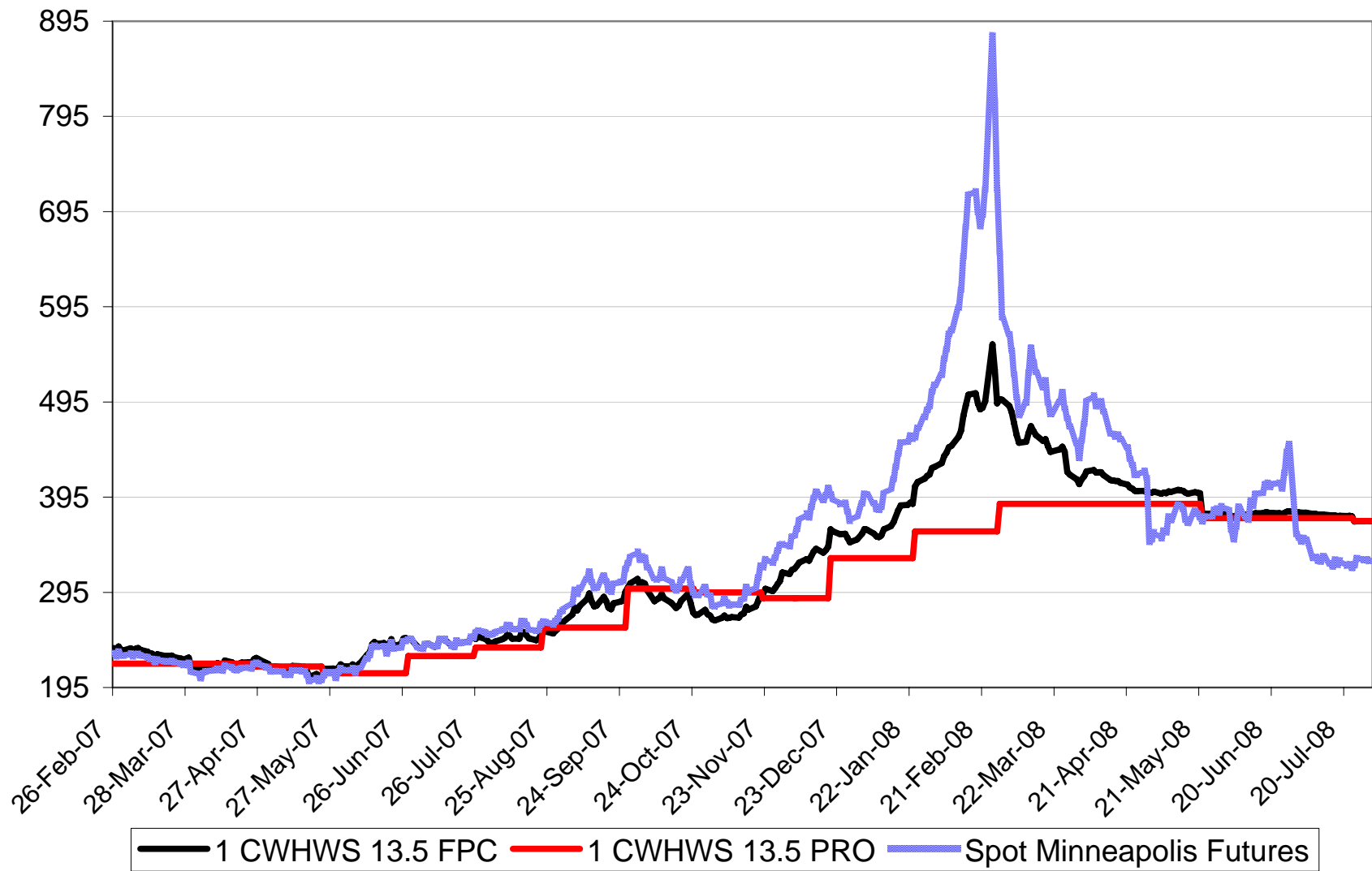
\$Cdn/tonne



\$Cdn/tonne 2007-08 No.1 CWRS 13.5 Fixed Price

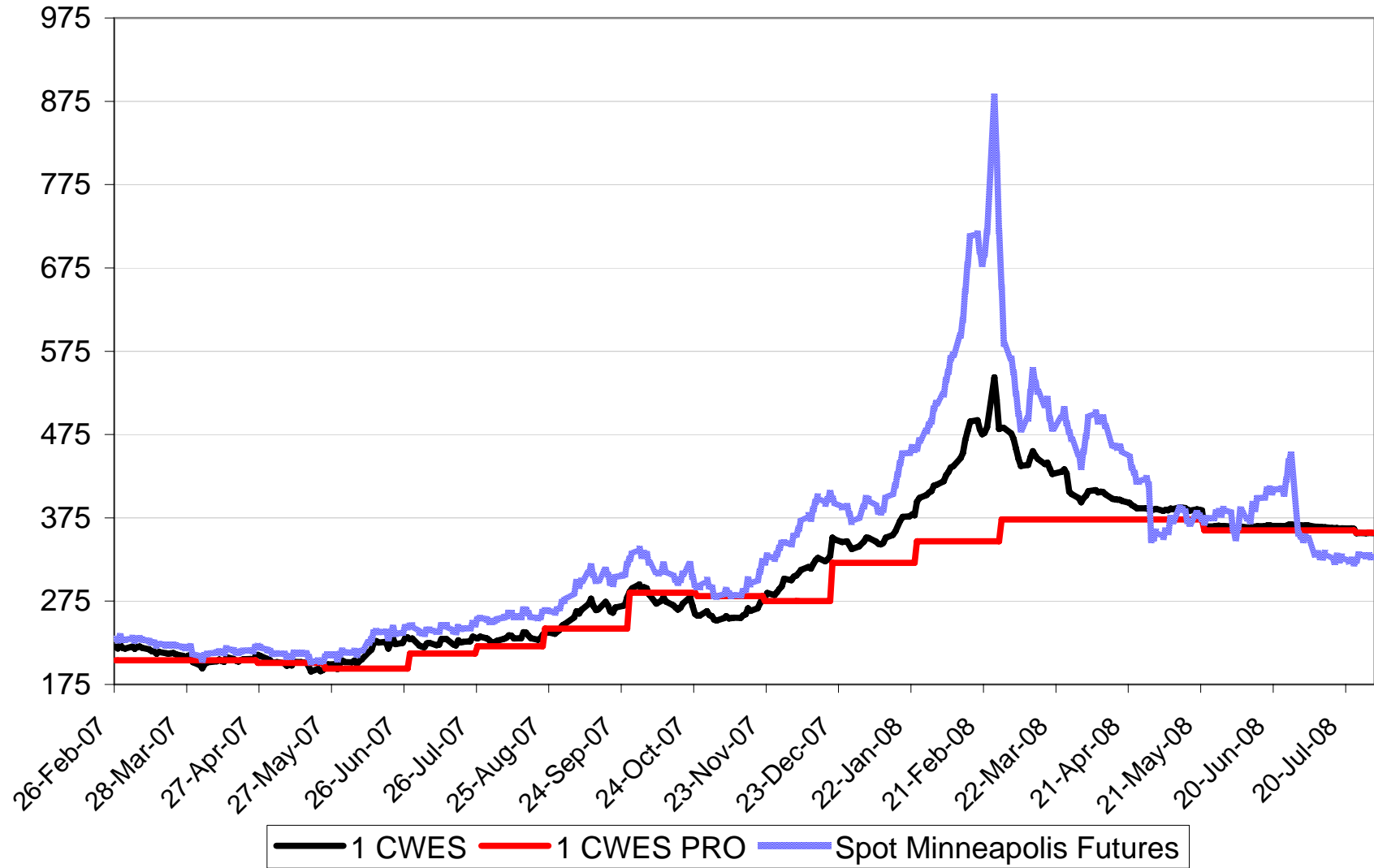


\$Cdn/tonne 2007-08 No.1 CWHWS 13.5 Fixed Price



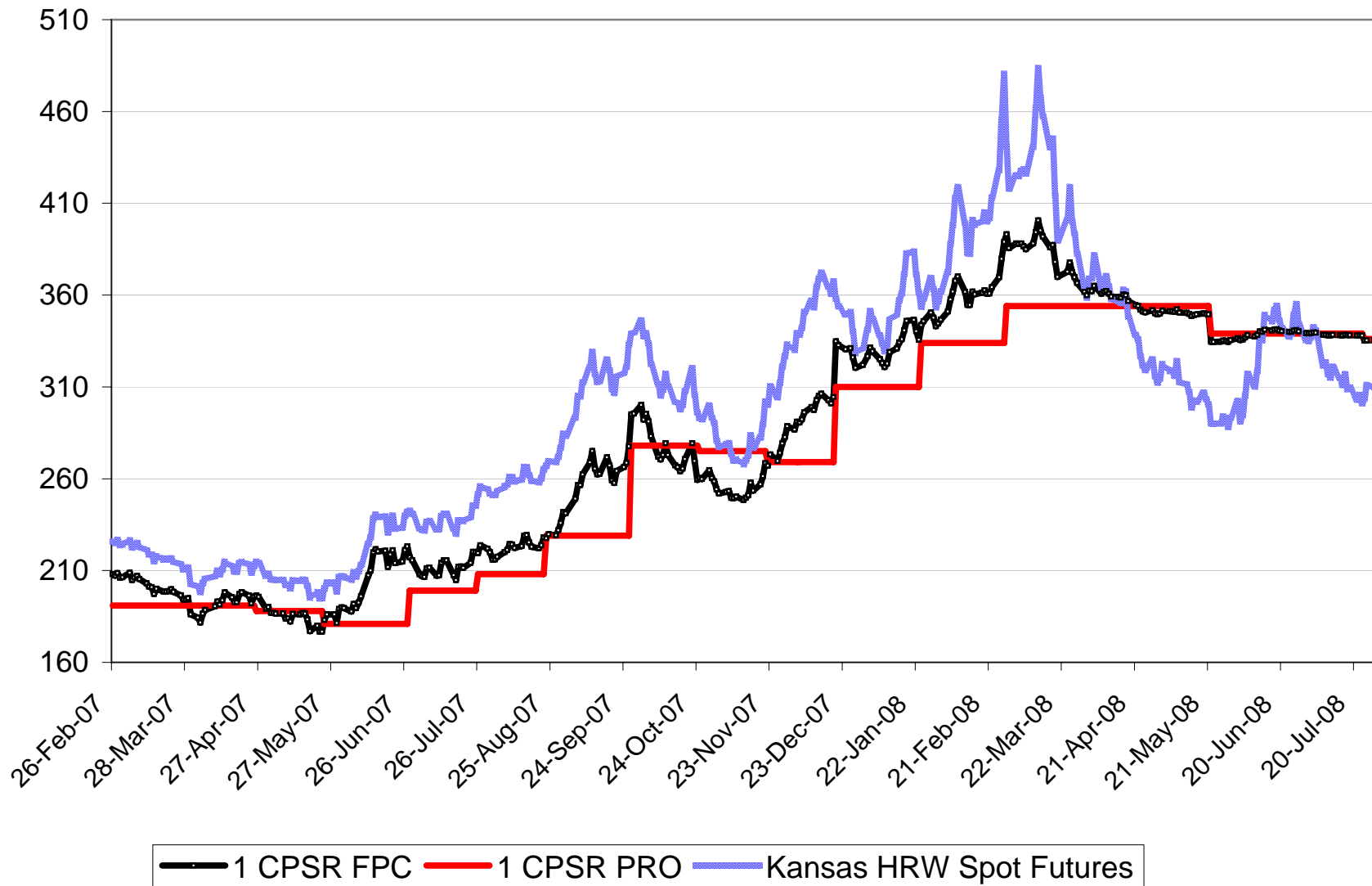
2007-08 No.1 CWES Fixed Price

\$Cdn/tonne



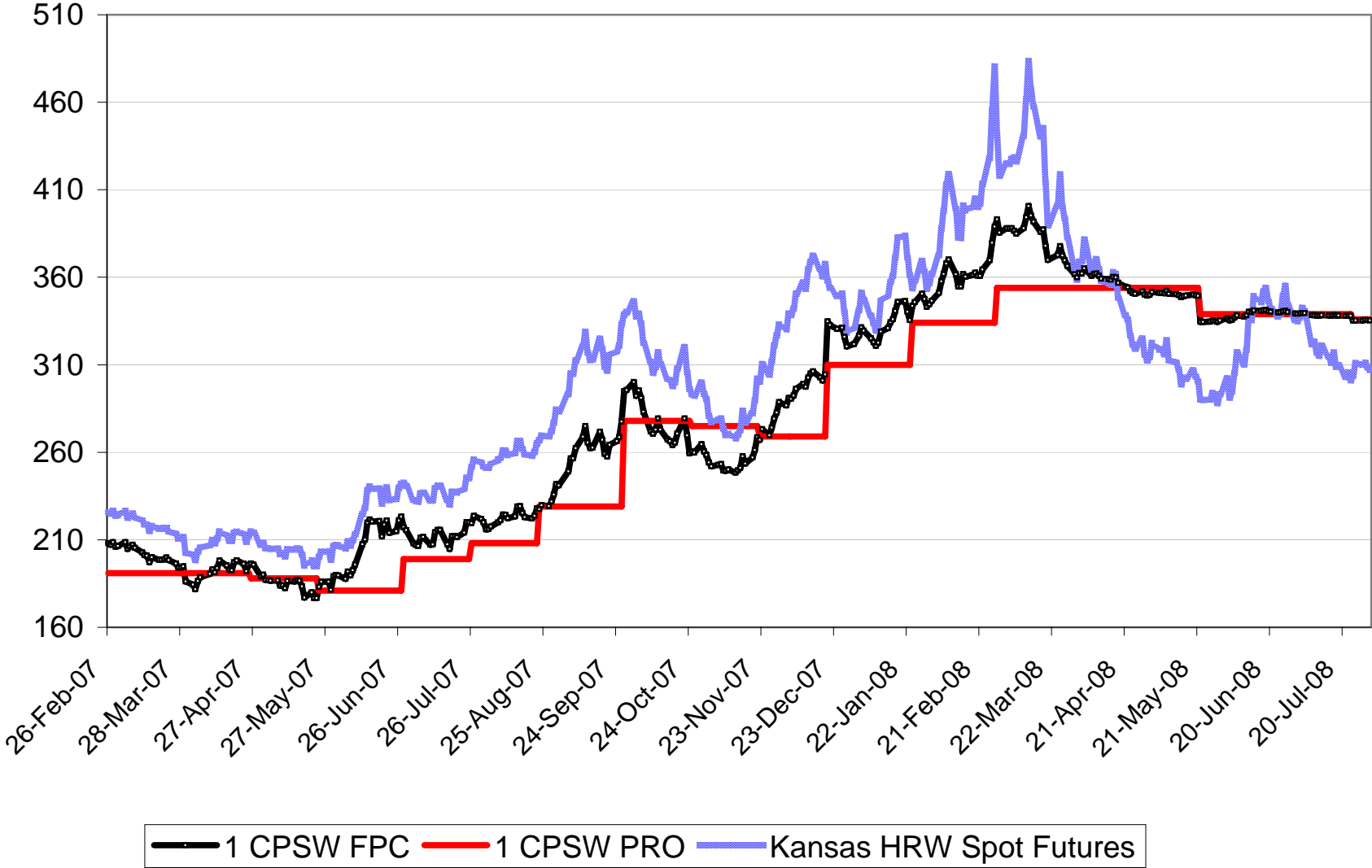
2007-08 No. 1 CPSR Fixed Price

\$Cdn/tonne



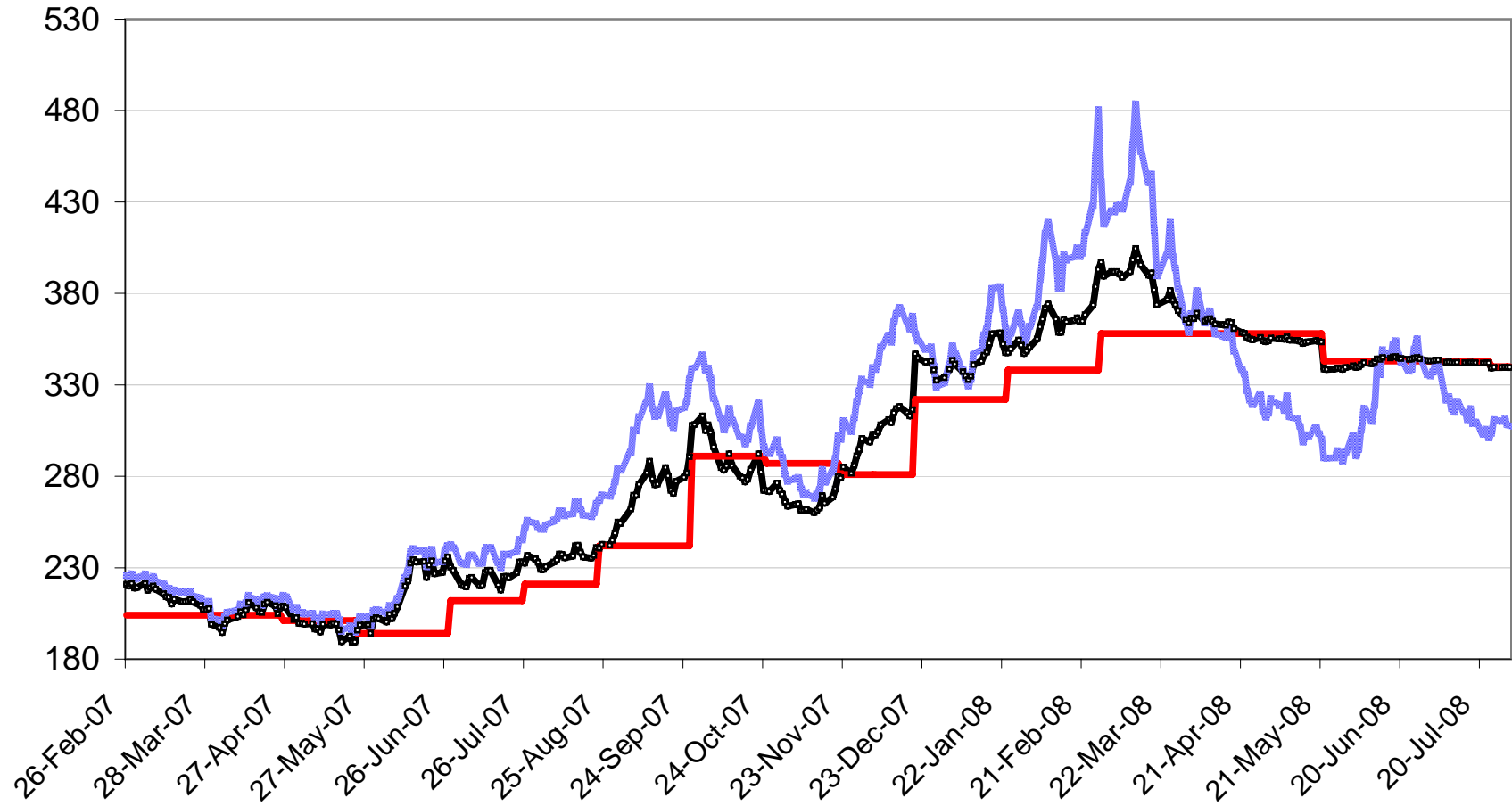
2007-08 No. 1 CPSW Fixed Price

\$Cdn/tonne



2007-08 No. 1 CWRW Select 11.5 Fixed Price

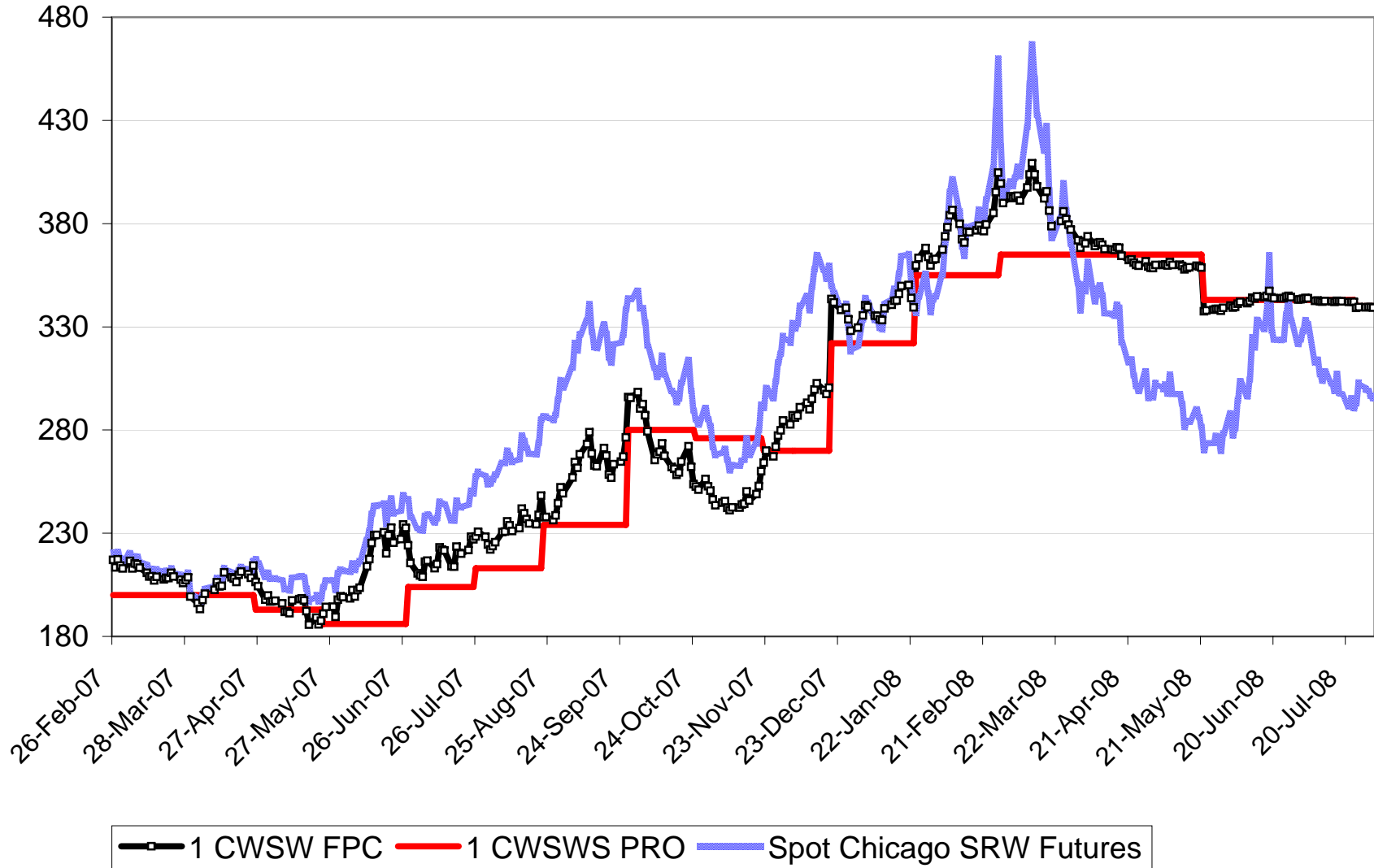
\$Cdn/tonne



— 1 CWRW Select 11.5 FPC — 1 CWRW Select 11.5 PRO — Spot Kansas HRW Futures

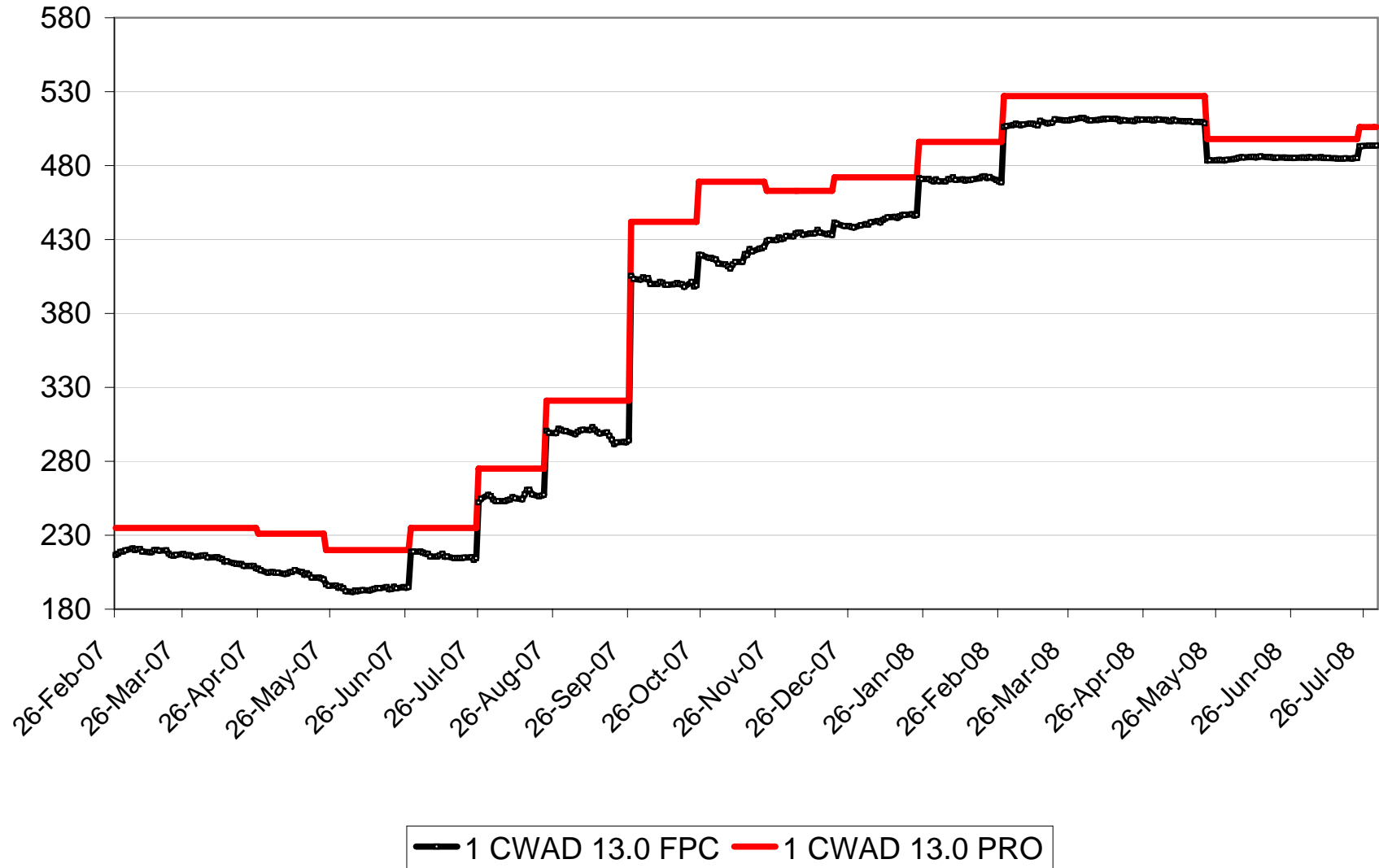
2007-08 No. 1 CWSWS Fixed Price

\$Cdn/tonne



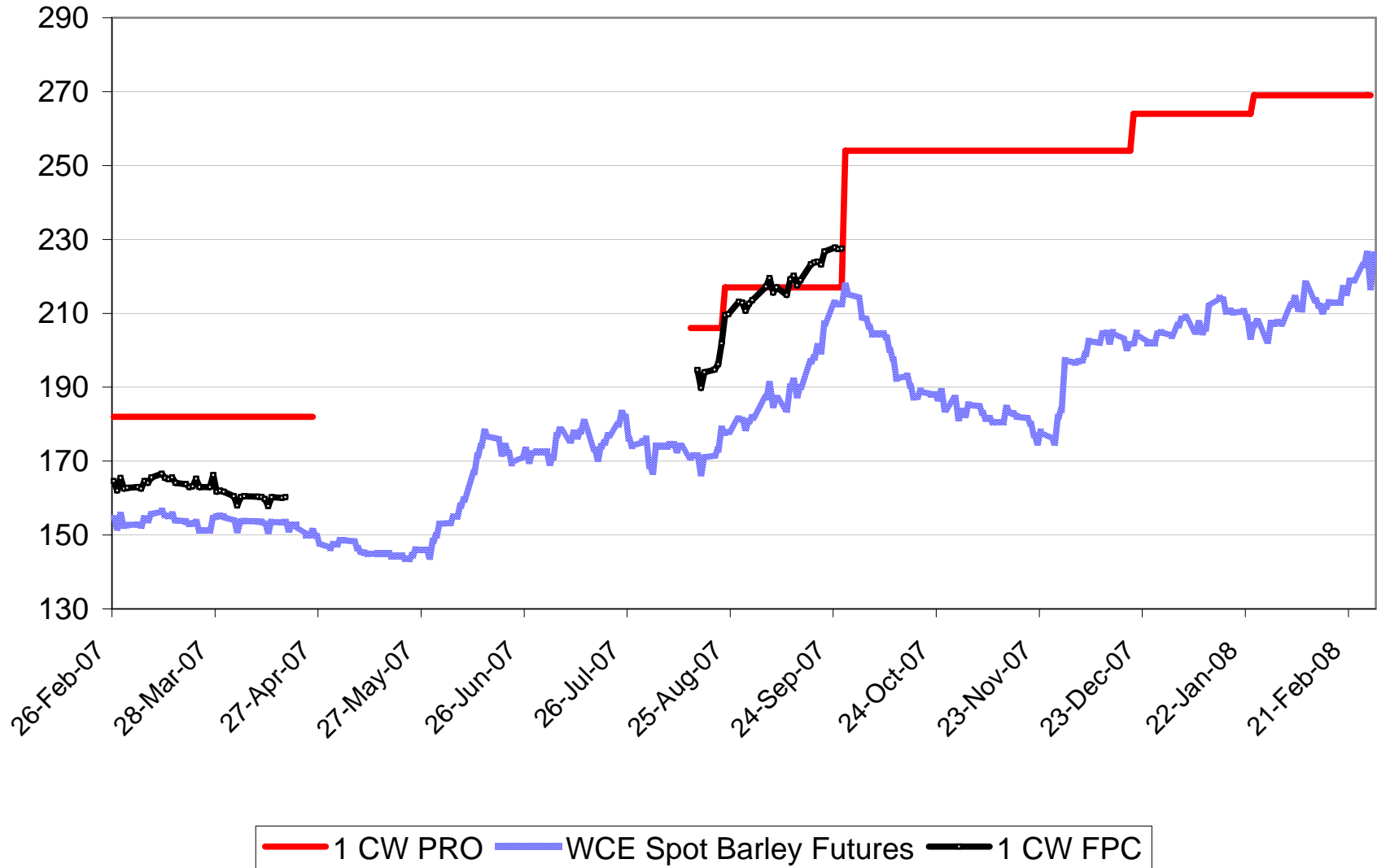
2007-08 No. 1 CWAD 13.0 Fixed Price

\$Cdn/tonne



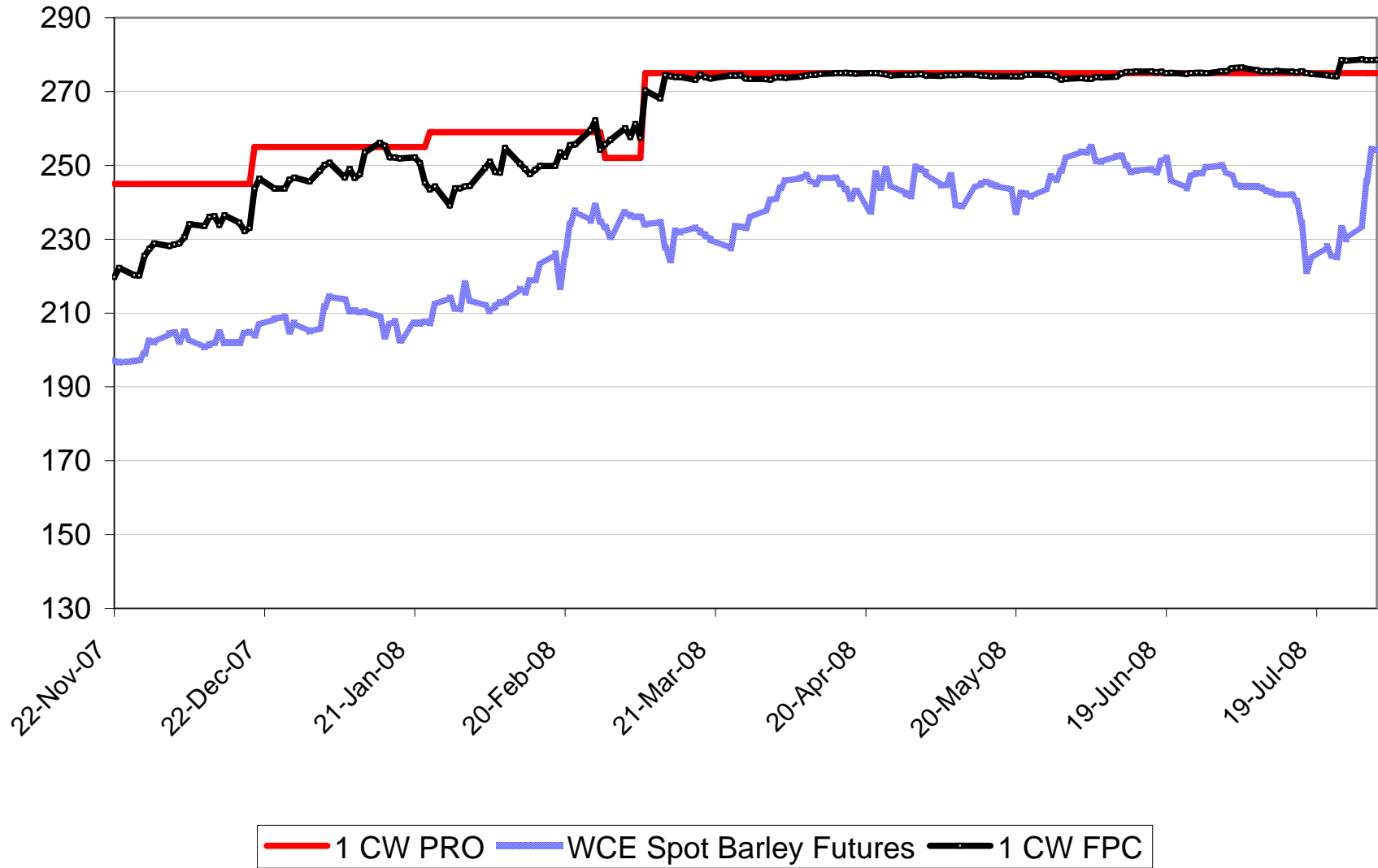
2007-08 No. 1 CW Barley Fixed Price Pool A

\$Cdn/tonne



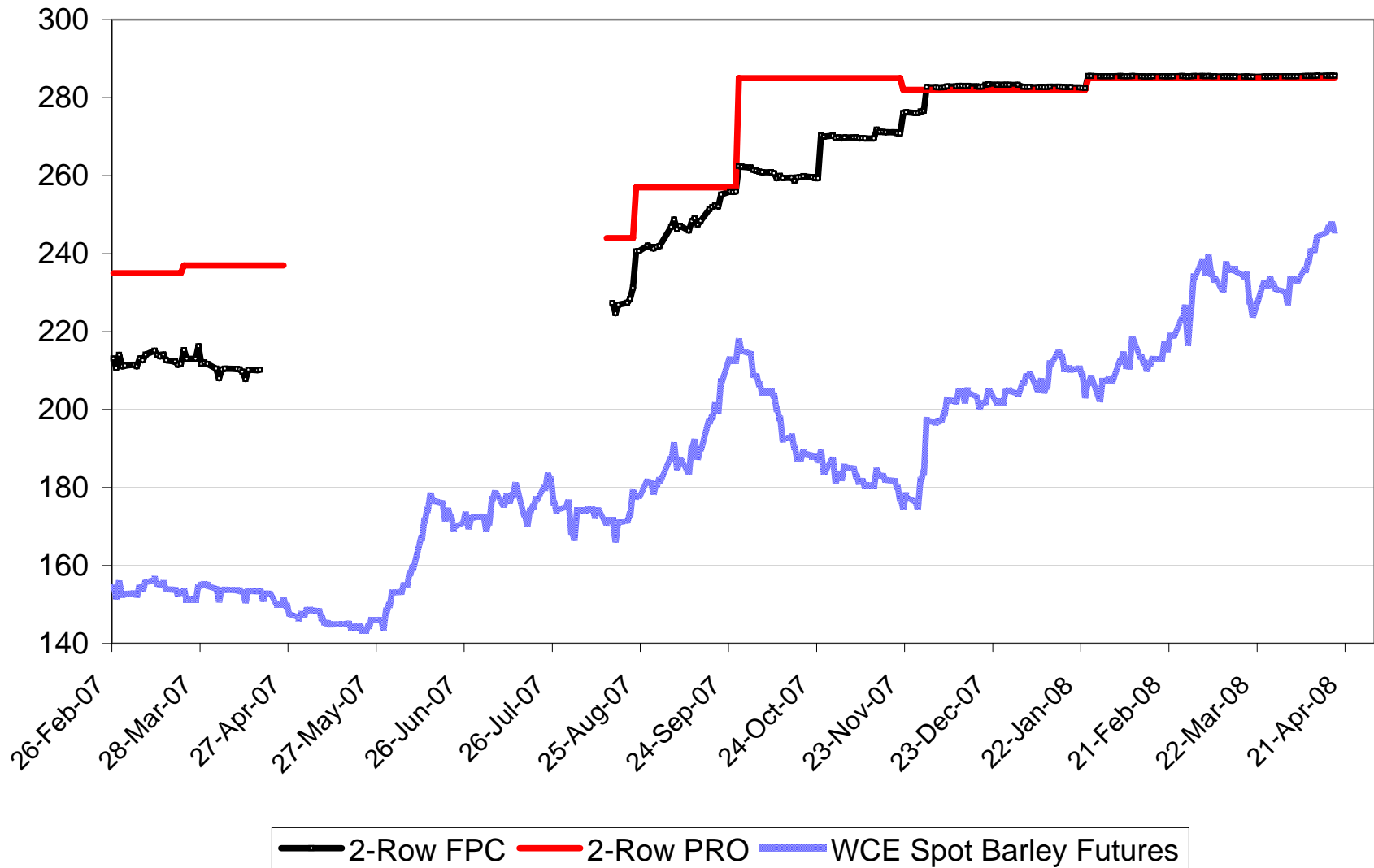
2007-08 No. 1 CW Barley Fixed Price Pool B

\$Cdn/tonne



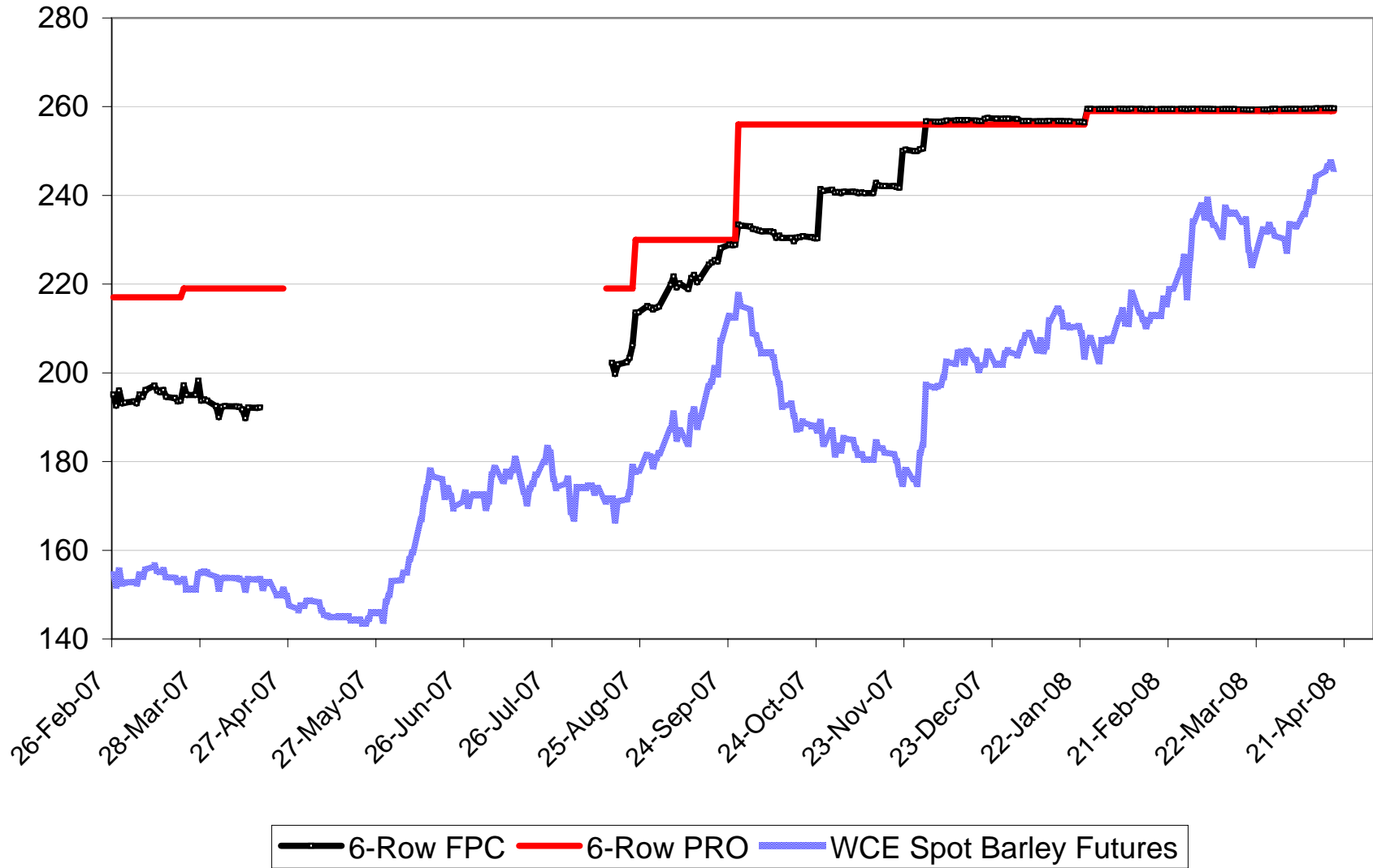
2007-08 Std. Sel. Two-Row Fixed Price

\$Cdn/tonne



2007-08 Std Sel Six-Row Fixed Price

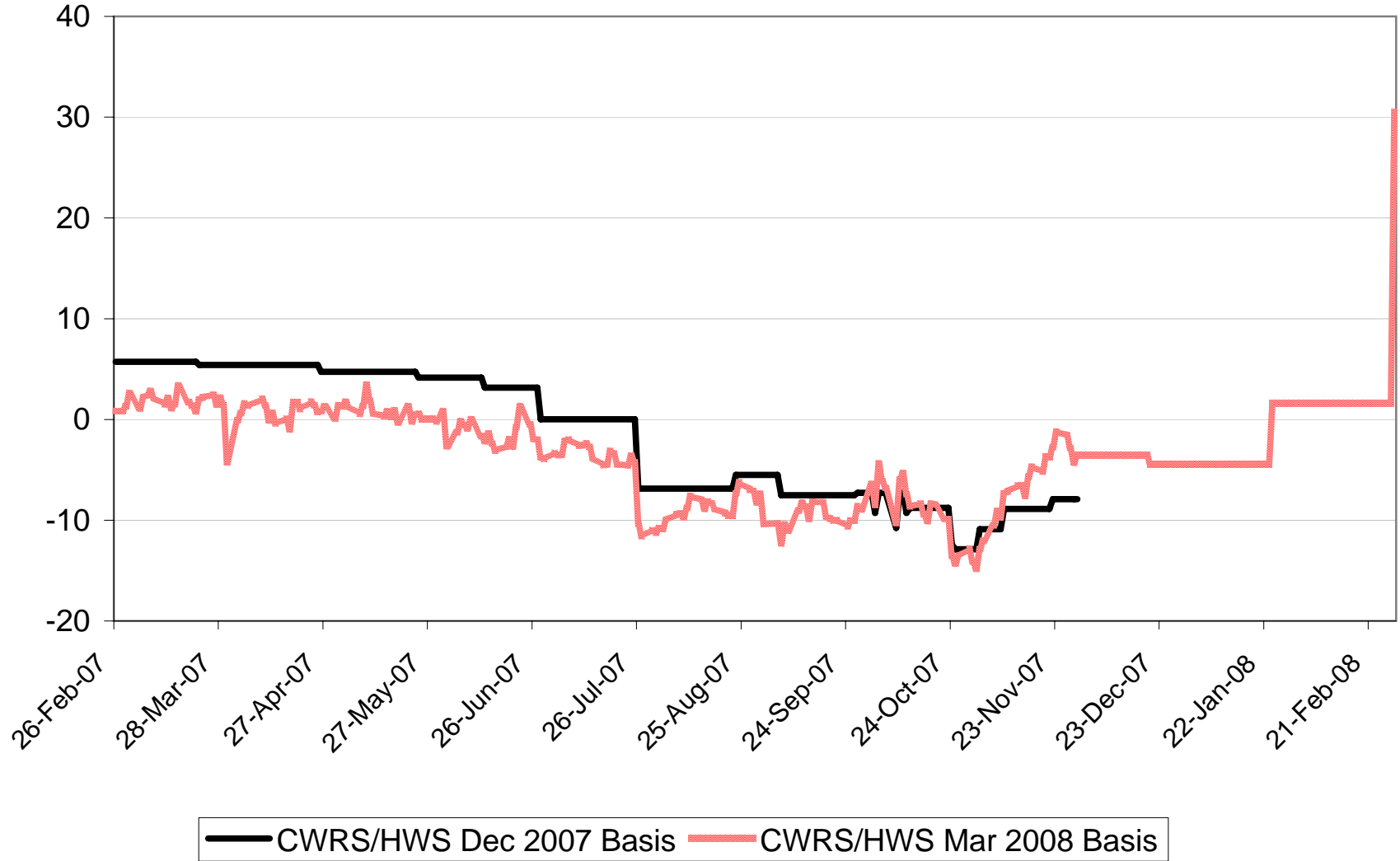
\$Cdn/tonne



2007-08 No. 1 CWRS/HWS 13.5 Basis

\$Cdn/tonne

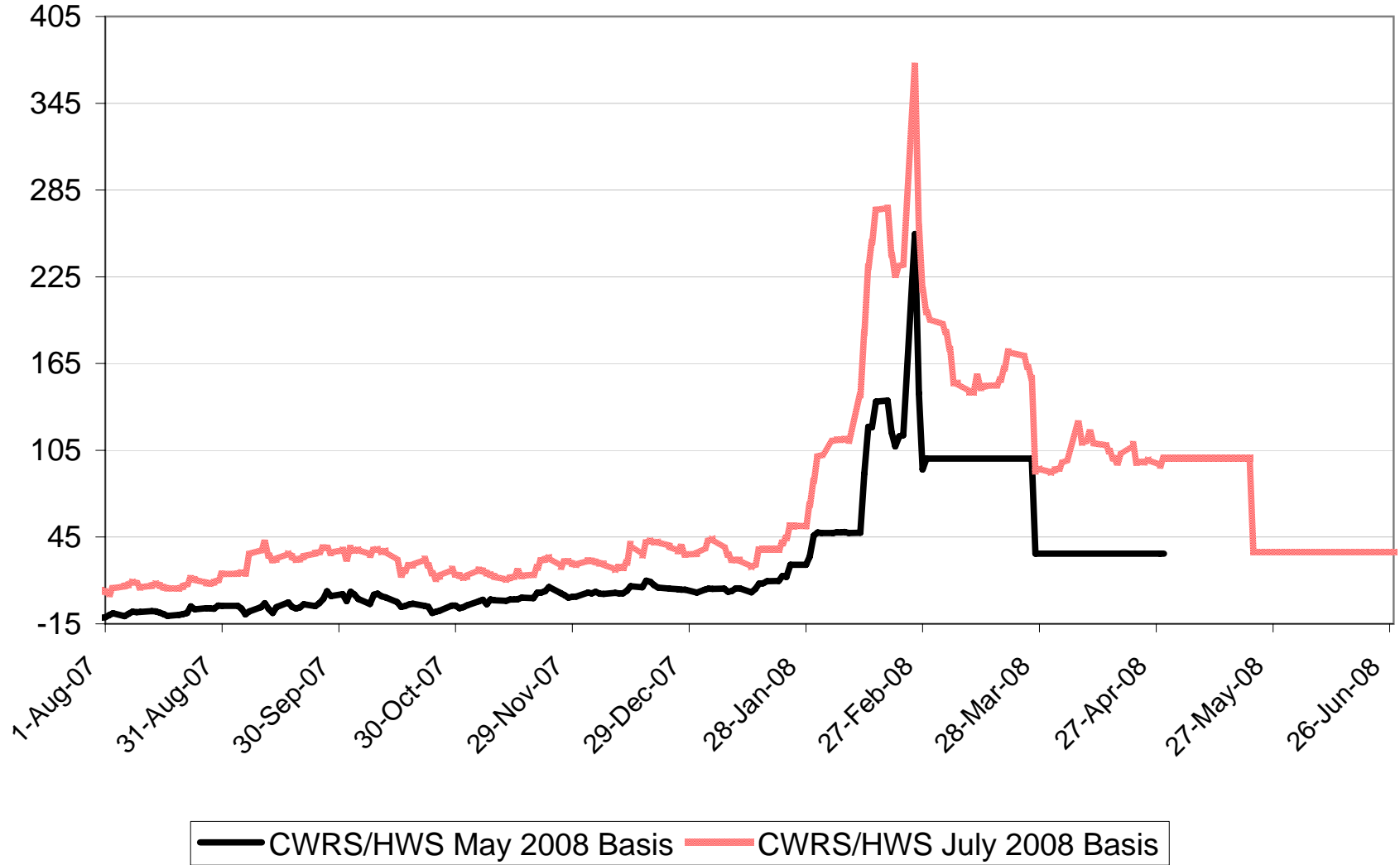
\$ per tonne basis Minn HRS Futures



2007-08 No. 1 CWRs/HWS 13.5 Basis

\$Cdn/tonne

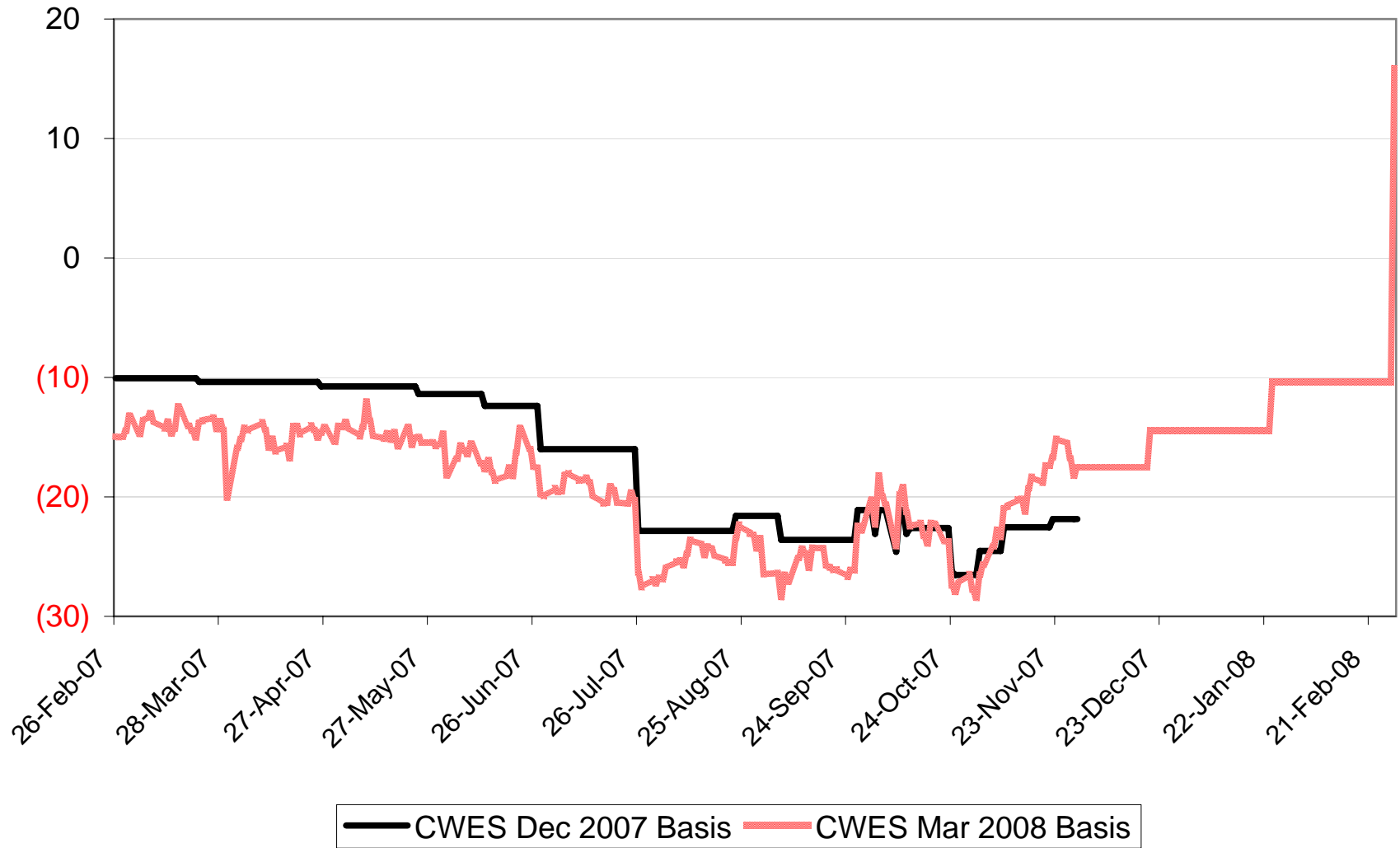
\$ per tonne basis Minn HRS Futures



2007-08 No. 1 CWES Basis

\$ per tonne basis Minn HRS Futures

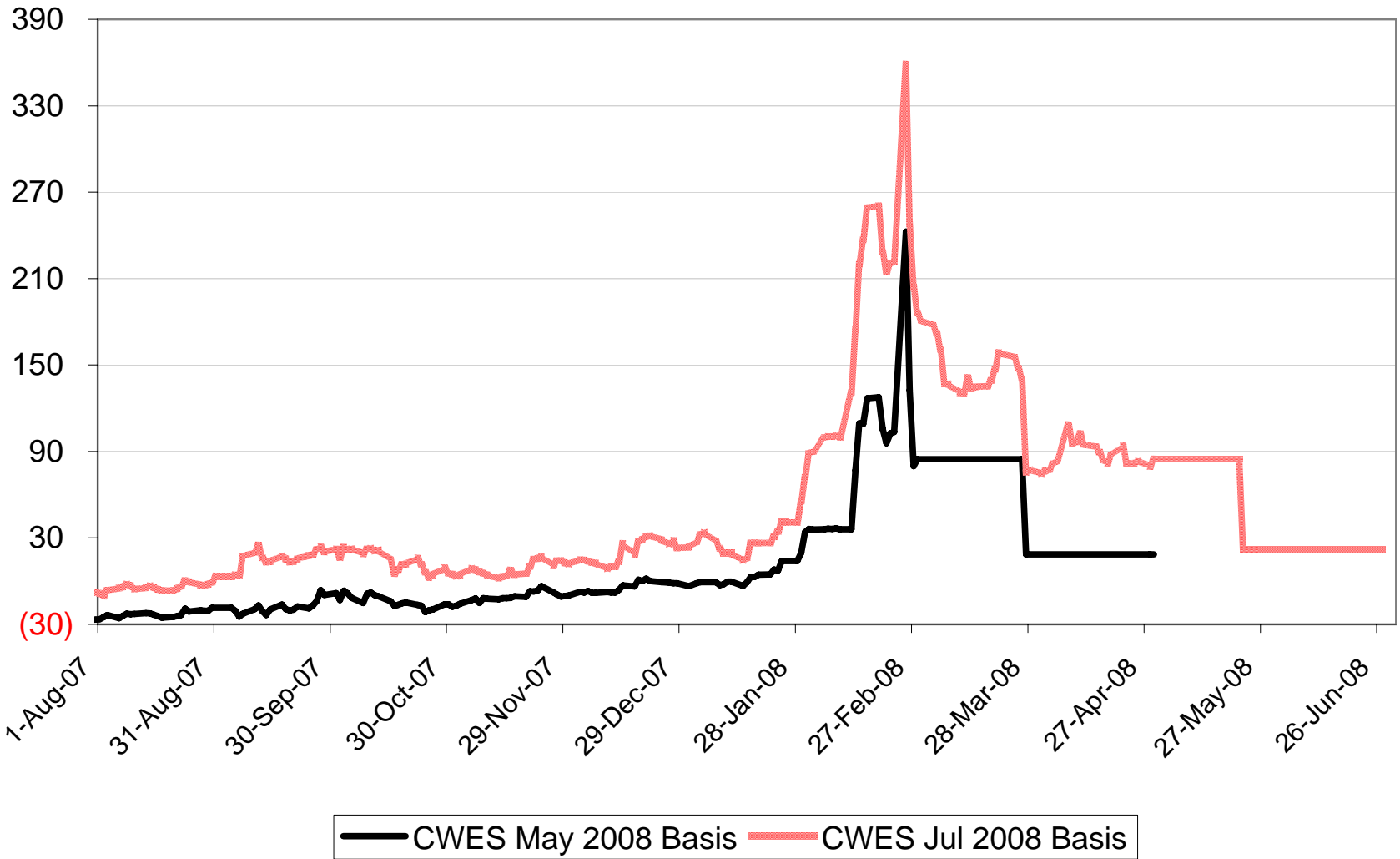
\$Cdn/tonne



2007-08 No. 1 CWES Basis

\$ per tonne basis Minn HRS Futures

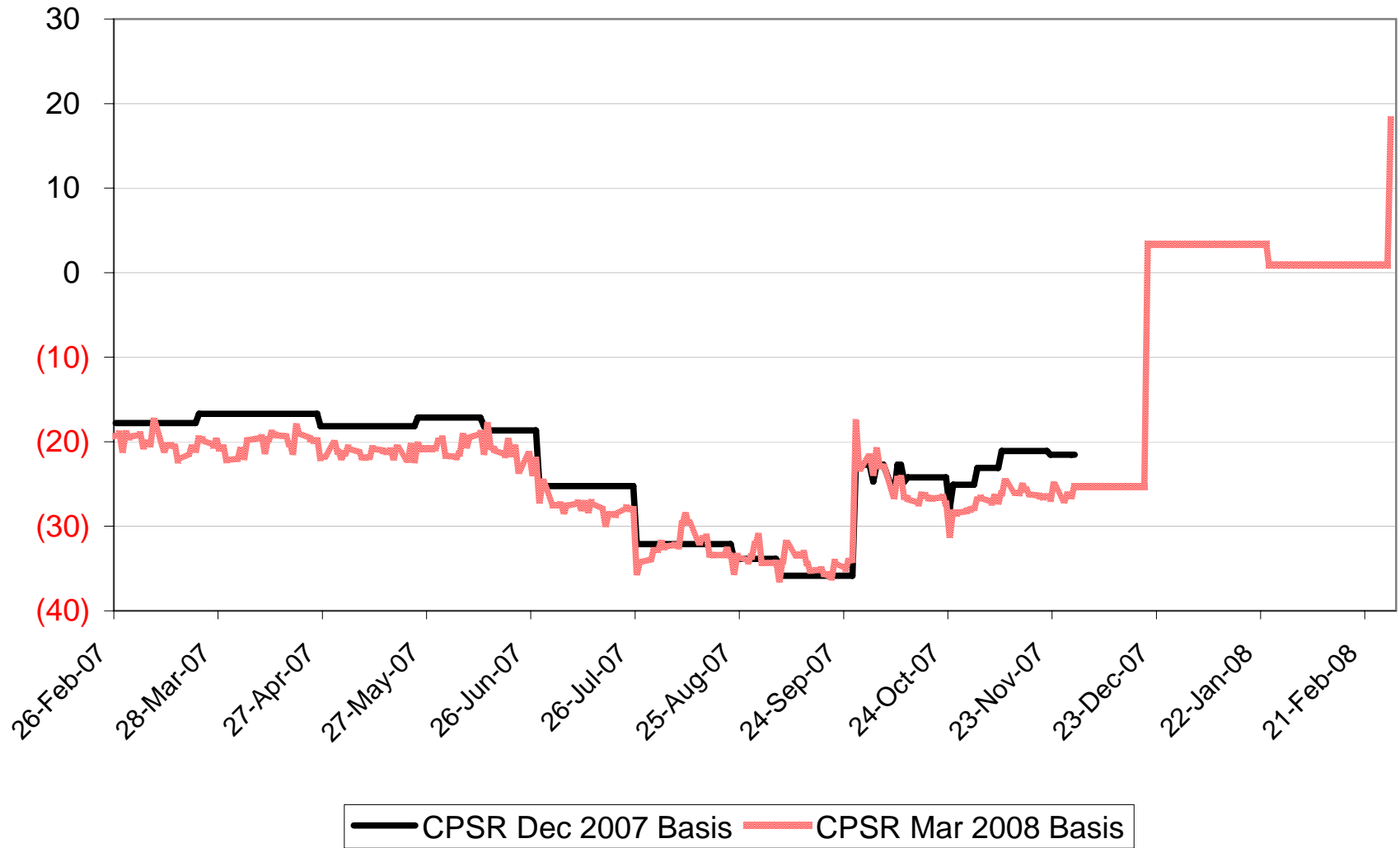
\$Cdn/tonne



2007-08 No. 1 CPSR Basis

\$ per tonne basis Kansas HRW Futures

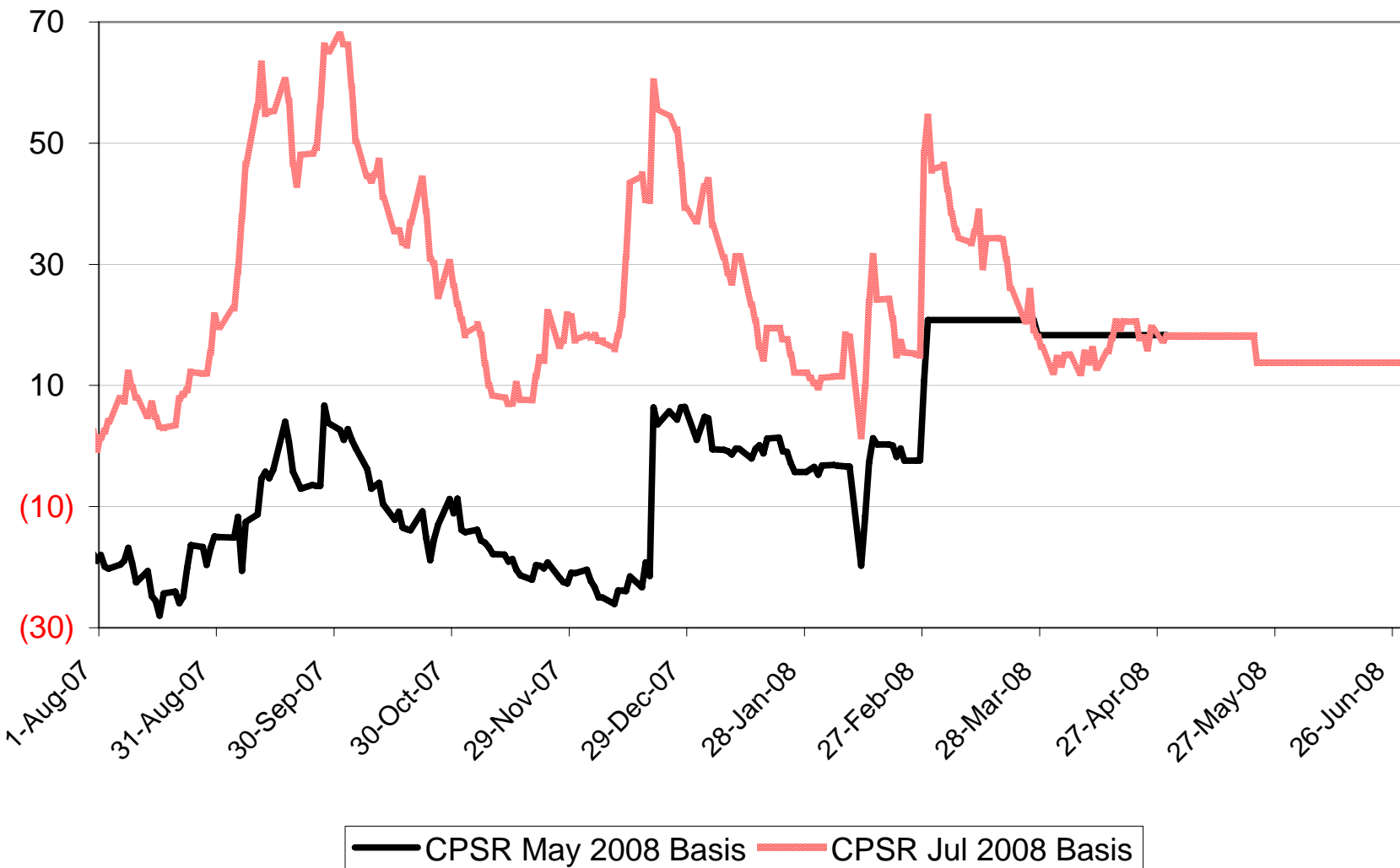
\$Cdn/tonne



2007-08 No. 1 CPSR Basis

\$ per tonne basis Kansas HRW Futures

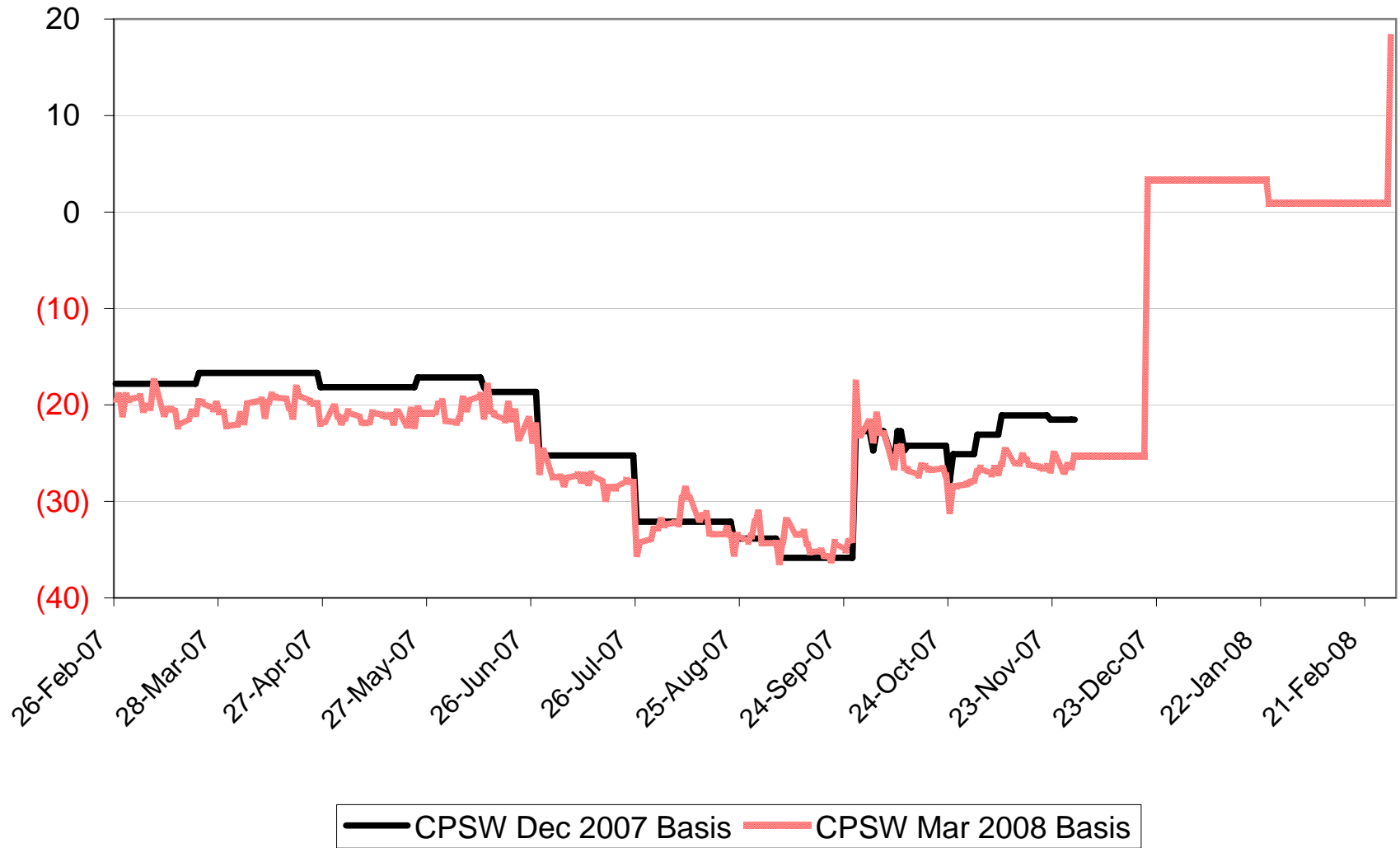
\$Cdn/tonne



2007-08 No. 1 CPSW Basis

\$ per tonne basis Kansas HRW Futures

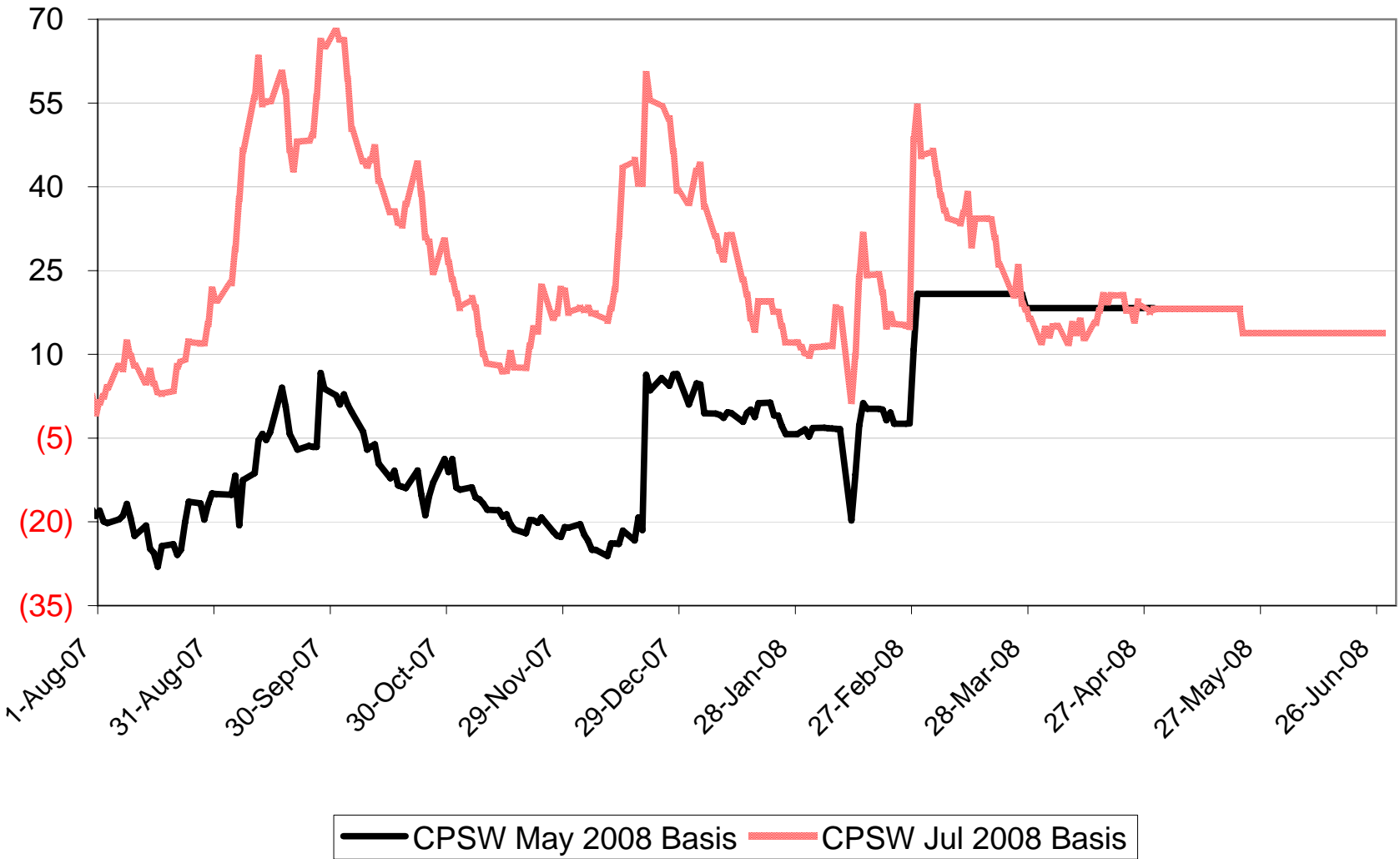
\$Cdn/tonne



2007-08 No. 1 CPSW Basis

\$ per tonne basis Kansas HRW Futures

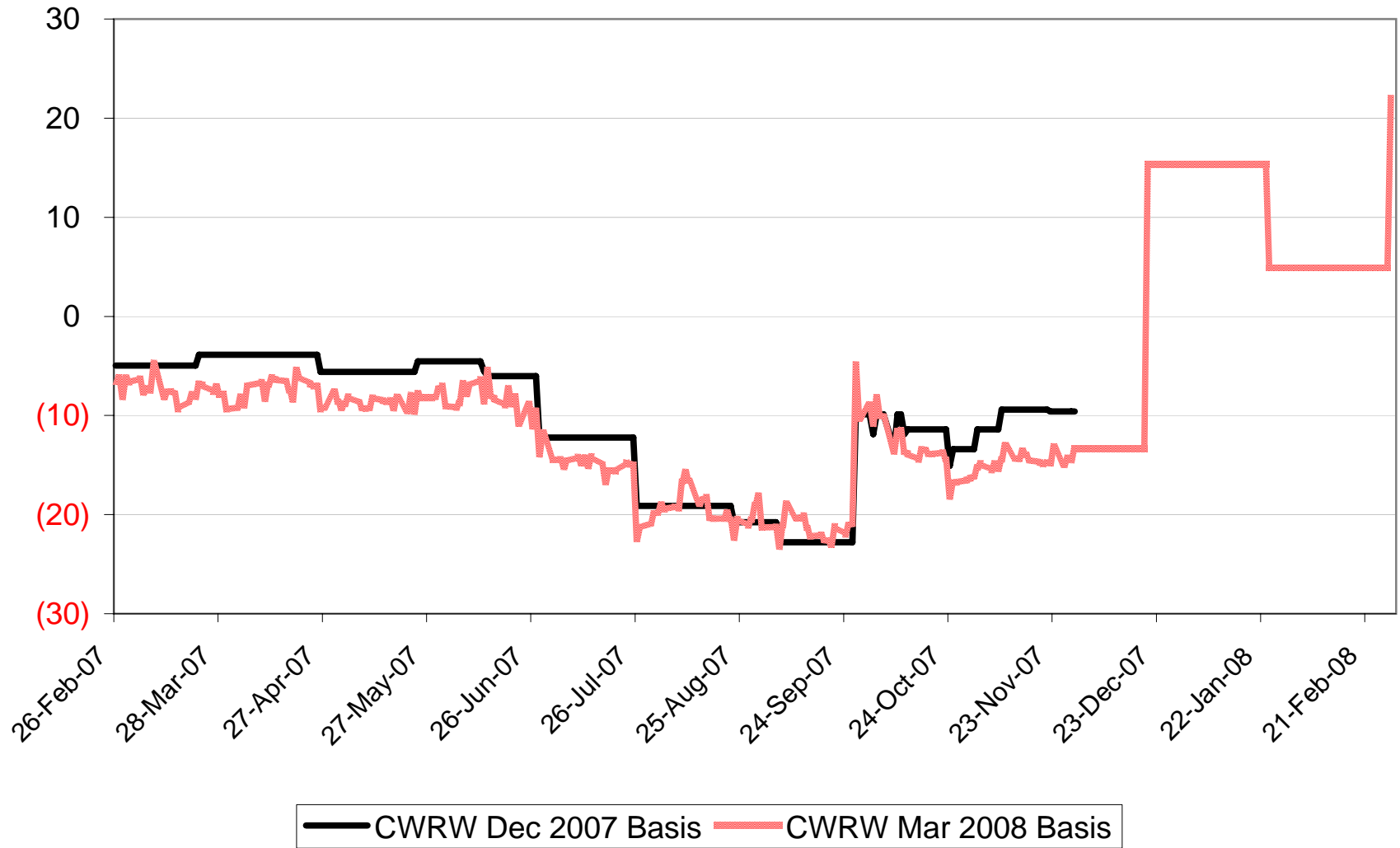
\$Cdn/tonne



2007-08 No. 1 CWRW Select 11.5 Basis

\$ per tonne basis Kansas HRW Futures

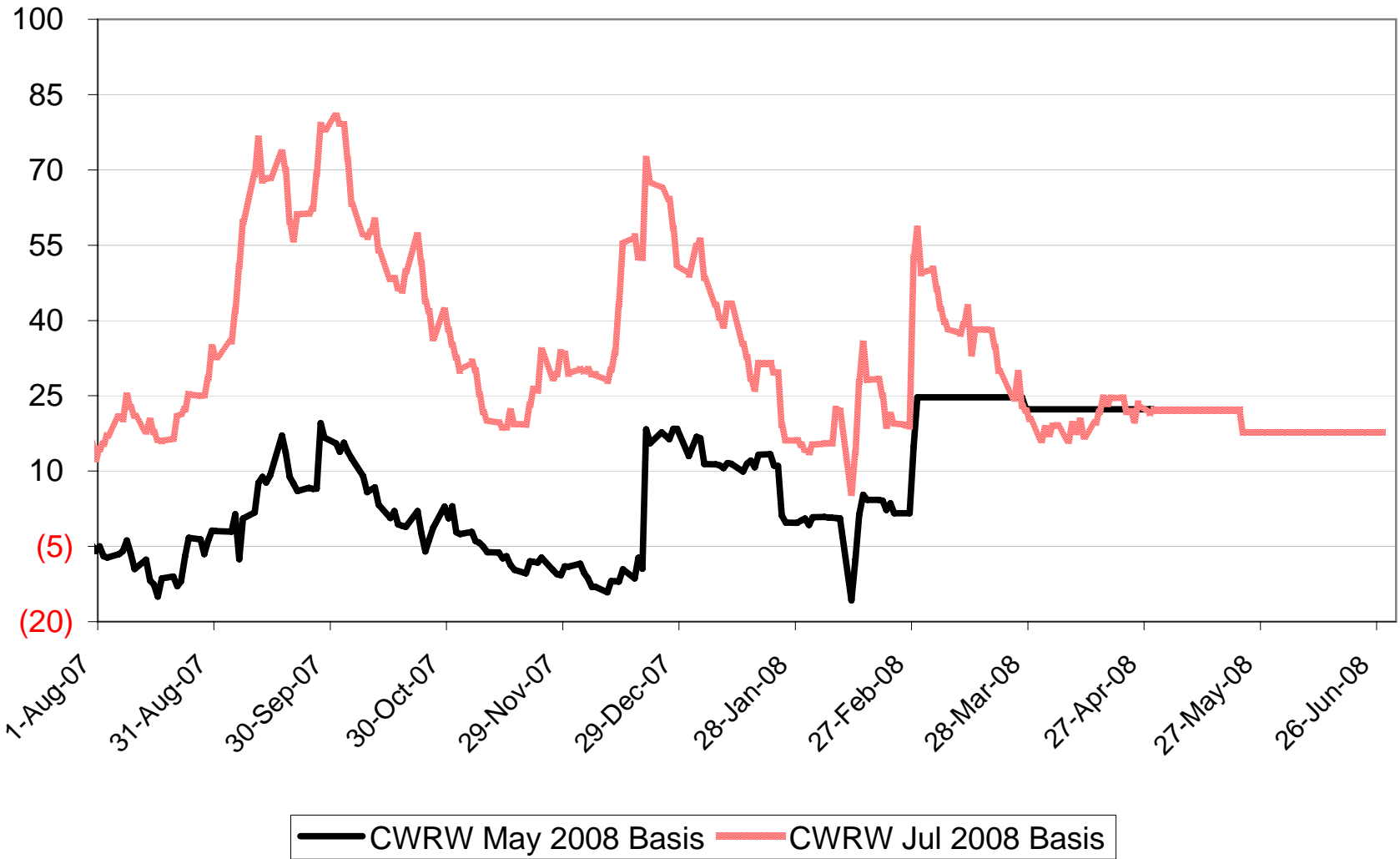
\$Cdn/tonne



2007-08 No. 1 CWRW Select 11.5 Basis

\$ per tonne basis Kansas HRW Futures

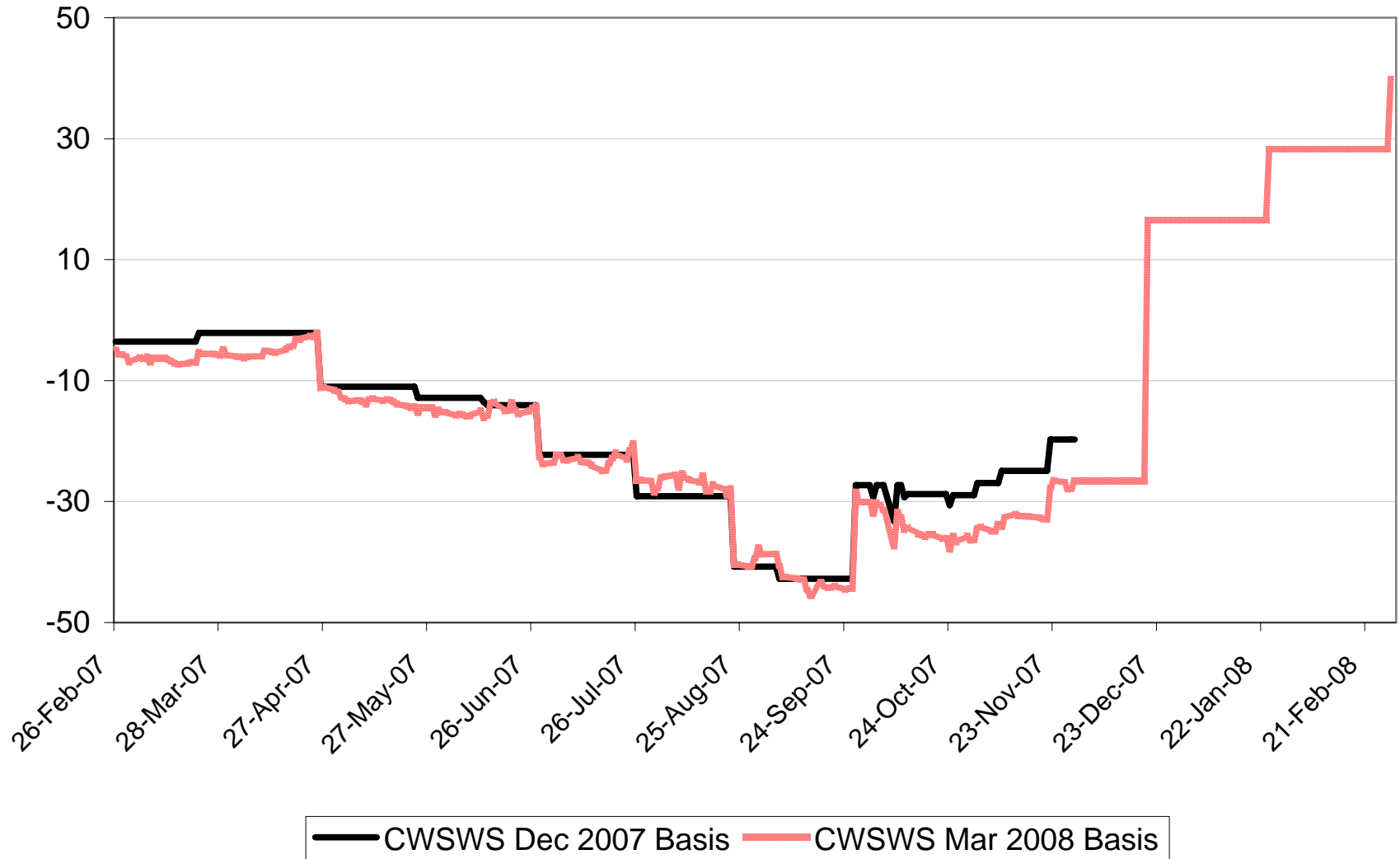
\$Cdn/tonne



2007-08 No. 1 CWSWS Basis Levels

\$ per tonne basis Chicago SRW Futures

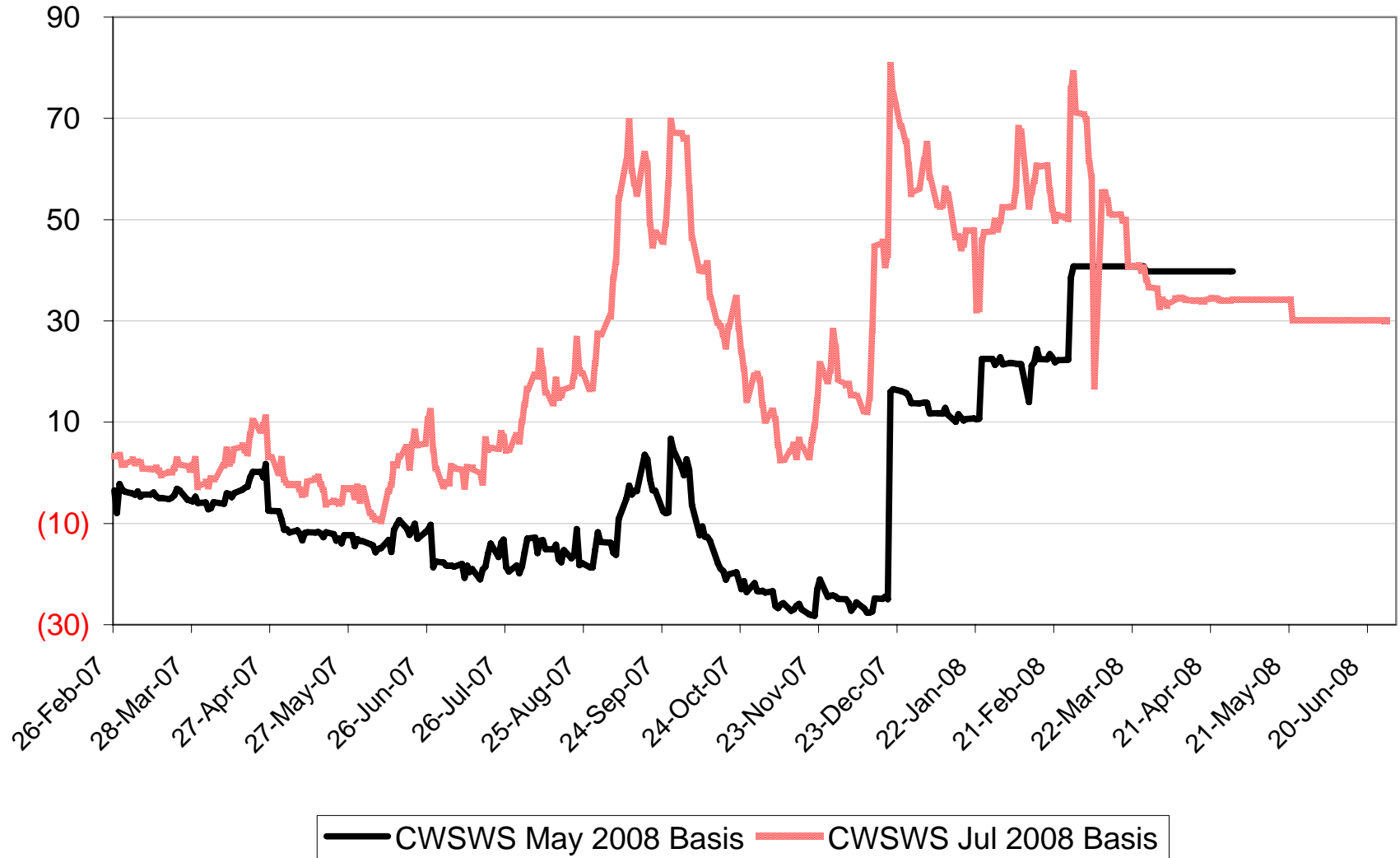
\$Cdn/tonne



2007-08 No. 1 CWSWS Basis Levels

\$ per tonne basis Chicago SRW Futures

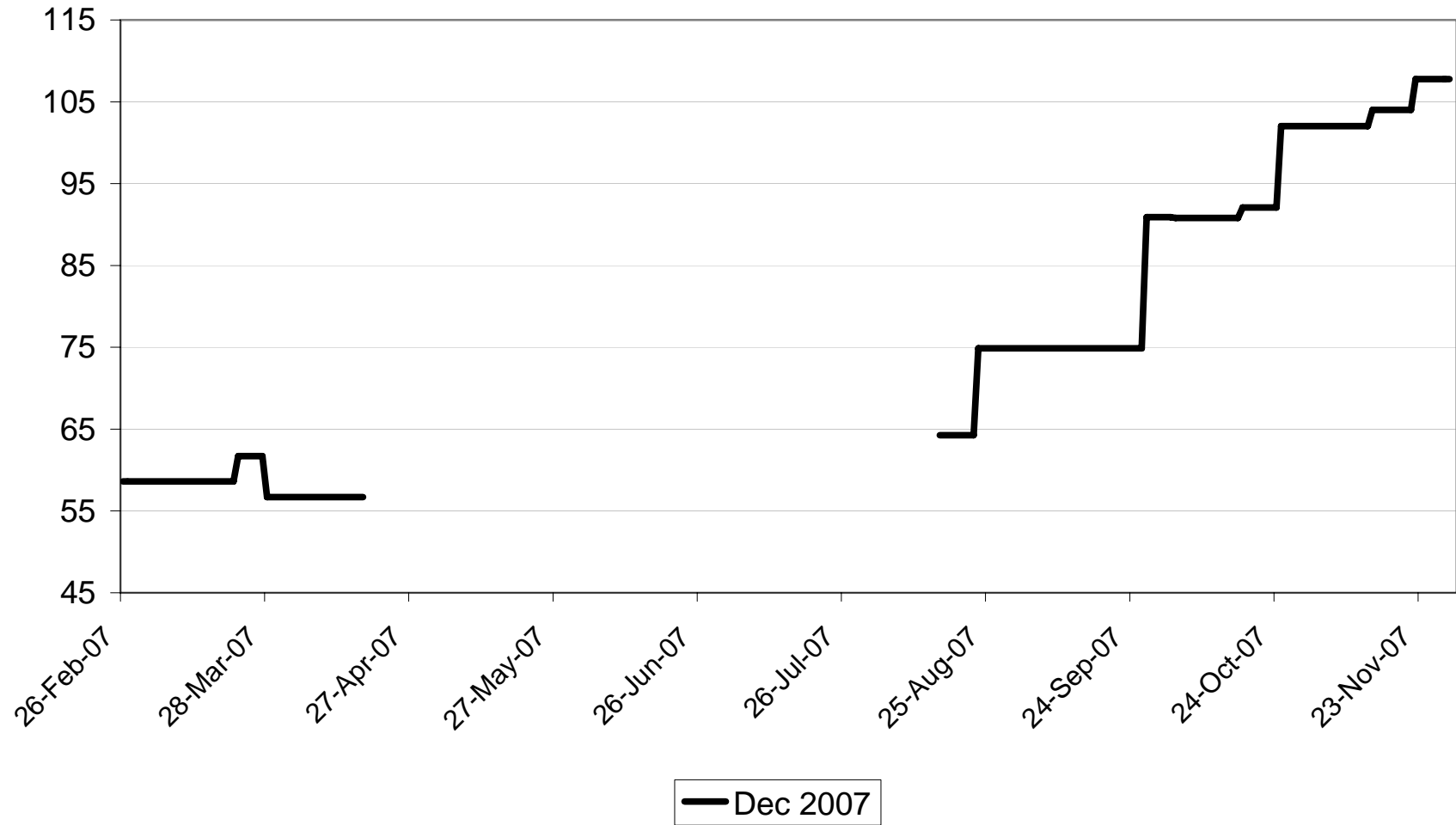
\$Cdn/tonne



2007-08 Std Sel Two-Row Basis Levels

\$ per tonne basis WCE W. Barley Futures

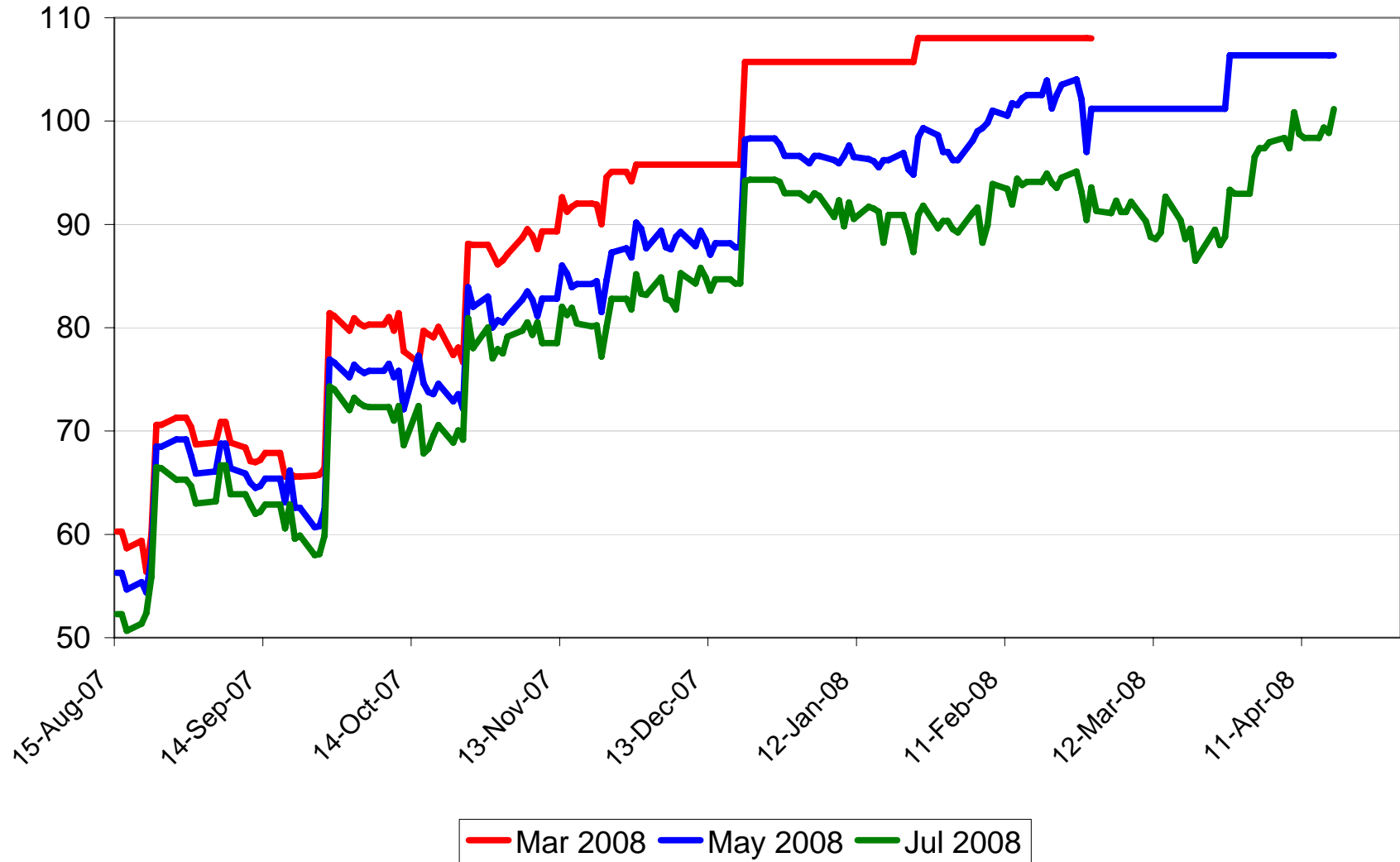
\$Cdn/tonne



2007-08 Std Sel Two-Row Basis Levels

\$ per tonne basis WCE W. Barley Futures

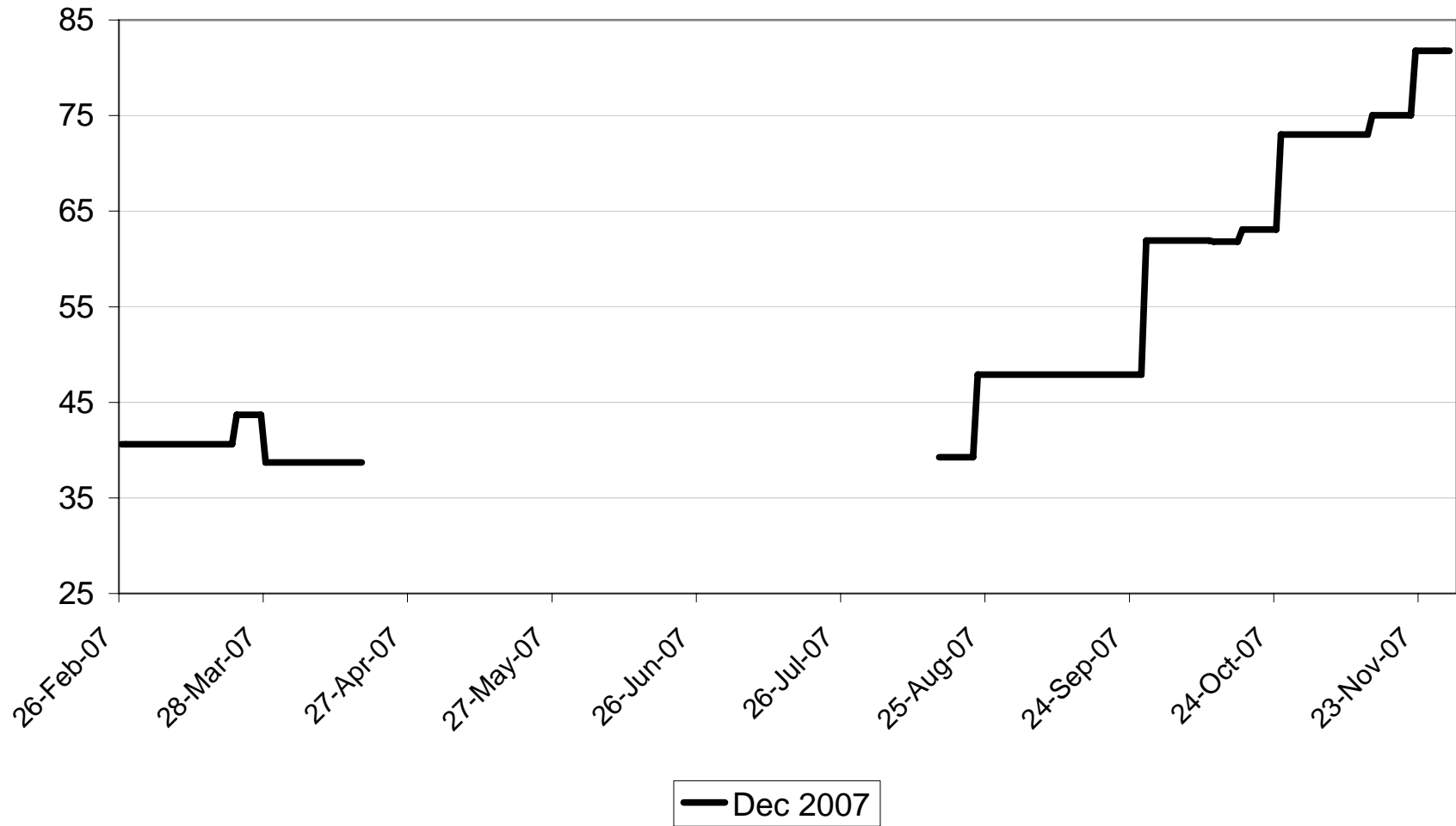
\$Cdn/tonne



2007-08 Std Sel Six-Row Basis Levels

\$ per tonne above WCE W. Barley Futures

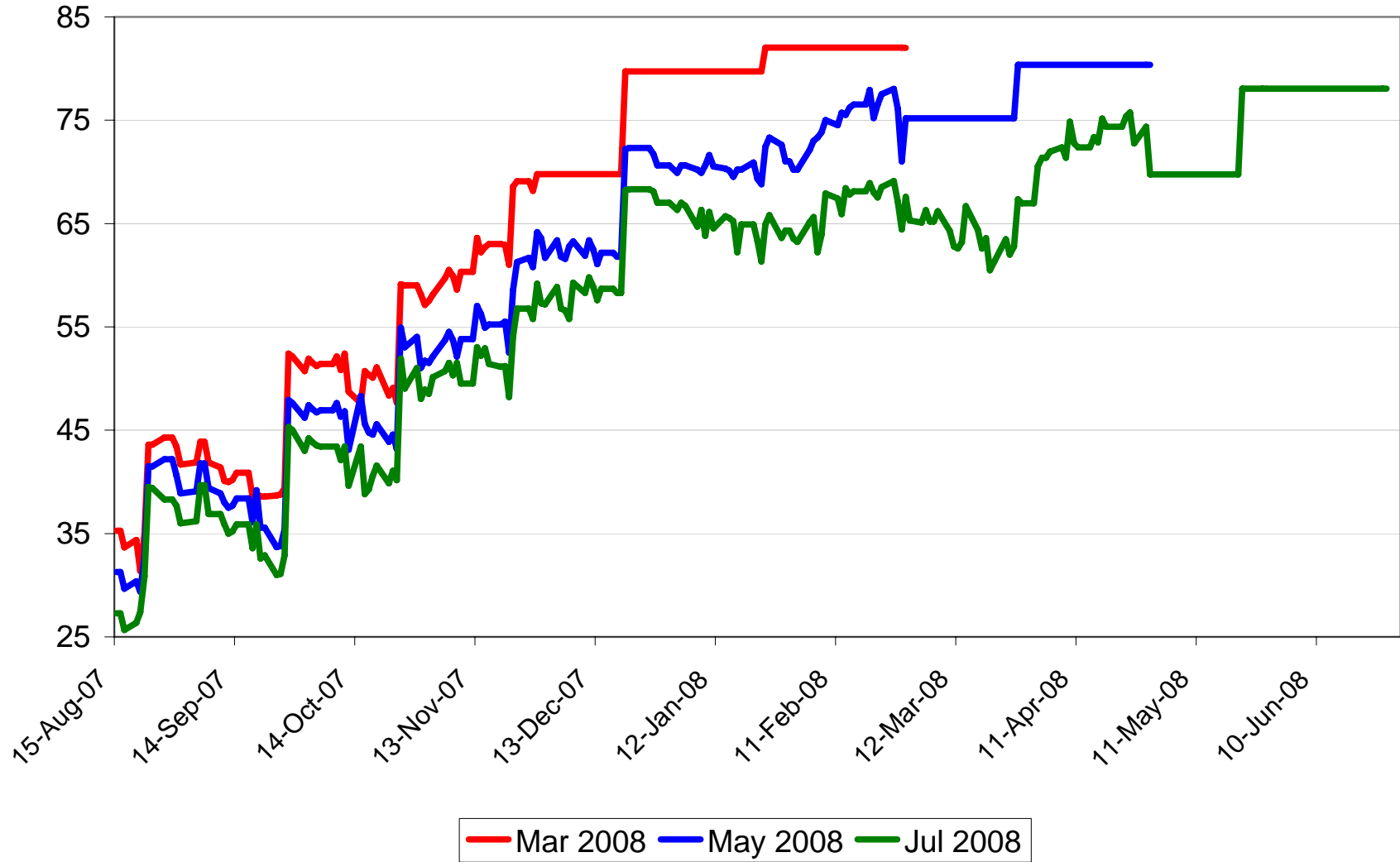
\$Cdn/tonne



2007-08 Std Sel Six-Row Basis Levels

\$ per tonne above WCE W. Barley Futures

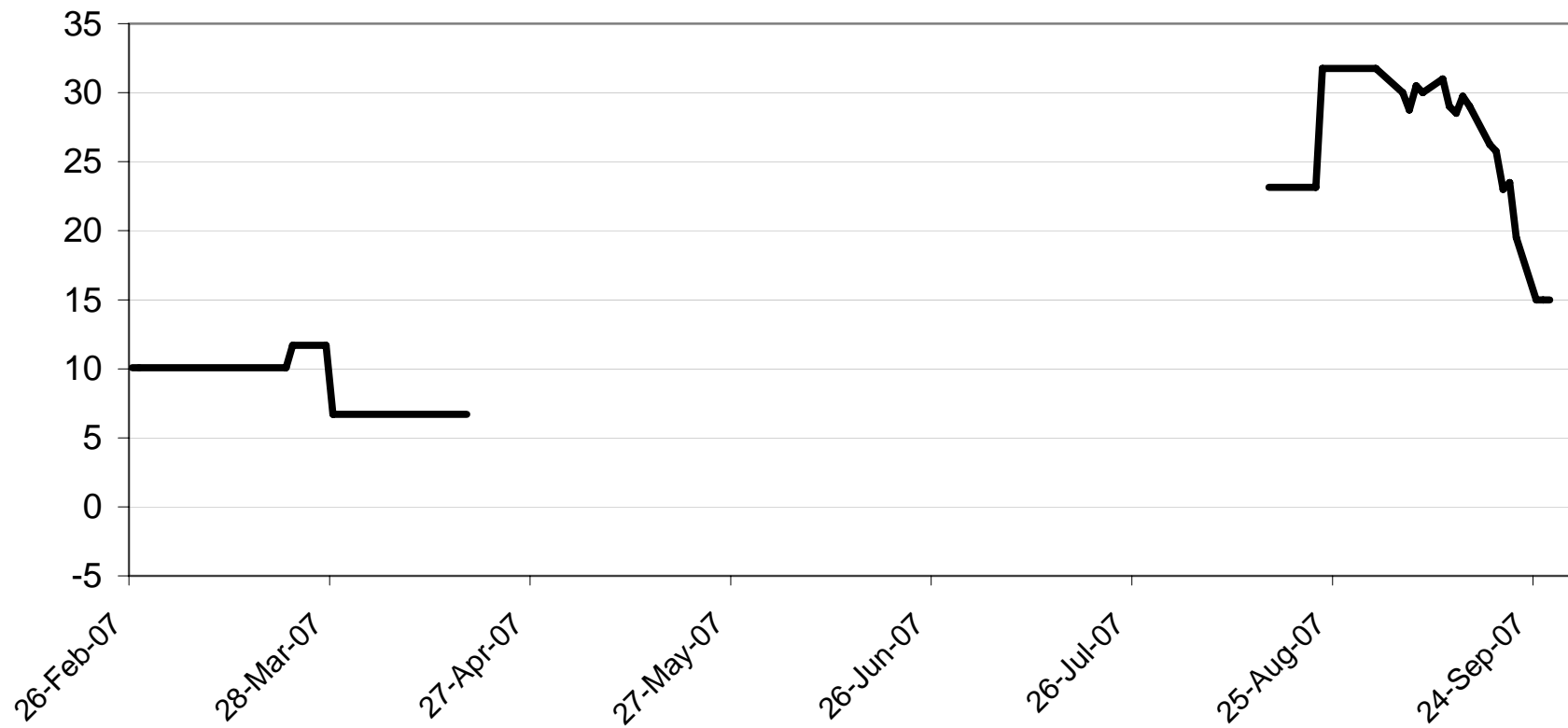
\$Cdn/tonne



2007-08 Feed Barley Basis Levels - Pool A

\$ per tonne basis WCE W. Barley Futures

\$Cdn/tonne

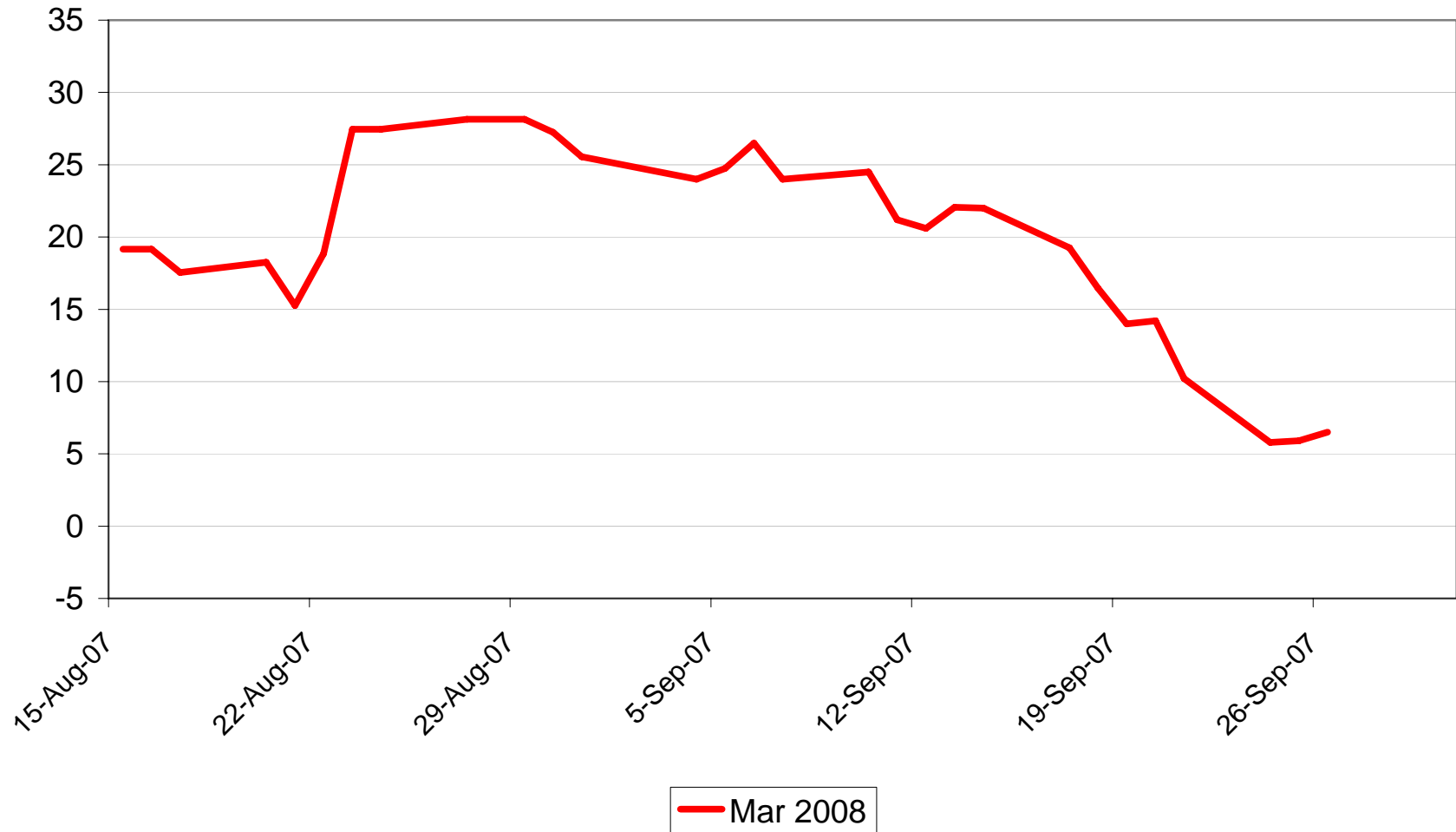


— Dec 2007

2007-08 Feed Barley Basis Levels - Pool A

\$ per tonne basis WCE W. Barley Futures

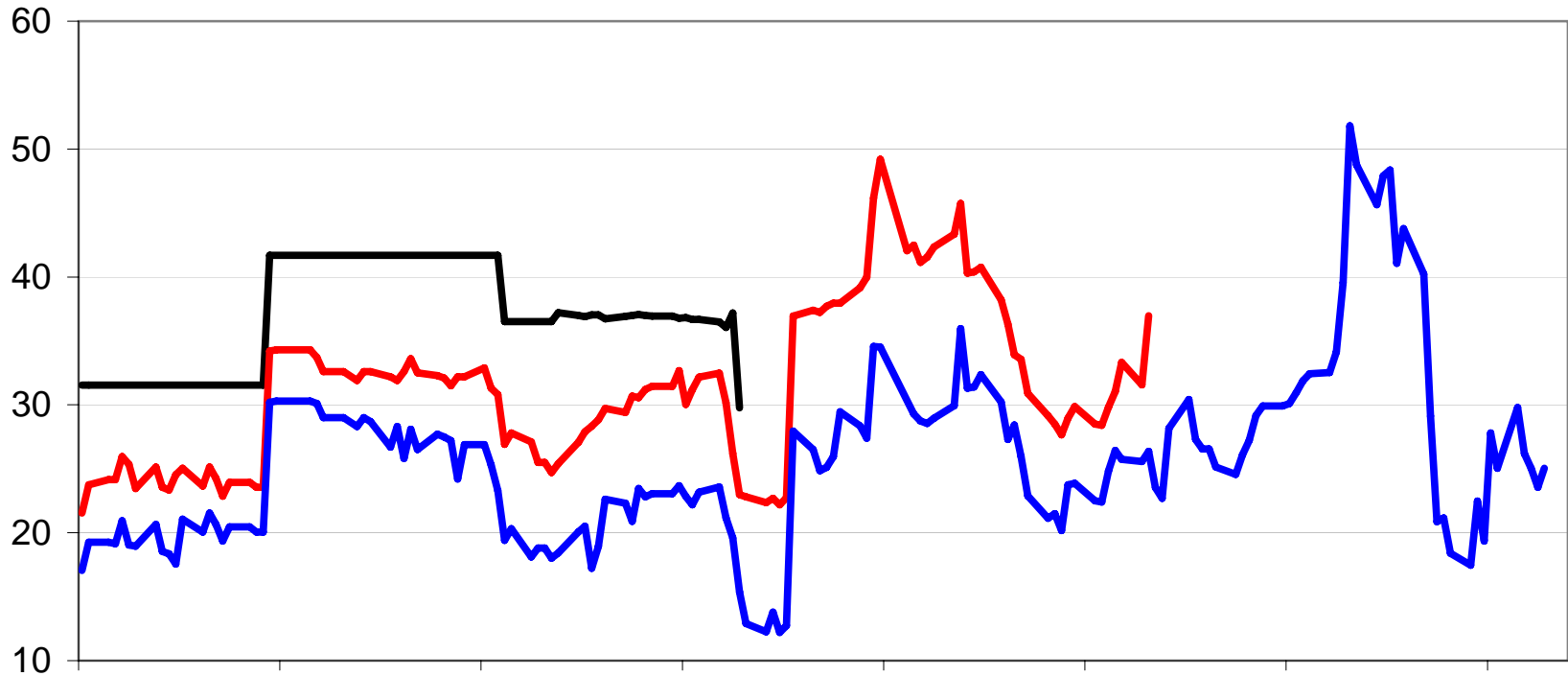
\$Cdn/tonne



2007-08 Feed Barley Basis Levels - Pool B

\$ per tonne basis WCE W. Barley Futures

\$Cdn/tonne



— Mar 2008 — May 2008 — Jul 2008